

The impact of integrating CT Image of left atrium and smart touch technology In electroanatomical CARTO mapping system on recurrence of atrial fibrillation

Ibrahim Marai MD, Mahmoud Suleiman MD, Lior Gepstein MD PhD, and Monther Boulos MD.

The division of Pacing and Electrophysiology. Rambam Health Care Campus and

Bruce Rappaport Faculty of Medicine, Haifa, Israel •

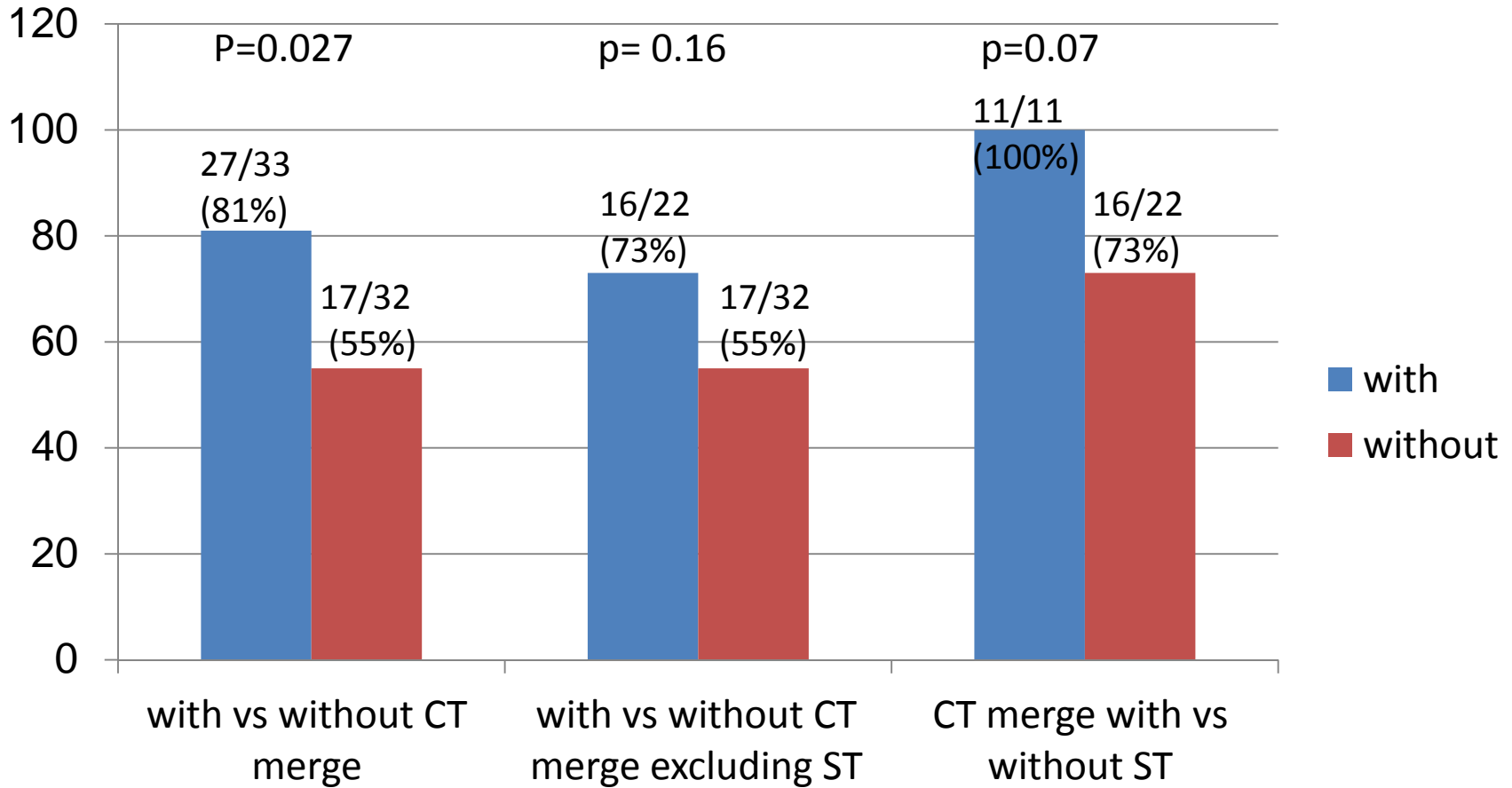
Conflict of Interest

- No potential conflict

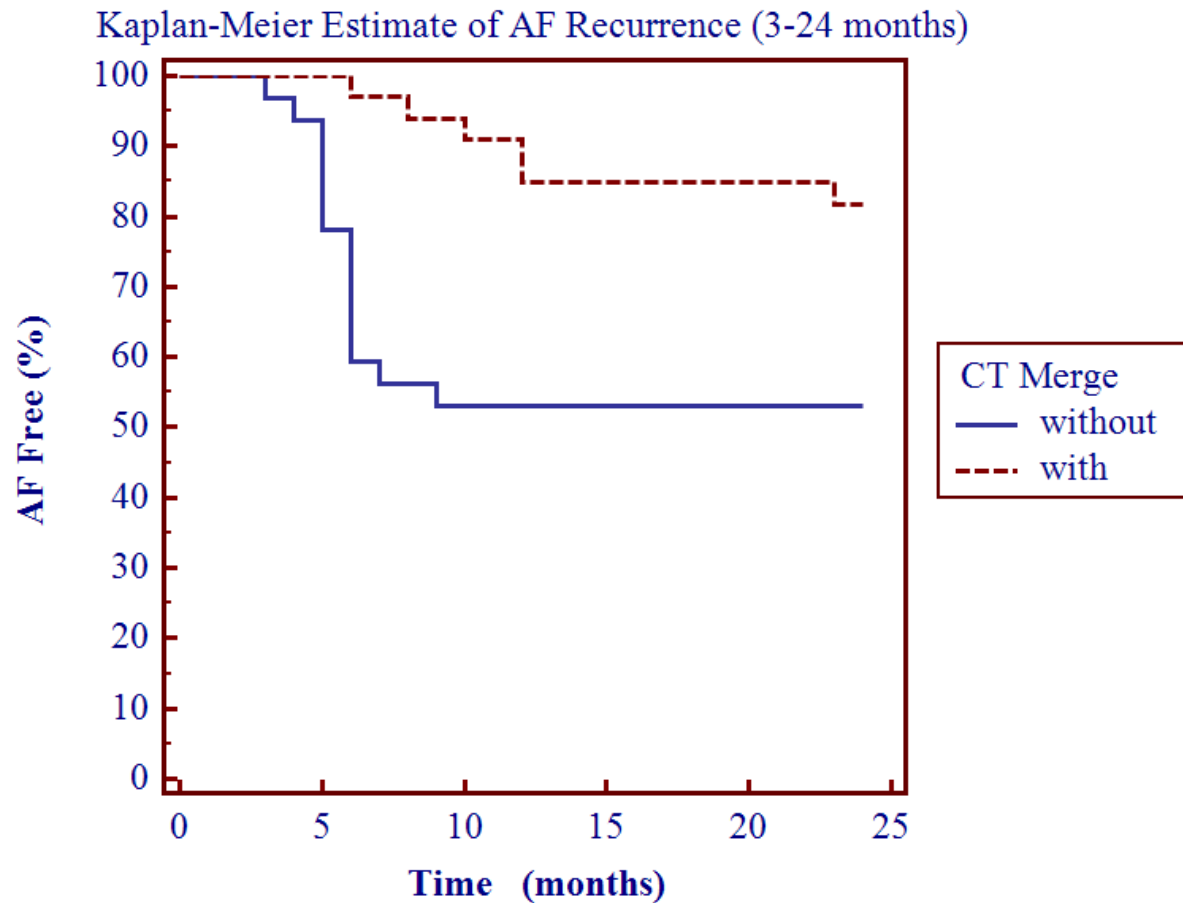
Baseline

	CT Merge – (n=32)	CT Merge + (n=33)	p
Sex (male)	19	24	0.3
Age (years)	55±8.8	56.7±11.6	0.6
Persistent AF	5	4	0.7
AADs	28	31	0.42
CTI Ablation	7	7	0.76
Linear Lesions	8	8	0.77

AF Free



Kaplan-Meier Estimate of AF Recurrence (3-24 months)



Conclusion

- These preliminary results suggest that CT merge and smart touch technology can reduce the recurrence of atrial tachyarrhythmia after PVI among patients with PAF.