


ACS case with Complex PCI

A smart man may bailout a situation - that the clever one would avoid...

Yonathan Hasin, Menachem Nahir, Naoum Farid
Cardiovascular Institute, Padeh Medical Center, Poria

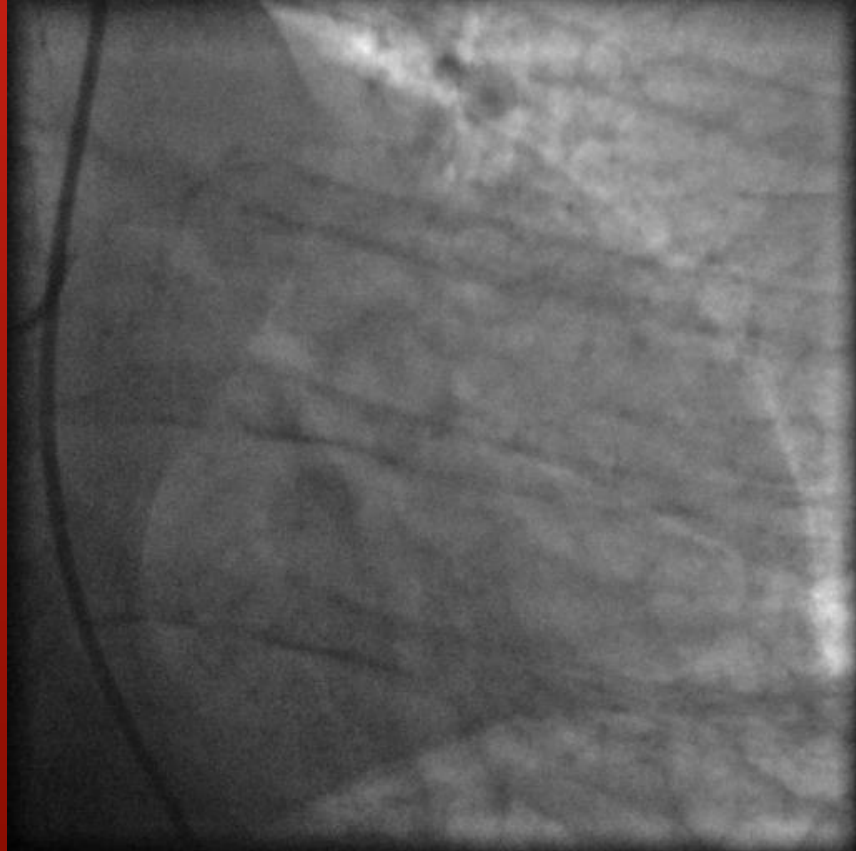
Case presentation

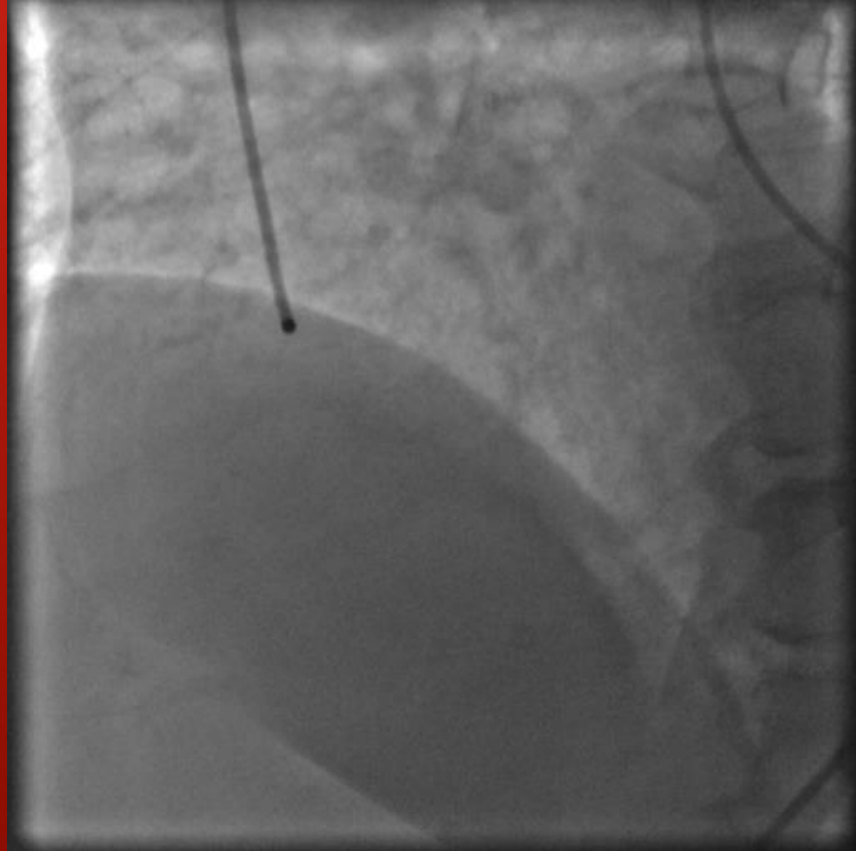
-  , 68 y
- HTN, Hyperlipidemia
- 9/2012 – acute admmition
- – abdominal pain, fever
 - DX – urinary tract infection
- - effort dyspnea

Evaluation:

- ECG – normal sinus rhythm
- Echo: normal systolic function. LVEF=65-70%
- LVH – mild (IVS/PW = 12-13/11-12mm)
- No wall motion abnormality
- Diastolic dysfunction – impaired relaxation
- Effort test: 3:49 min. HR = 129, 5.5 METS
horizontal ST segment depression – 2mm







Coronary Cath

- Coronaries:
 - LM distal – 90%
 - LAD origin – 95%
 - Cx origin – 90%
 - M – 70-90%
 - RCA prox – 90%
- Left subclavian a. – 50%
- Thoracic descending aorta – tortuous
- Syntax score: 43

Plan... and Practice

- Plan - CABG
- The patient refused surgery...



Padeh MC experience

- Unprotected LMCA stenting: (2001 – 2012)
-
- patients = 342
 - BMS - 230 (67%)
 - DES - 112 (31%)
- Follow up:
 - Clinical - 100%
 - Angiographic - 67.3%

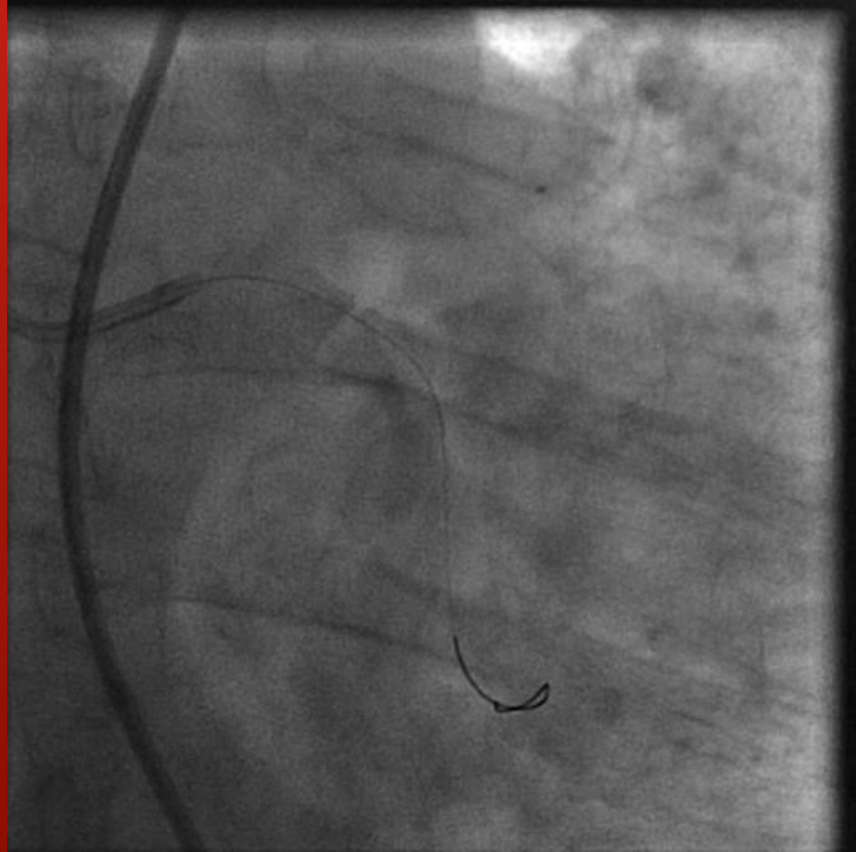
Clinical presentation	
Unstable Angina	59.9%
STEMI	5.8%
NSTEMI	13.5%
Stable Angina	20.8%

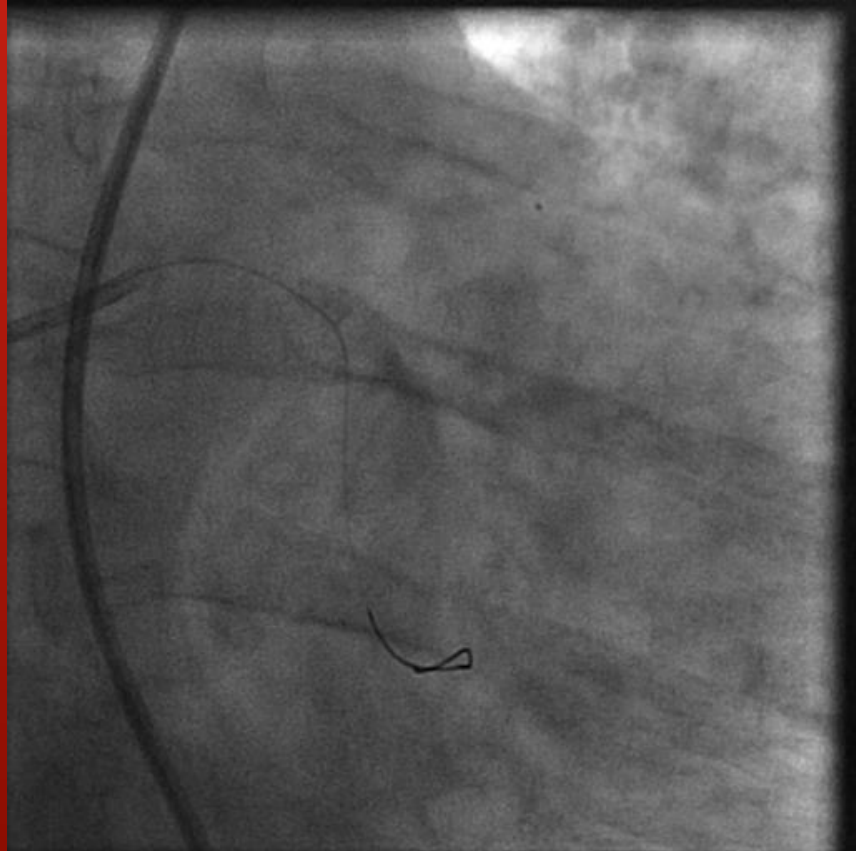
LM Immediate success + Follow up

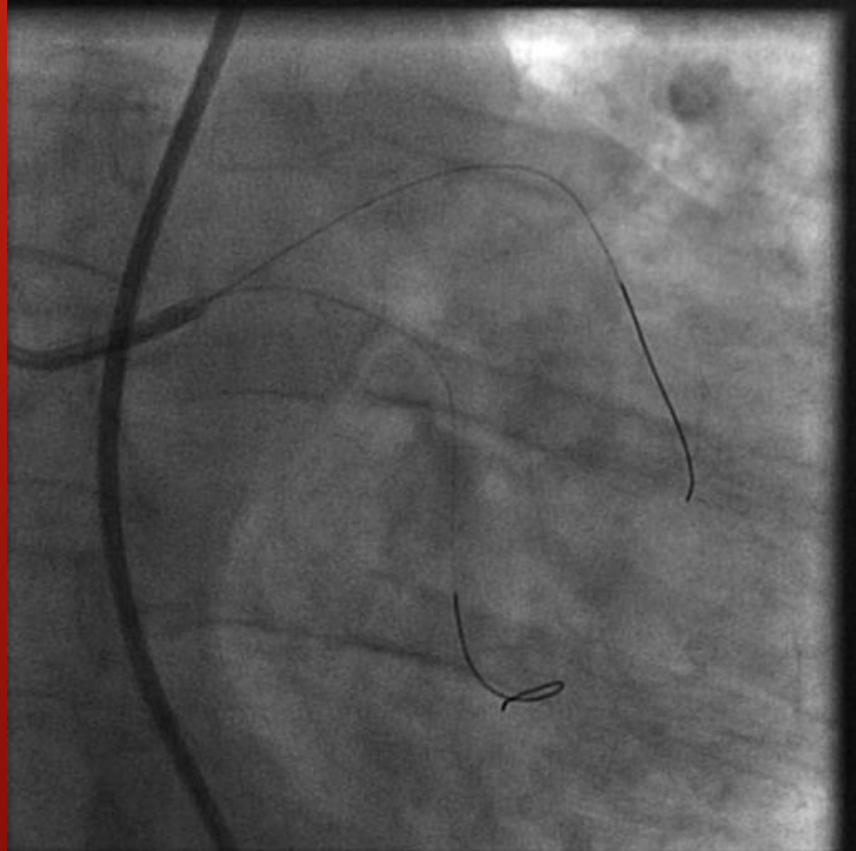
OUTCOME	
Procedural success	100%
Urgent/Emergent CABG	0%
In-hospital Mortality	2.1%
1 Year Mortality	4.1%
1 Year - LM Re- Intervention	2.1%
1 Year - Non LM Re- Intervention	19.8%
1 Year - CABG surgery	1.2%

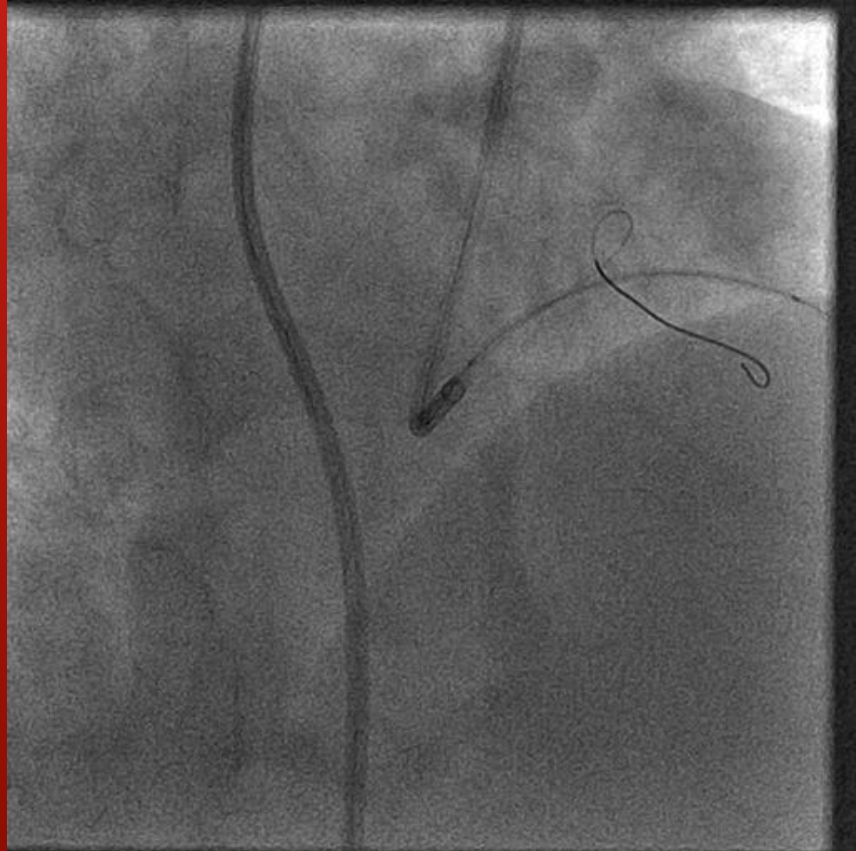
→ Back to the cath lab...

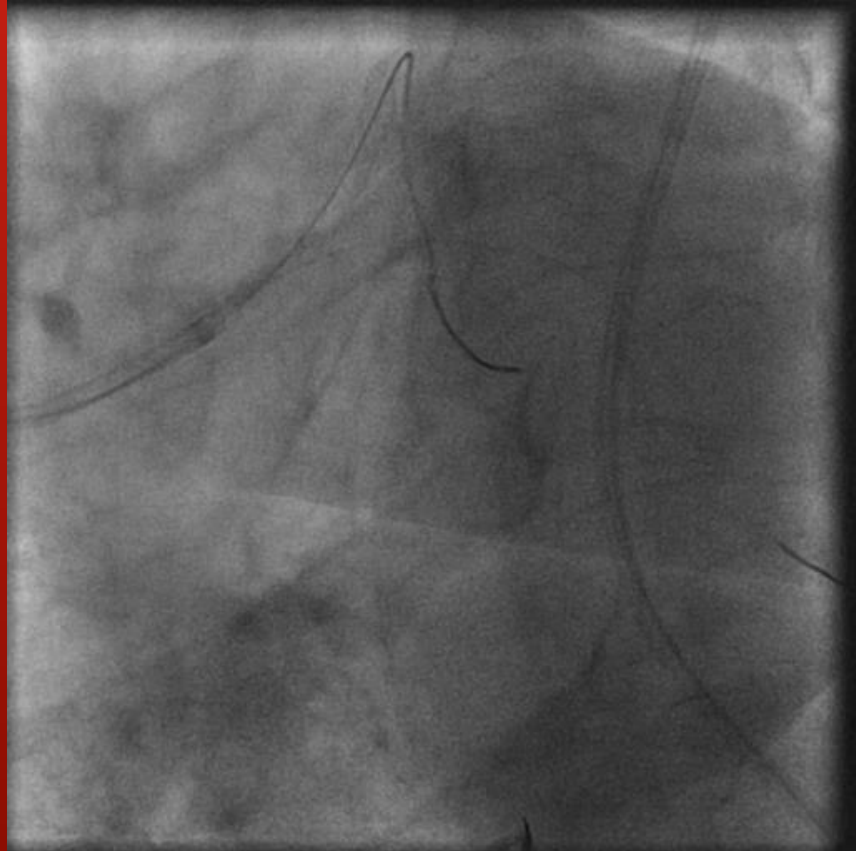






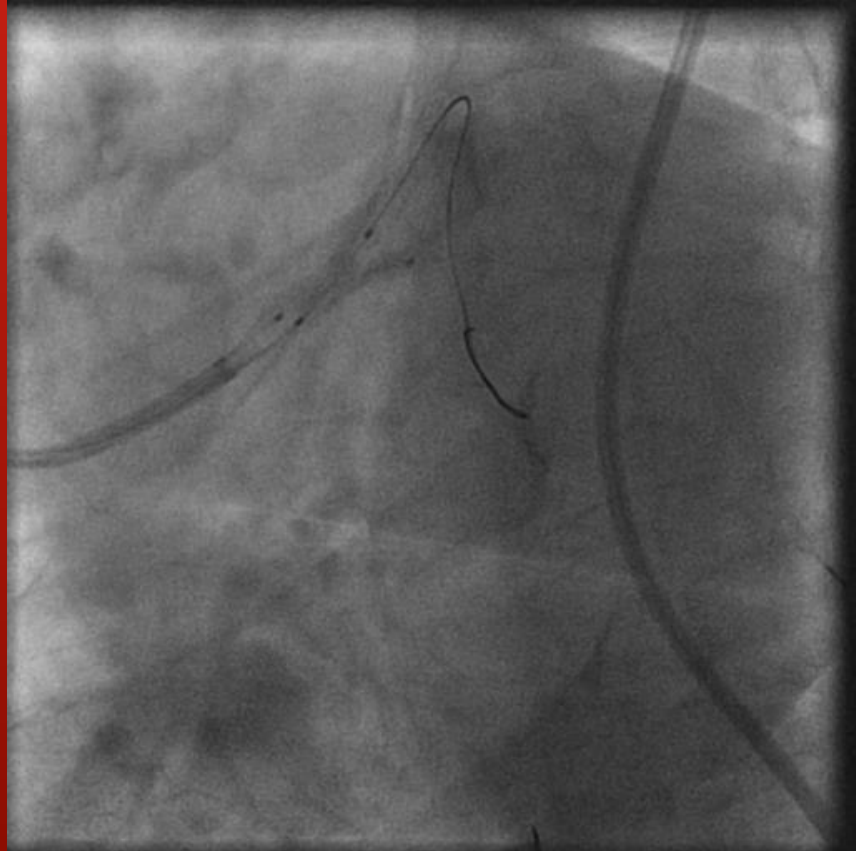


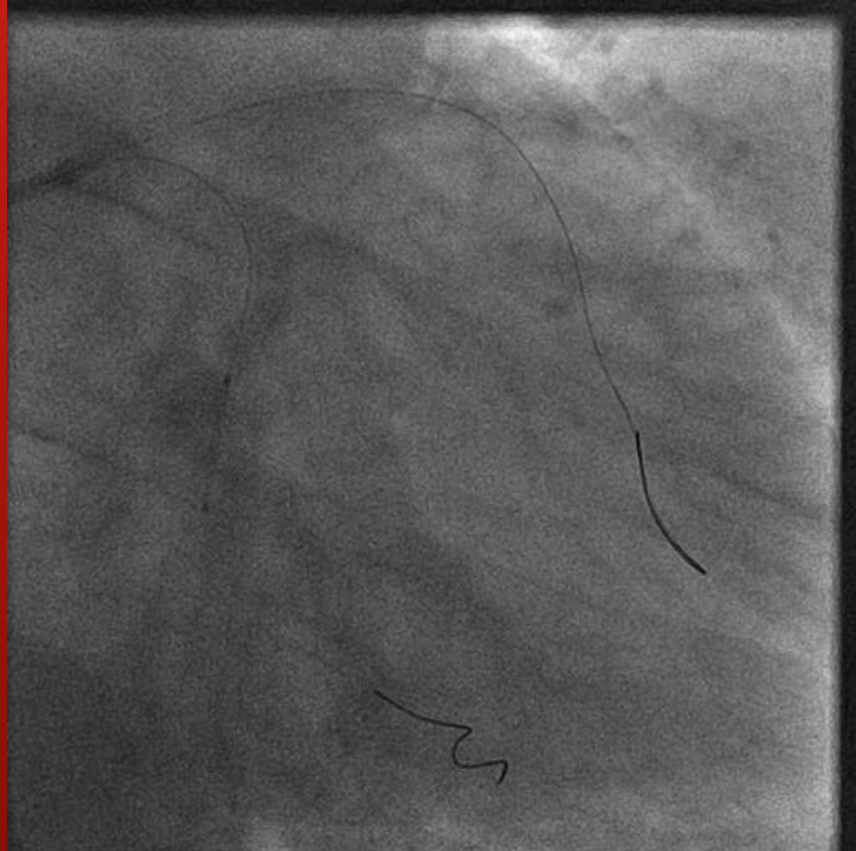












PCI – Equipment

- LM – LAD – resolute integrity 38*3mm
- LM/LAD/Cx – kissing balloons 3*20mm+3*20mm
- LM – PTCA – 4*6mm balloon

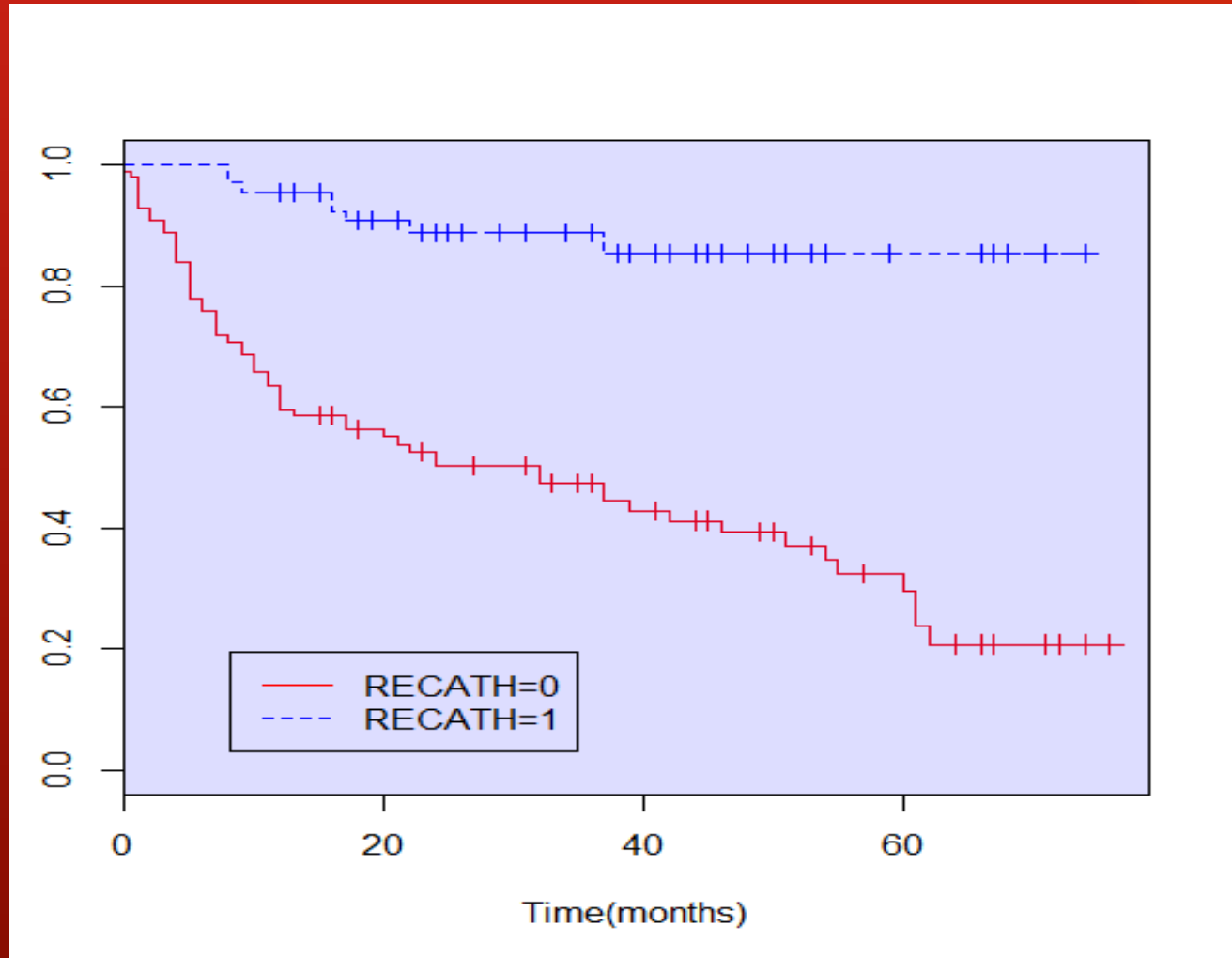
- M2 – resolute integrity 2.25*12mm
- RCA – resolute integrity – 3*34mm

Follow up – Six Months

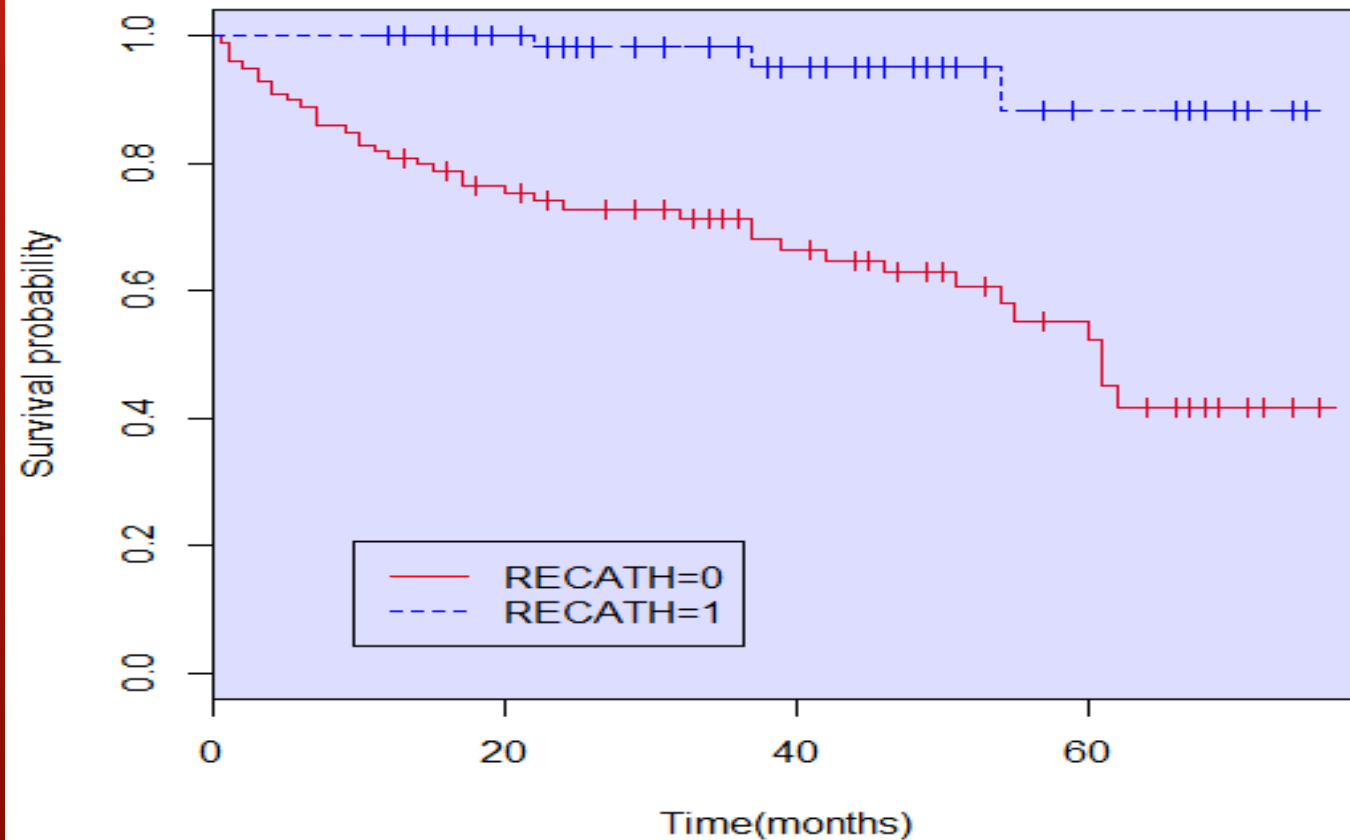
- Filling well
- 1 month – non specific “mandibular pain”
- Exercise test – good functional capacity
- Scheduled coronary angiography

Kaplan Mayer curve – MACE among patients with or without re-catheterization follow up

Freedom from MACE



Kaplan Mayer curve – Survival among patients with or without re-catheterization follow up

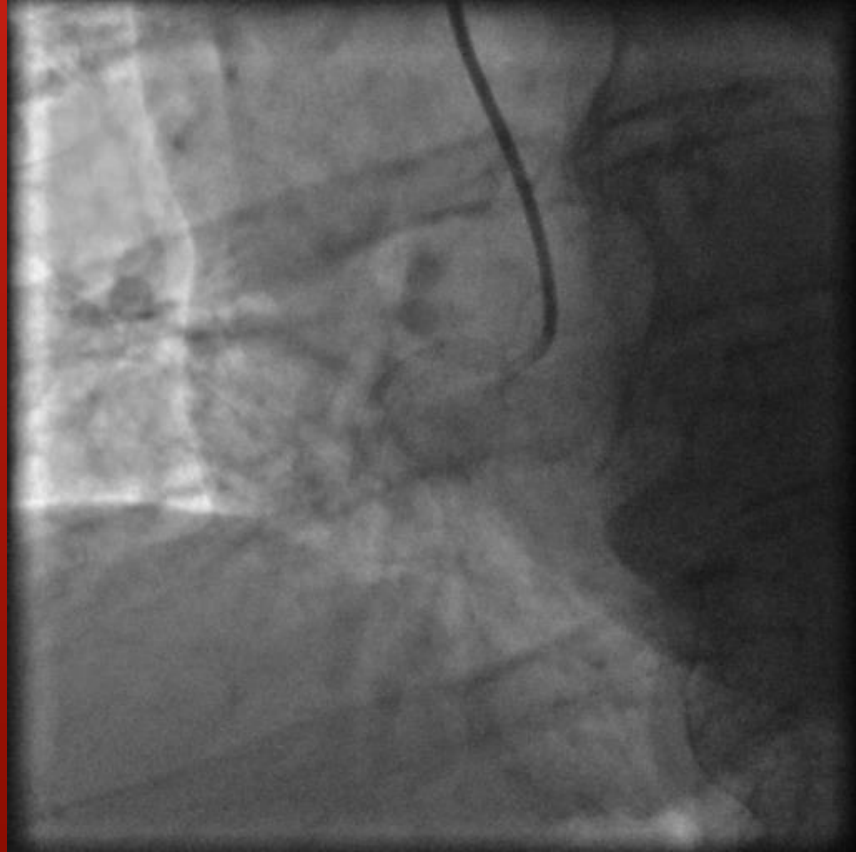


Discussion...

- plan – repeat kissing balloon LAD/origin CX

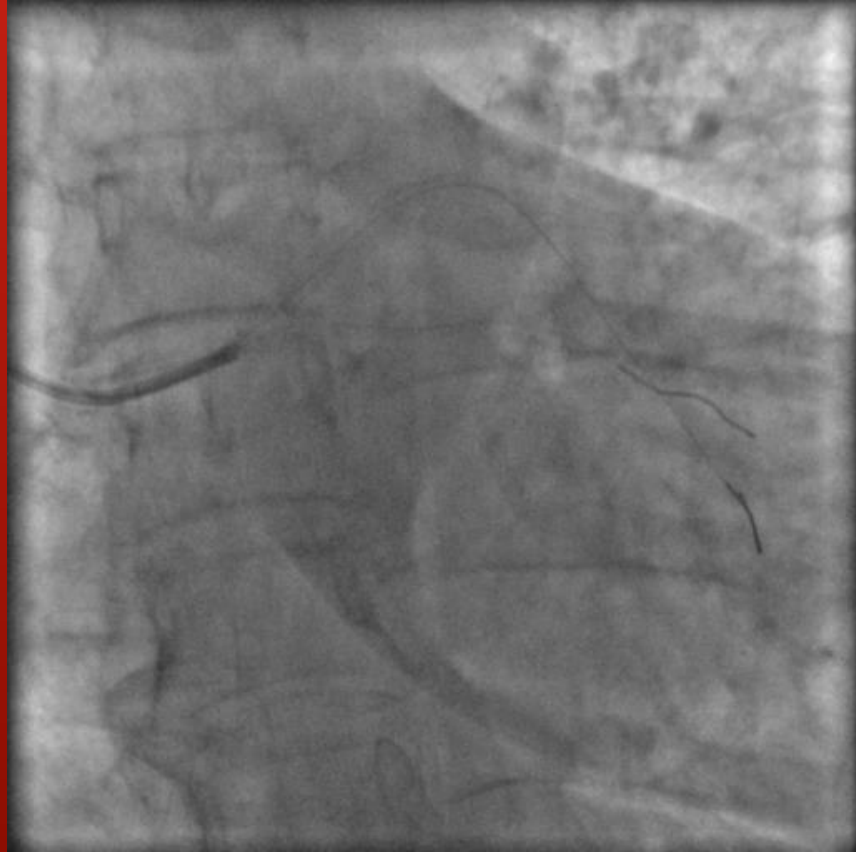
Mistake !!

Leading to → “deep emotional experience of the cath lab”



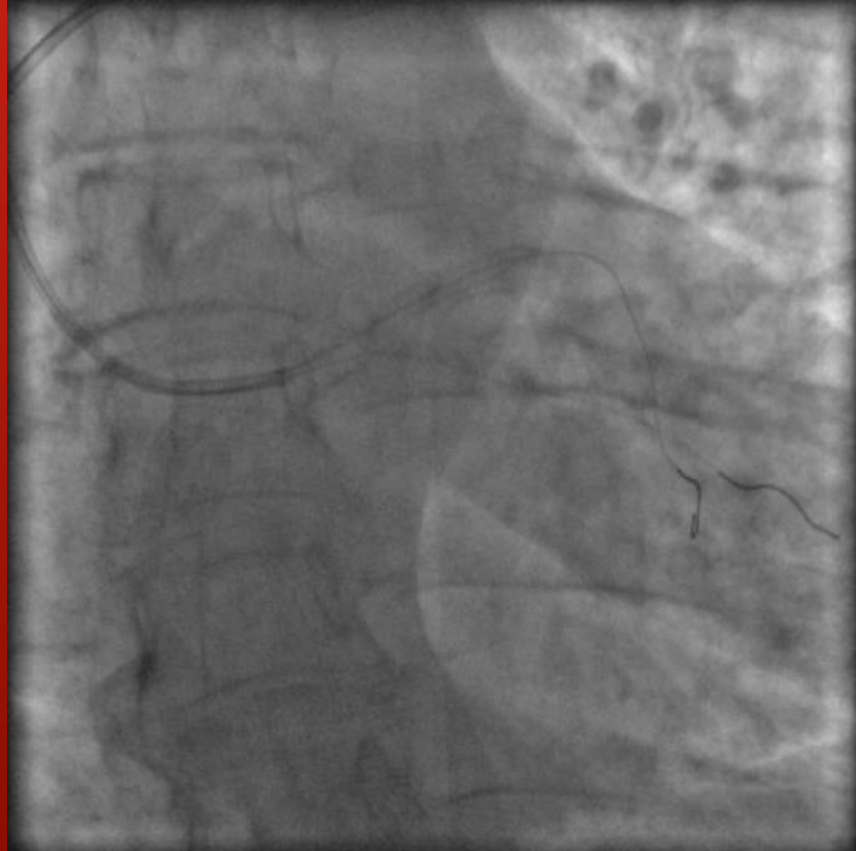


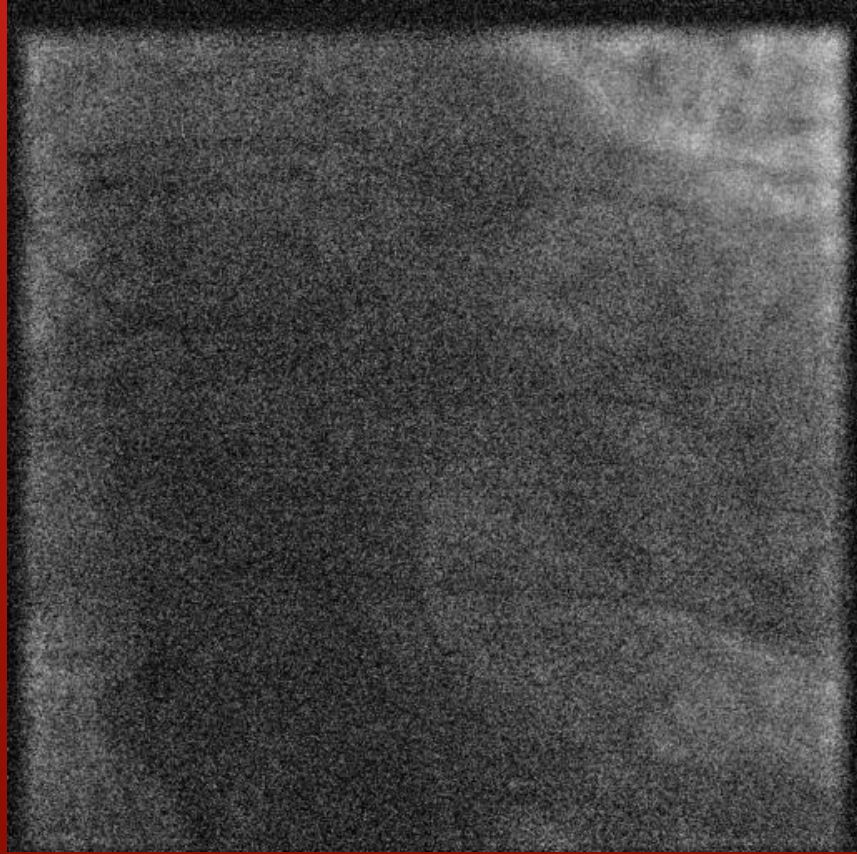


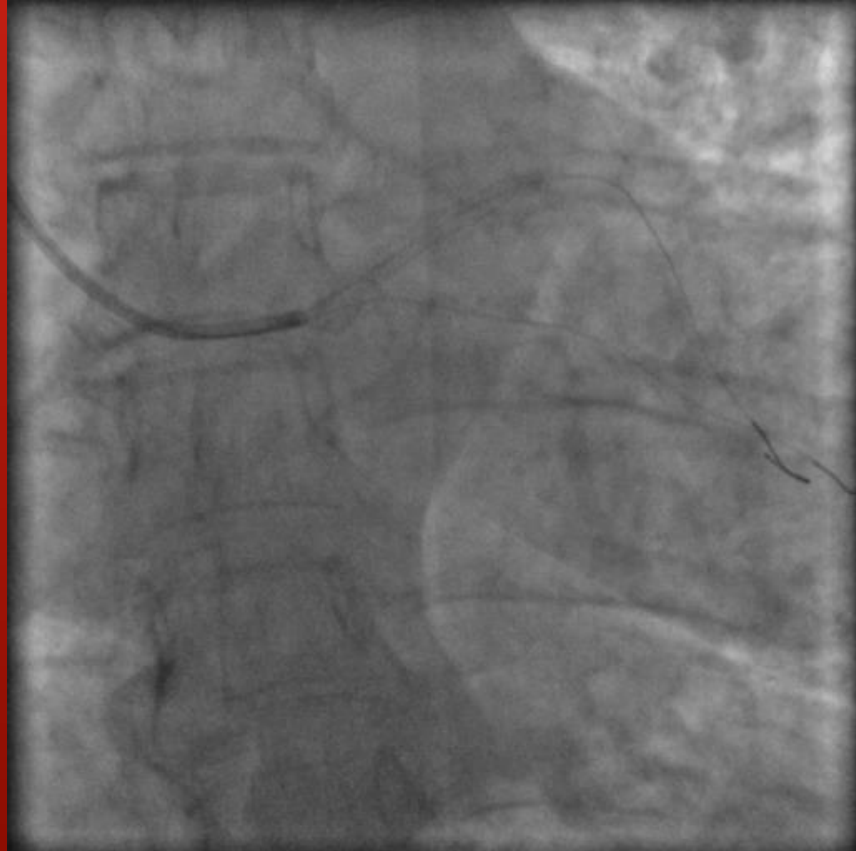


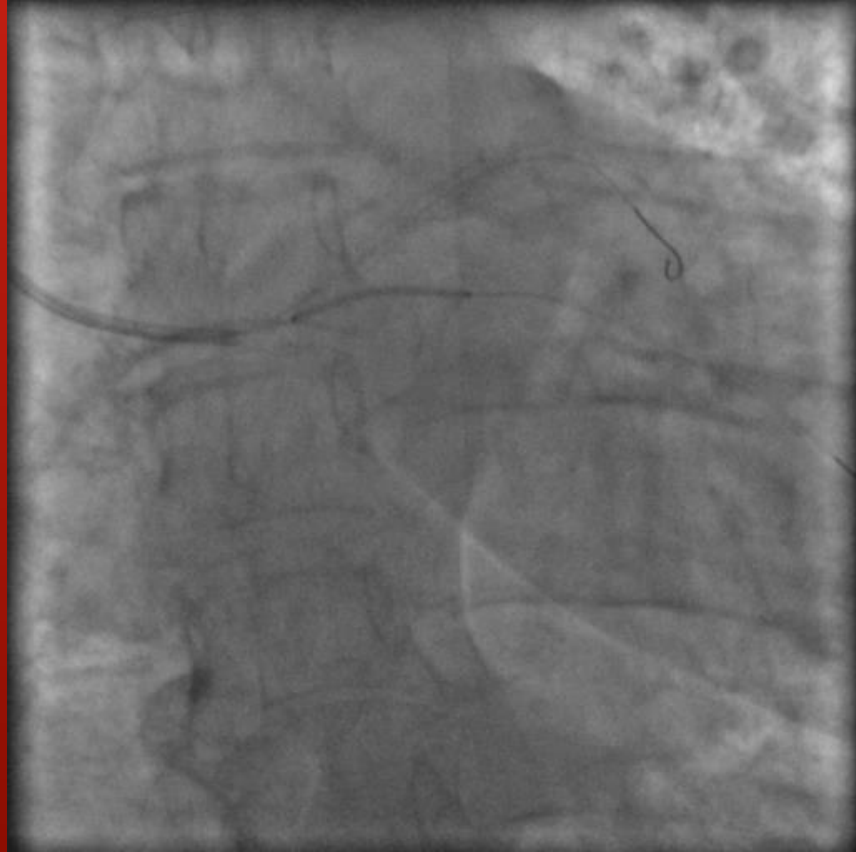








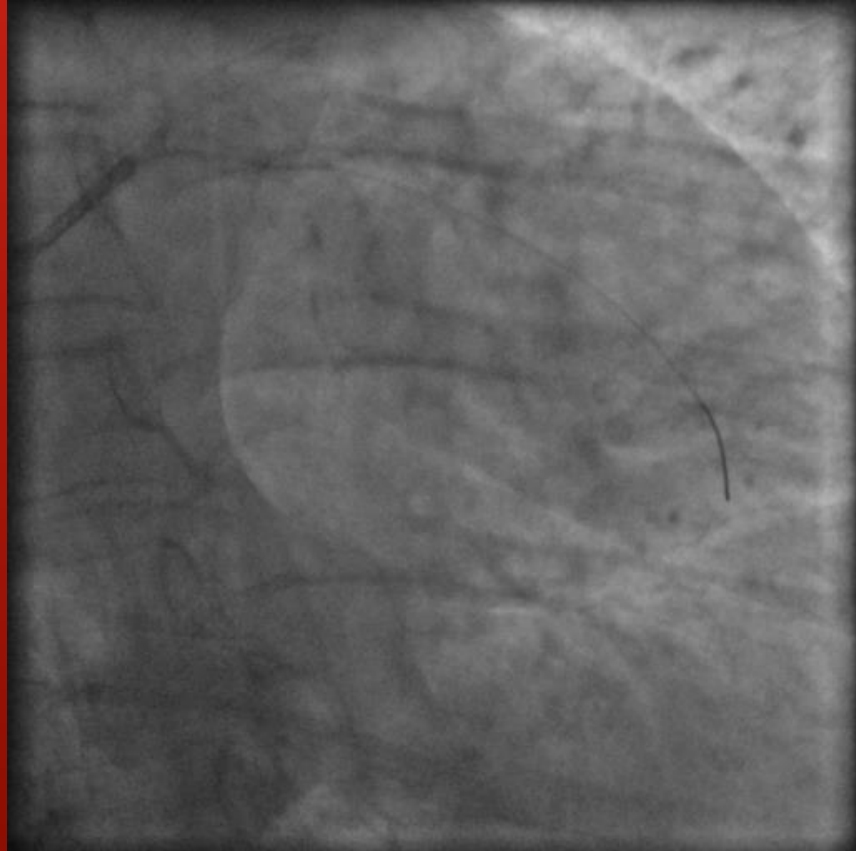




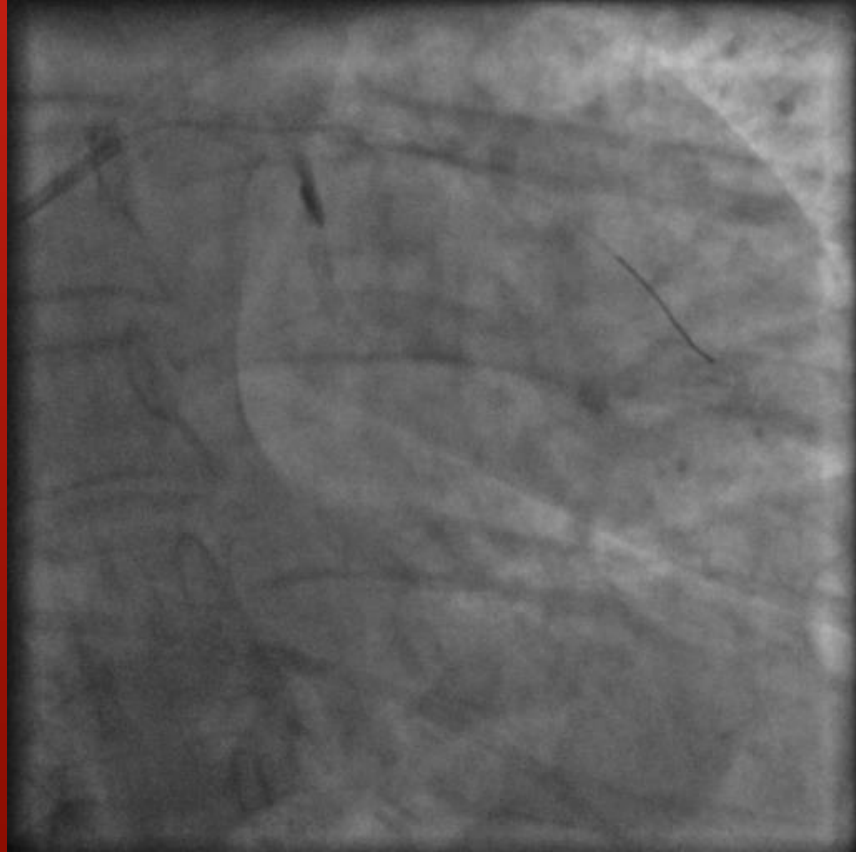


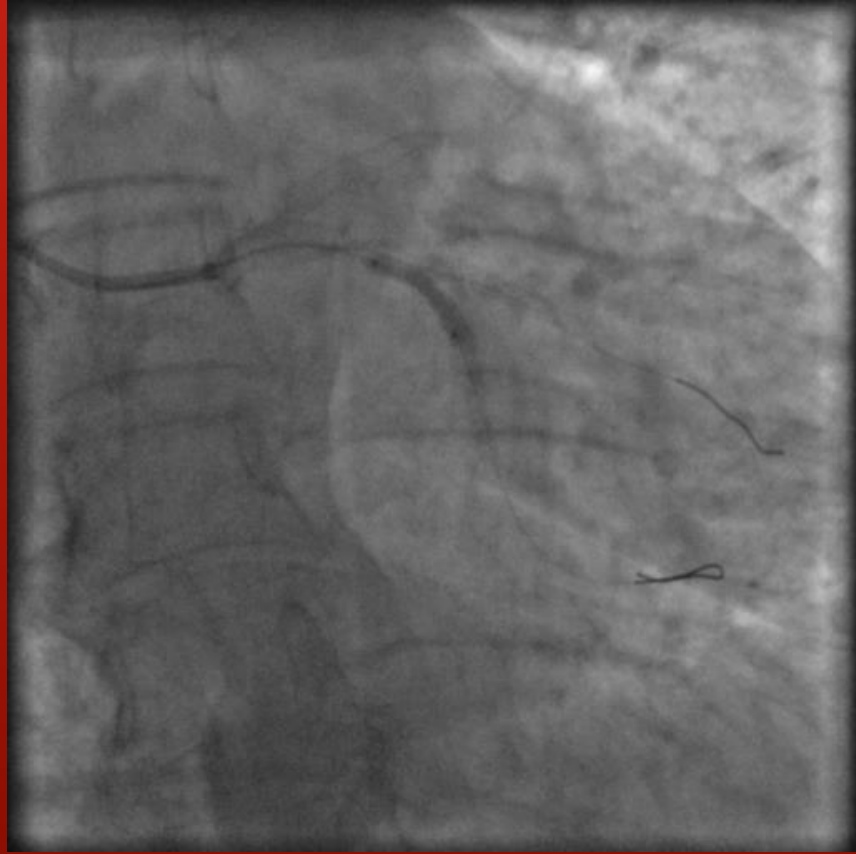


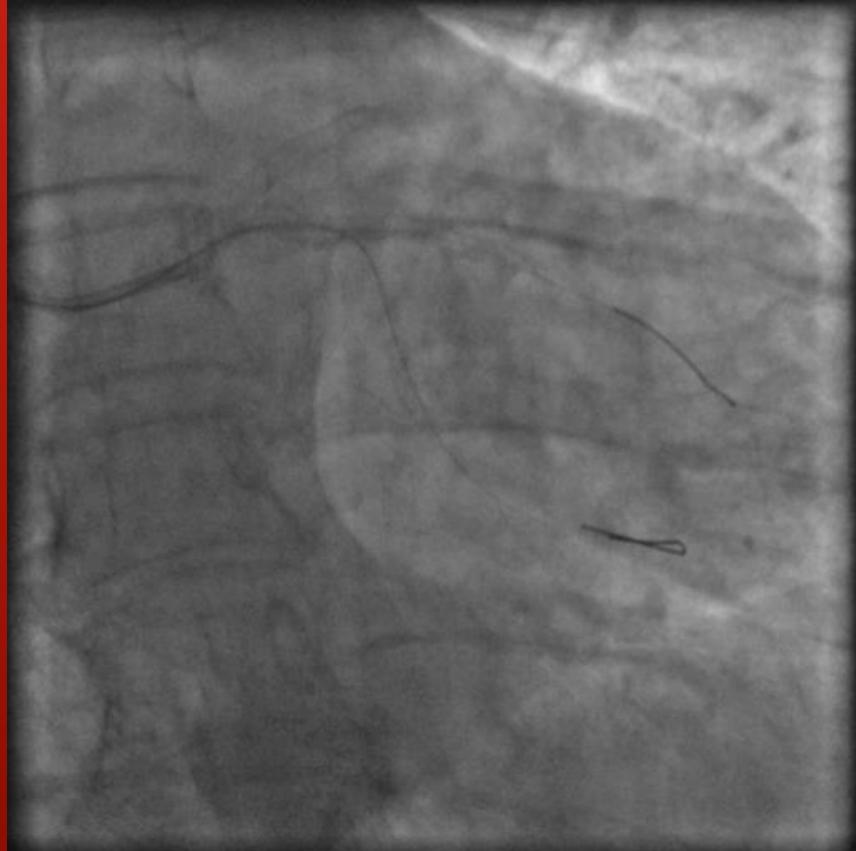


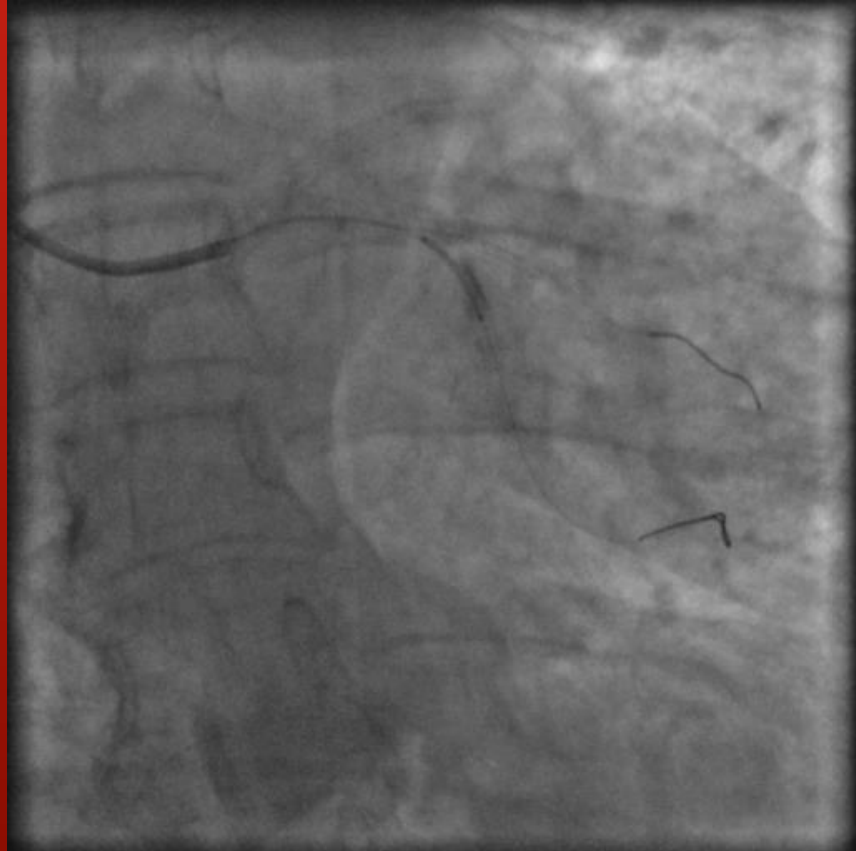


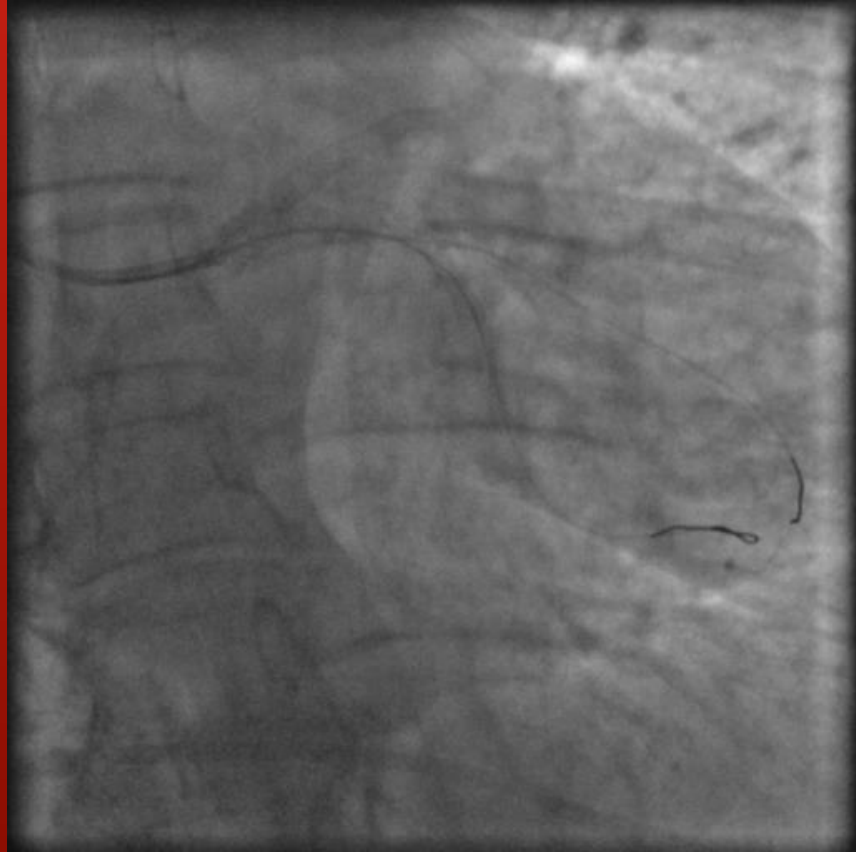








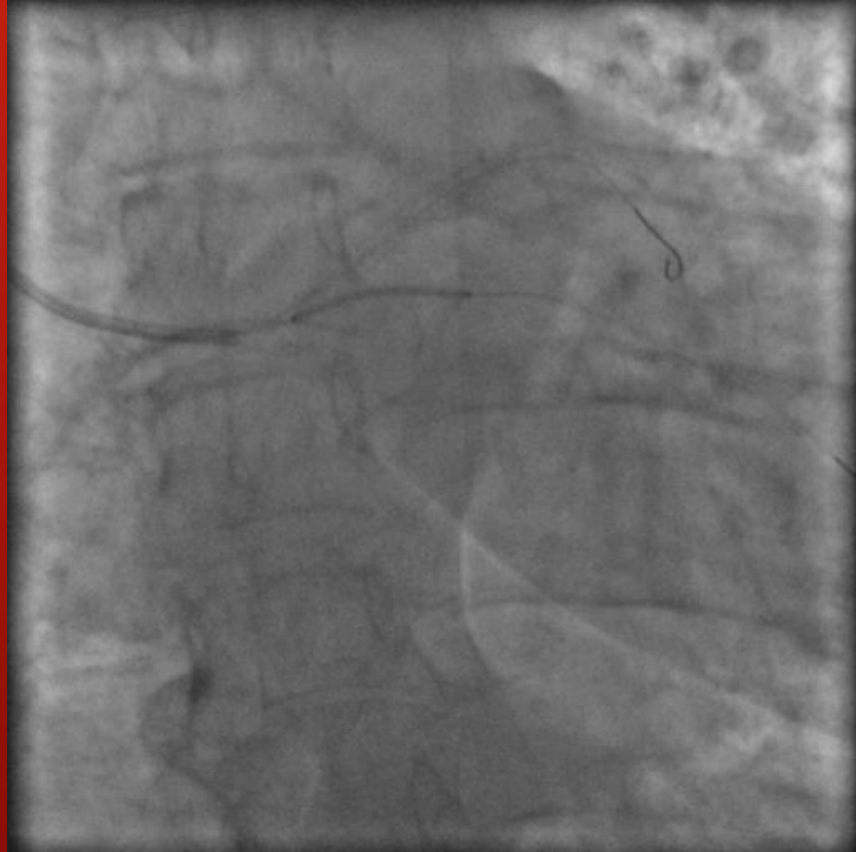
















Second PCI - Equipment

- LM - Cx- resolute integrity
- M1 – resolute integrity 2.25*26mm
- M2 – resolute integrity 2.25*12mm

Conclusion

- Bifurcation lesion
- First option: single stent + kissing balloons
- Failed - do not reattempt → stent