

Expect the invisible
during extraction procedures

Ksenya Kochkina and Michael Glikson
Sheba Medical Center

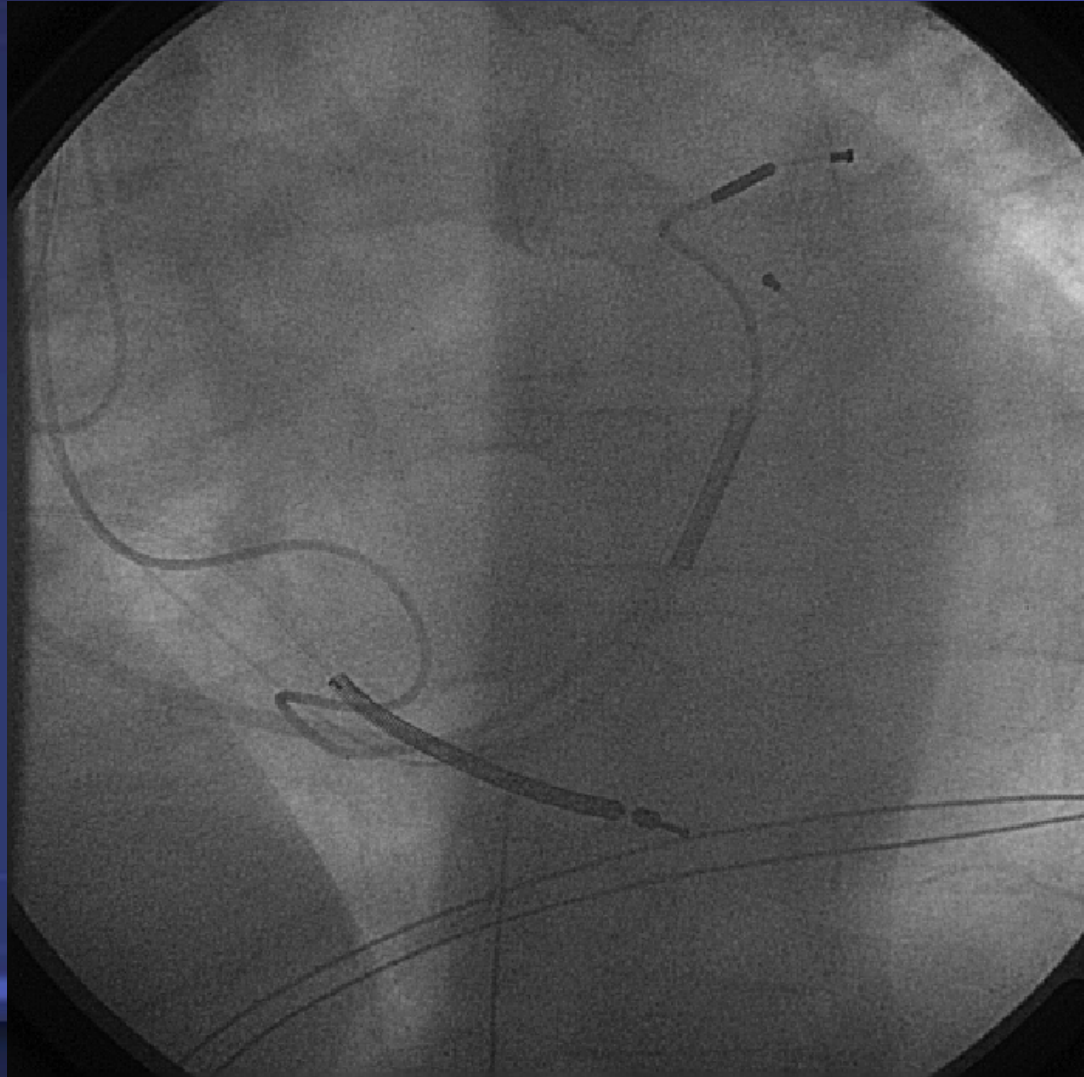


Patient:

- Male, 40 years old
- Diagnose: Pacemaker system
endocarditis, systemic
infection.
- Organic HD: dilated CMP, NYHA 3,
EF 25%

Operations: 01/01/2006 CRTD Medtronic Marquis
08/10/2009 replace pacer in the same pocket
(Medtronic Concerto)
implanted new LV lead (reason: no
capture and no sensing of LVL)

Basic view

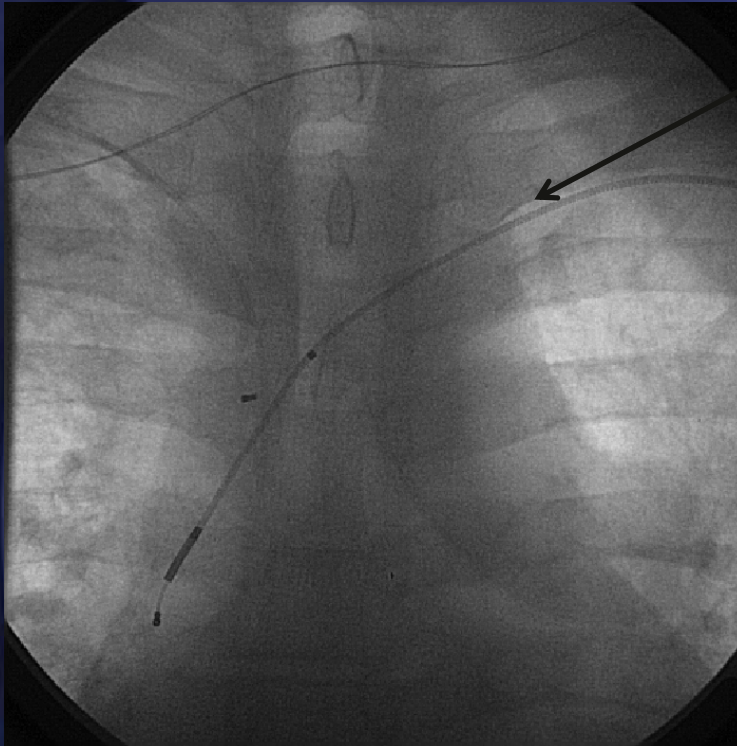


*All leads except LV
removed using the tools :*

- Locking stylet
- Polyethylene sheath
- Electrosurgical dissection sheath

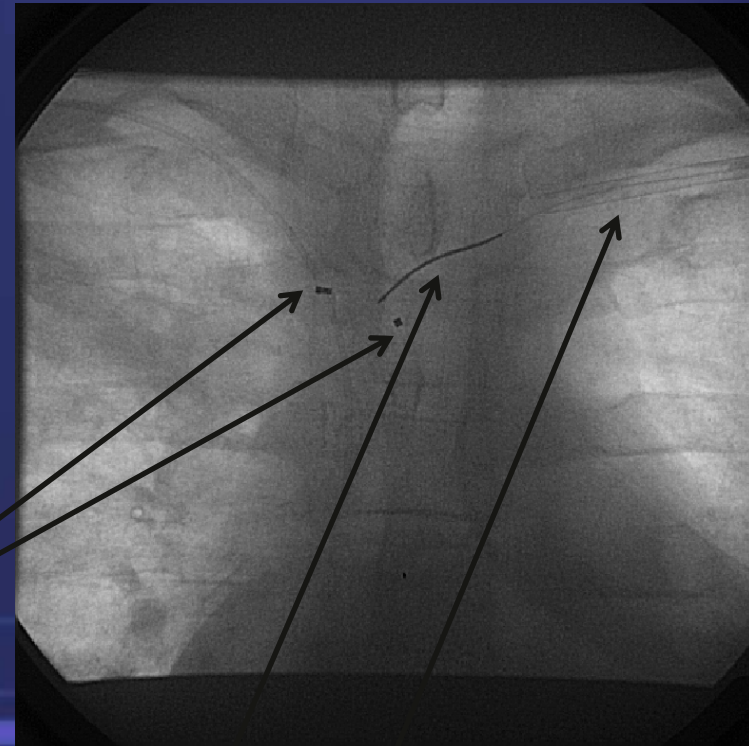


We were then left with one LV lead :



The LV lead was pulled by manual traction , mostly removed but distal segment (looks like 2 cm) with tip and ring retained in innominate vein (x-ray visible)

Retained segment with tip and ring markers still in vein



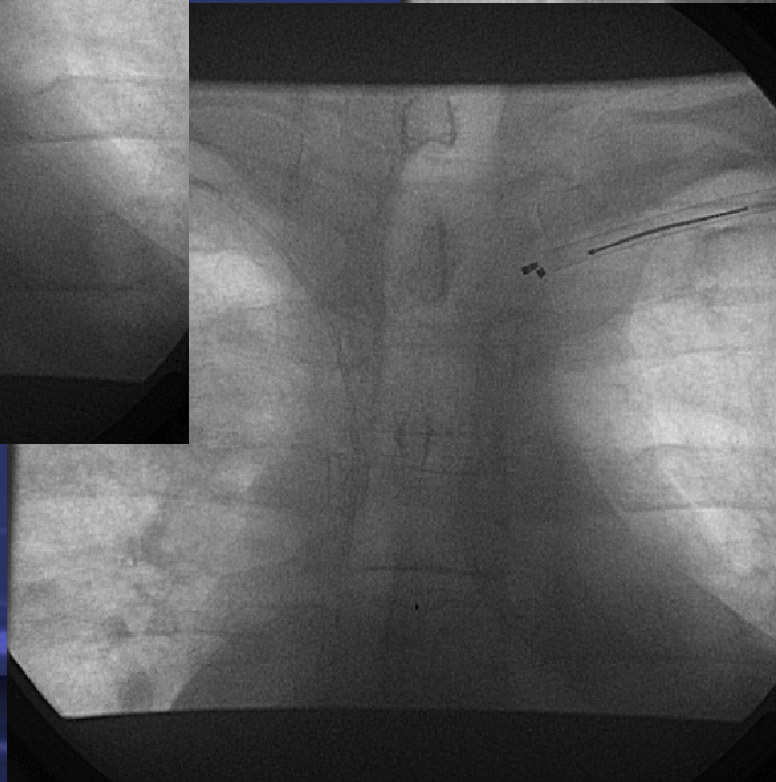
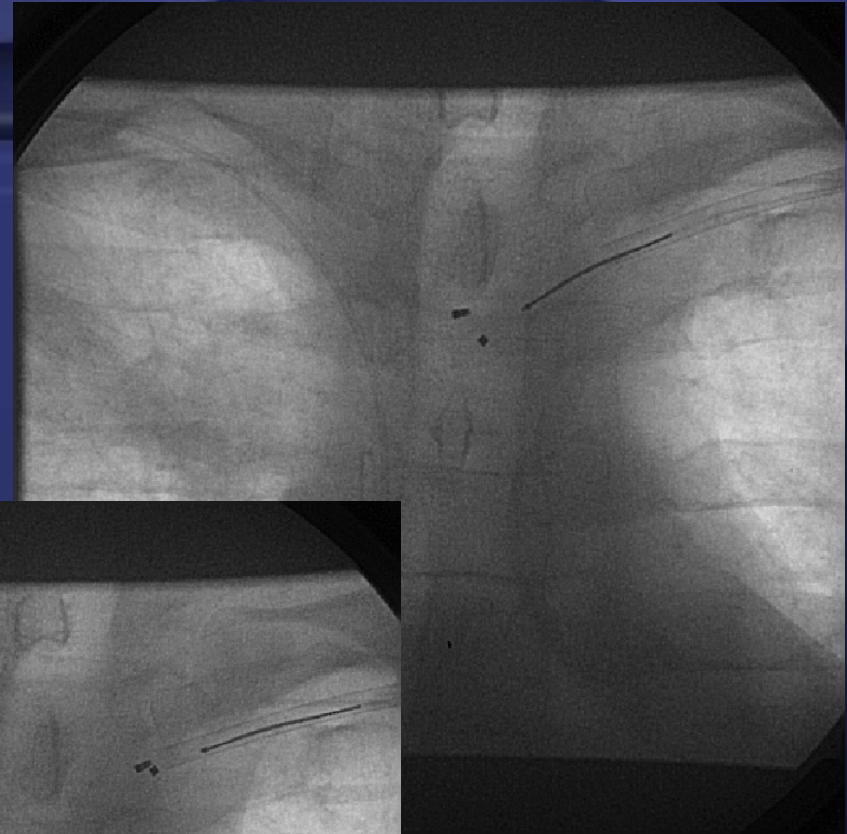
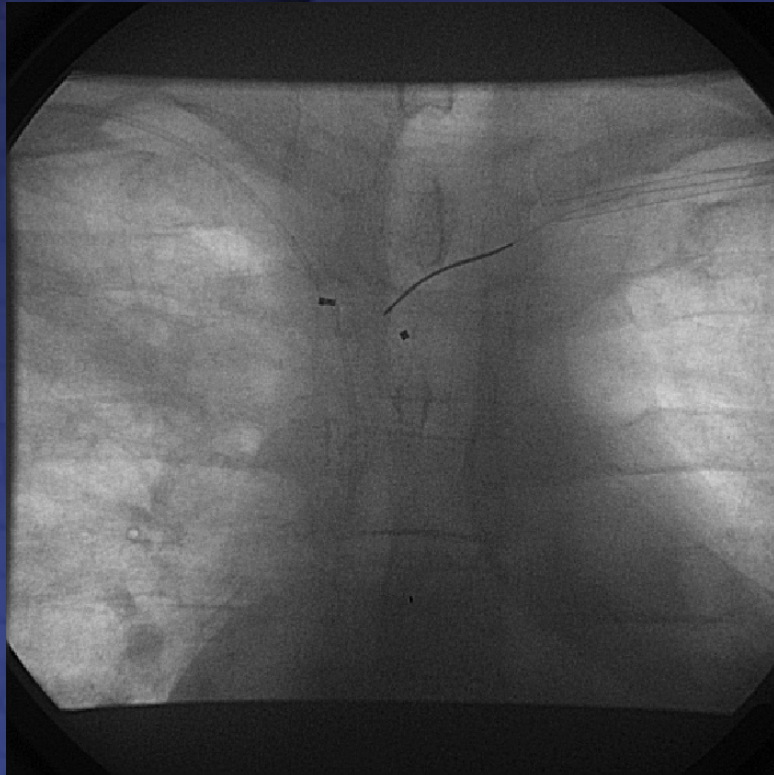
Lasso catheter approaching the retained segment via subclavian sheath

Used device

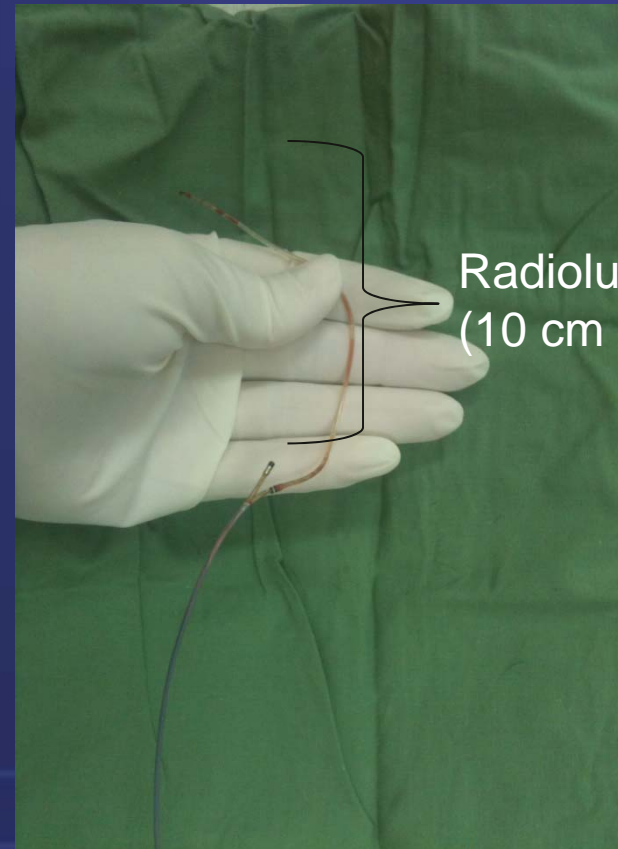


AndraSnare, Andramed

Retrieval



Retrieved part



Conclusions :

When extracting lead segments remember that what you see by X ray may only be the tip of the iceberg ...

