



Acute Coronary Syndrome Israeli Survey (ACSIS) 2013

Overview

Professor Ilan Goldenberg, MD
Director, Israeli Association for Cardiovascular Trials
(ACSIS Coordination Center)



Acute Coronary Syndrome Israeli Survey (ACSIS) 2013

Period	April-May 2013
Hospitals	All 25 hospitals admitting ACS
Departments	CCU/Cardiology
Inclusion	ACS, OHCA



Zefat - Rebecca Sieff; **Tiberias** - Poriah; **Nazareth** – Nazareth Hospital, Holy Family Hospital; **Afula** – Central Hae'mek; **Naharyah** – Western Galilee; **Haifa** – B'nei-Zion, Rambam, Carmel; **Hadera** - Hillel Yaffe; **Netanya** - Laniado; **Kefar Sava** - Meir; **Tel Aviv Area** - Sheba, Rabin Beilinson, Rabin Golda, Ma'ayanei Hayeshua, Sourasky Medical Center, Wolfson; **Be'er Ya'aqov** - Assaf Harofeh, Shmuel Harofeh; **Rehovot** - Kaplan; **Jerusalem** - Bikur Holim, Sha'arei Zedek, Hadassah Mount Scopus, Hadassah Ein Kerem; **Ashqelon** - Barzilai; **Be'er Sheva** – Soroka; **Eilat** – Josephtal.



Acute Coronary Syndrome Israeli Survey (ACSIS) 2013

Survey Associates	The Israel Heart Society The Israeli Working Group on Intensive Care
Affiliation	
Data Management Center	The Israeli Association for Cardiovascular Trials (I-ACT)
Support of:	The Israel Center for Disease Control (ICDC), Ministry of Health & Industry

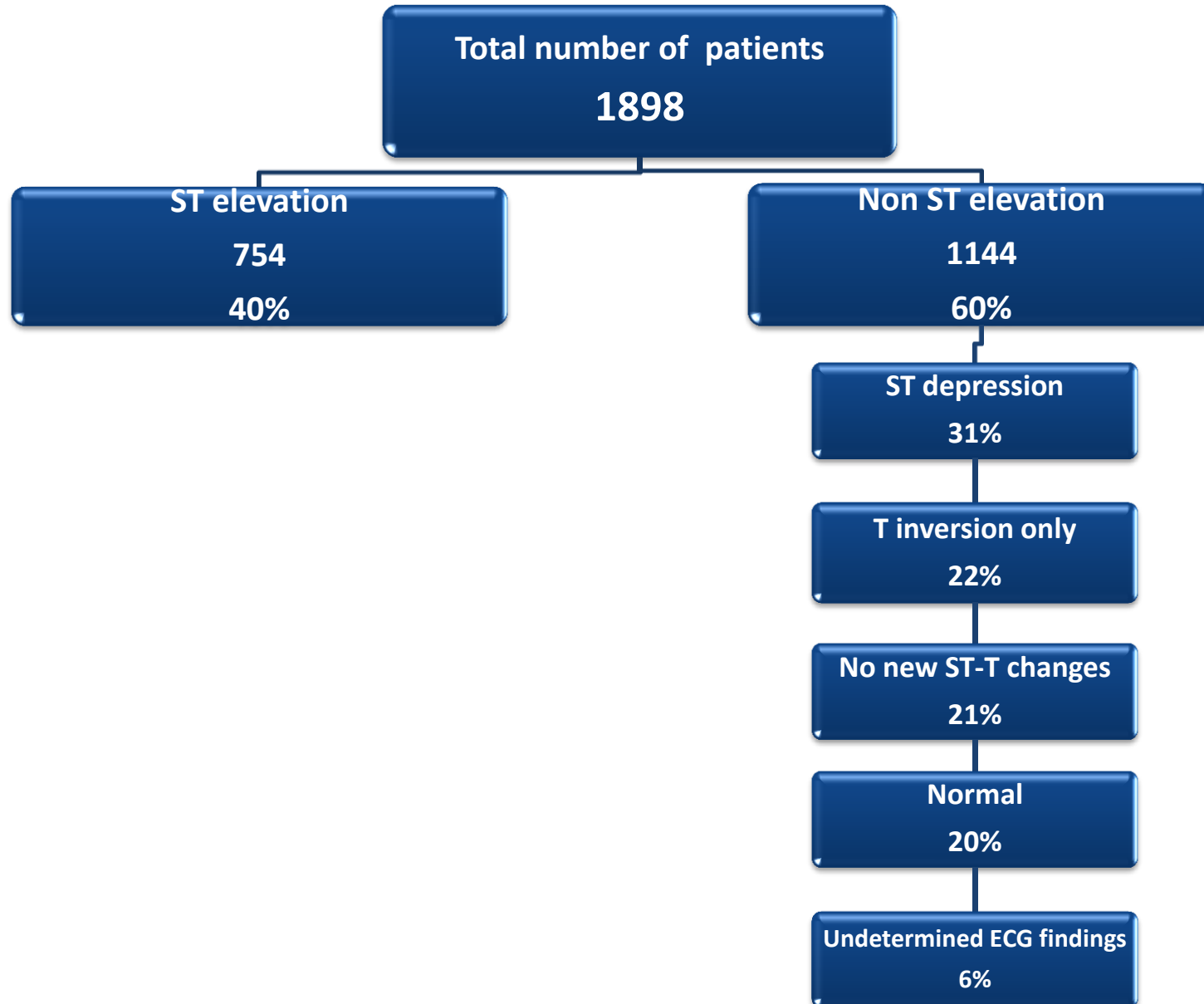


New Features

- **Independent eCRF system**
- **Focused data collection**
- **Comprehensive information regarding antiplatelet Rx**
- **6 month clinical follow-up data for all patients**
- **Cooperative OHCA survey with MADA (ongoing)**



Distribution of patients with ACS by ECG on admission





Mean Age by ECG on Admission

	Mean Age	\pm SD	Median
ST-Elevation	62	13	64
Non ST-Elevation	65	13	65
All	64	13	64



AC SIS 2013

Sex Distribution





ACSIS 2013

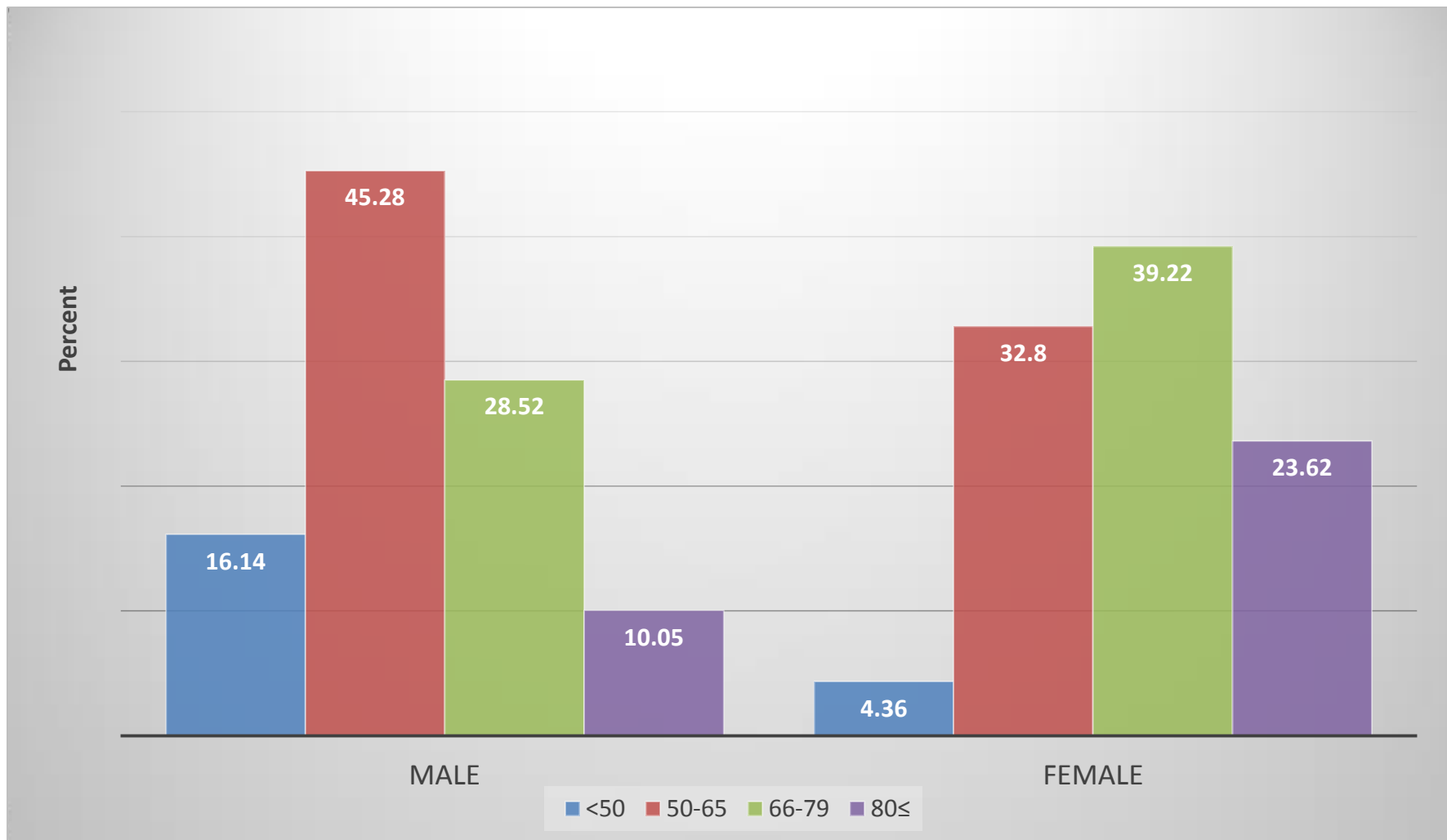
Age difference by Gender

	Mean	SD	Median
Female	70	12	70
Male	62	13	62
All	64	13	64



ACSIS 2013

Age Distribution by Gender

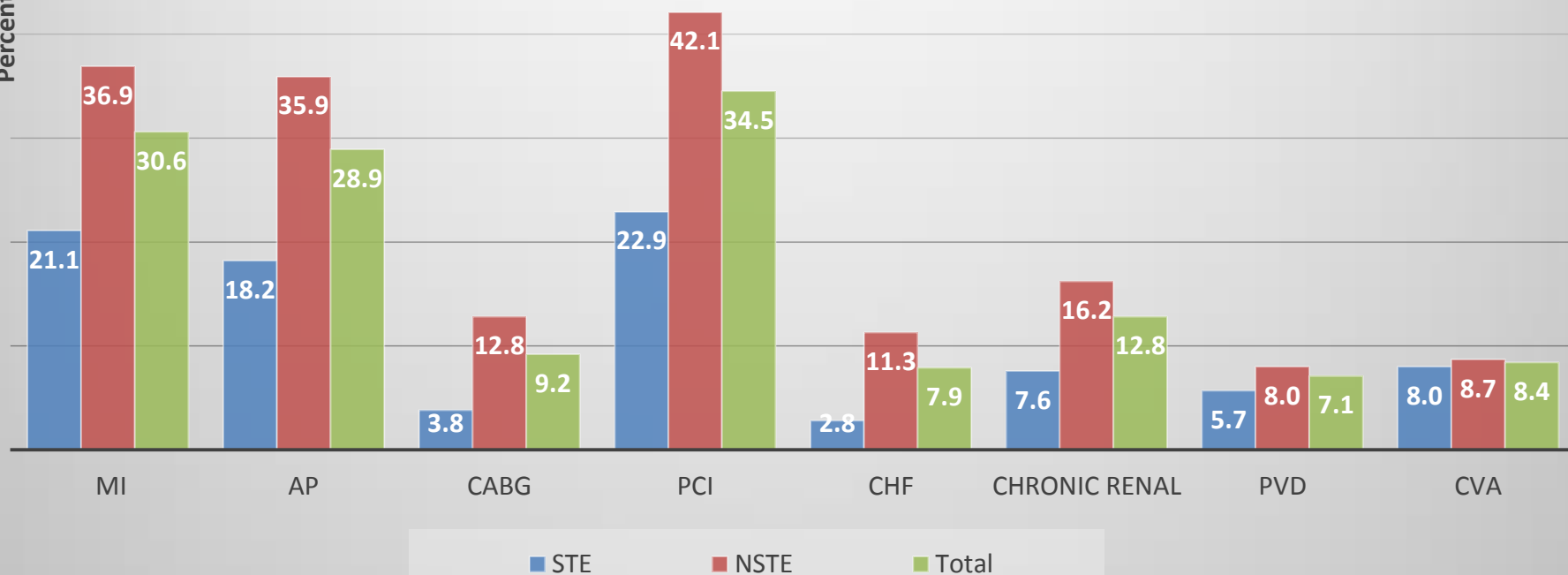




ACSIS 2013

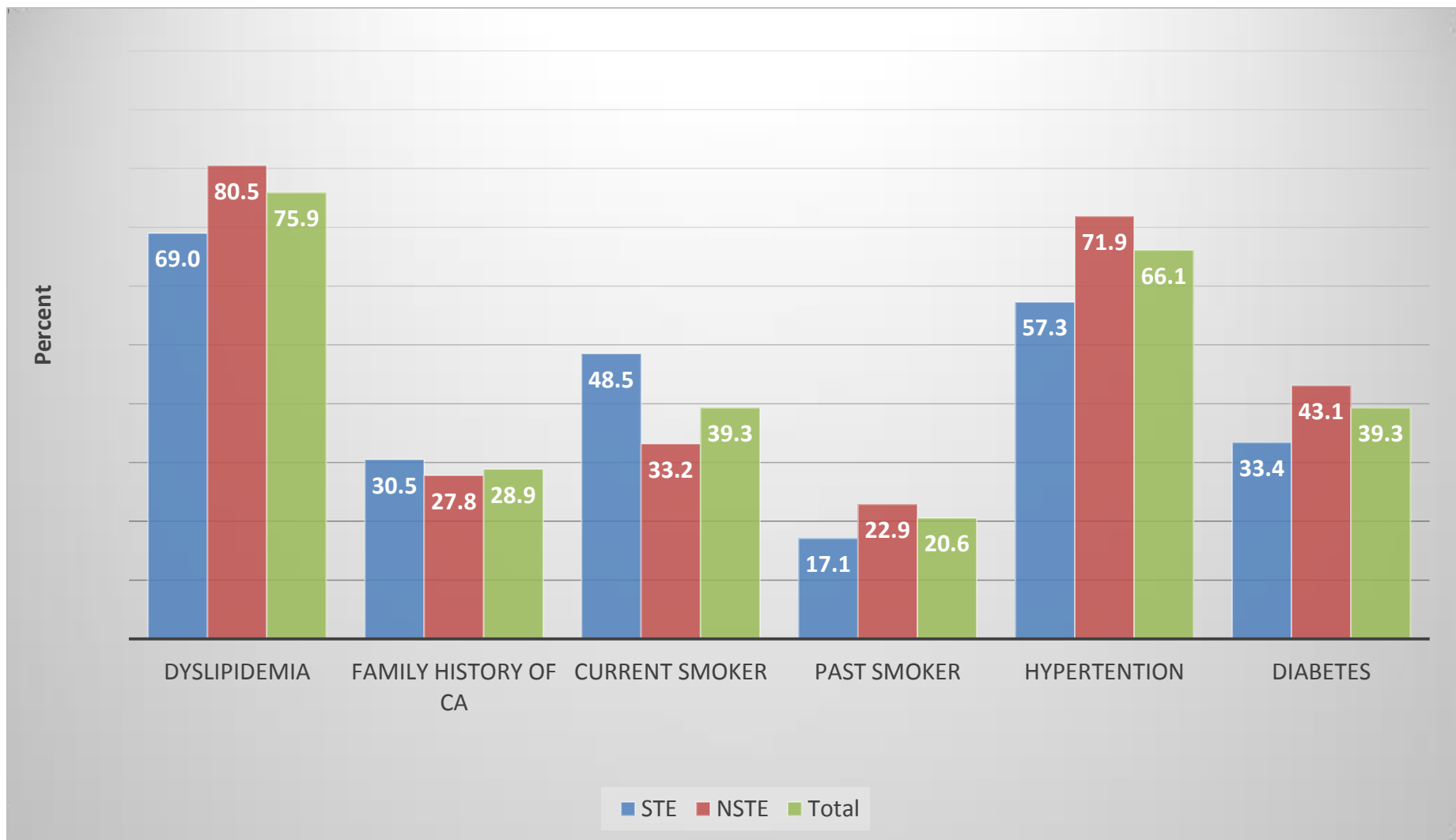
Cardiovascular History

Percent





ACSIS 2013 Risk factors

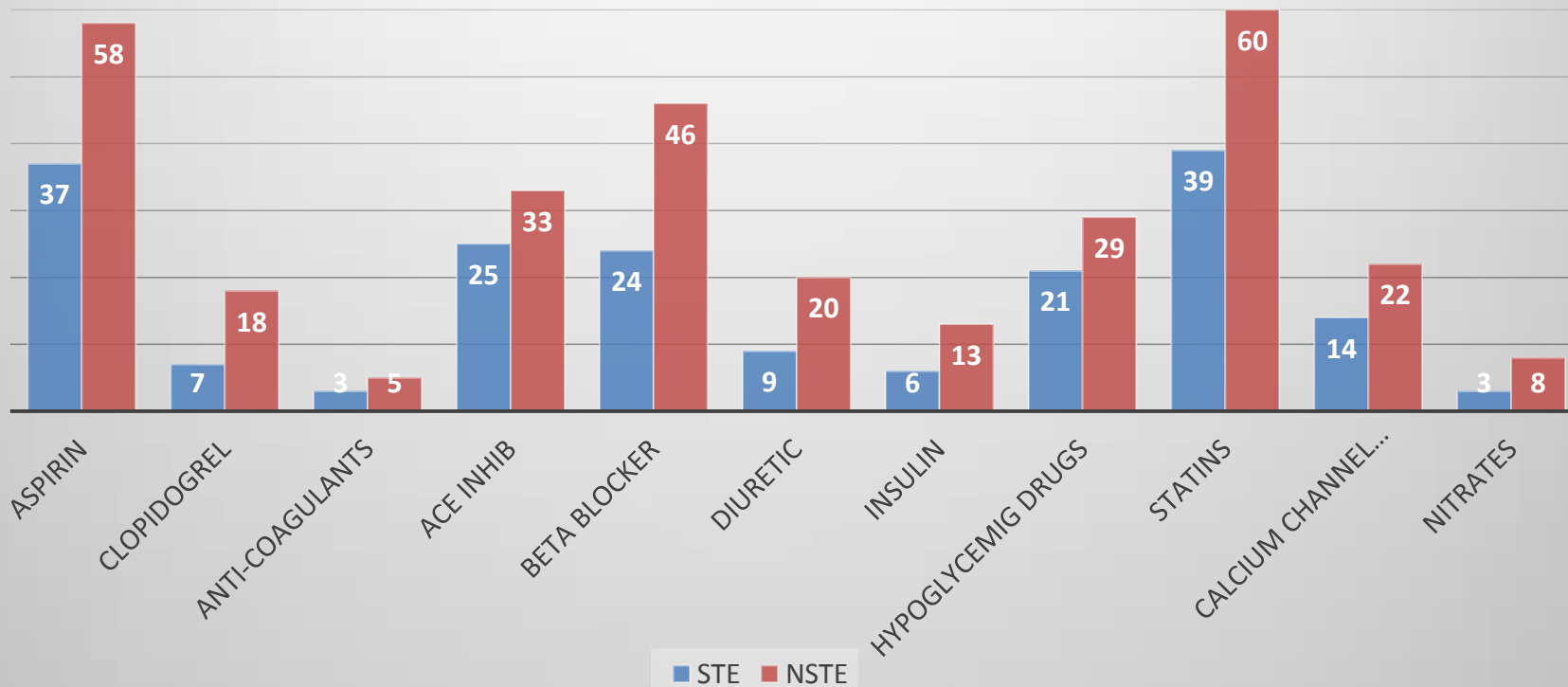




ACSIS 2013

Prior Chronic Treatment

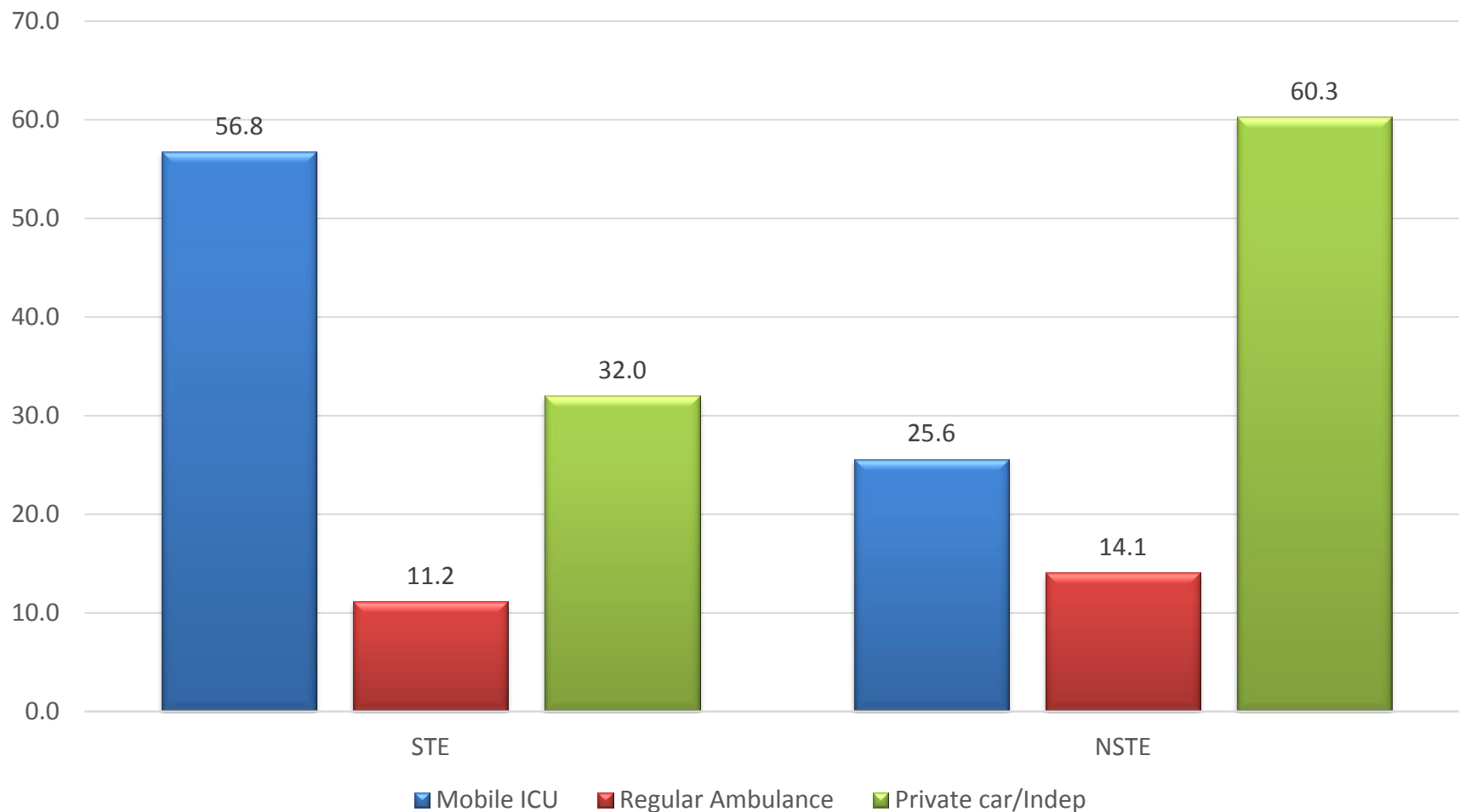
Percent





ACSIS 2013

Mode of Transportation by ECG on Admission

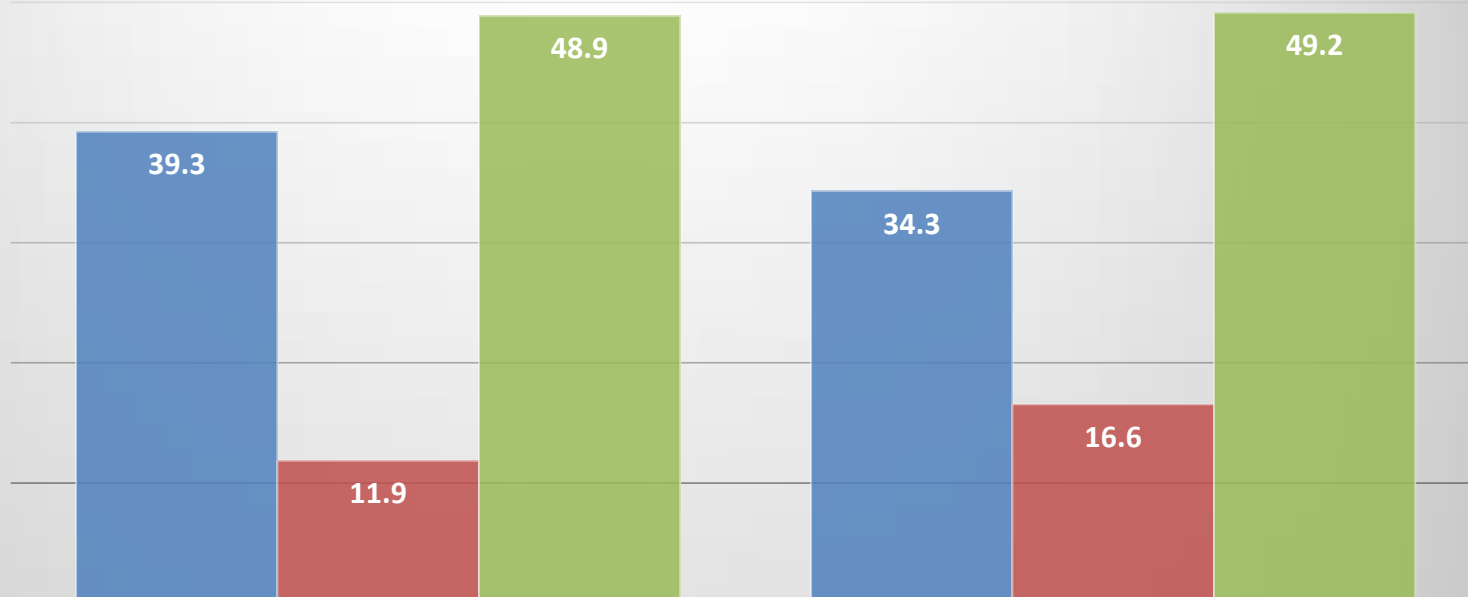




ACSIS 2013

Mode of Transportation by Sex

■ Mobile ICU ■ Regular Ambulance ■ Private car/Indep



■ Mobile ICU
■ Regular Ambulance
■ Private car/Indep

	Male	Female
Mobile ICU	39.3	34.3
Regular Ambulance	11.9	16.6
Private car/Indep	48.9	49.2



ACSIS 2013

Ward of first Arrival

First arrival	ST-E	Non ST-E
ER	66%	96%
CCU	20%	3%
Catheterization laboratory	14%	1%



ACSIS 2013

Ward of first Arrival by Sex

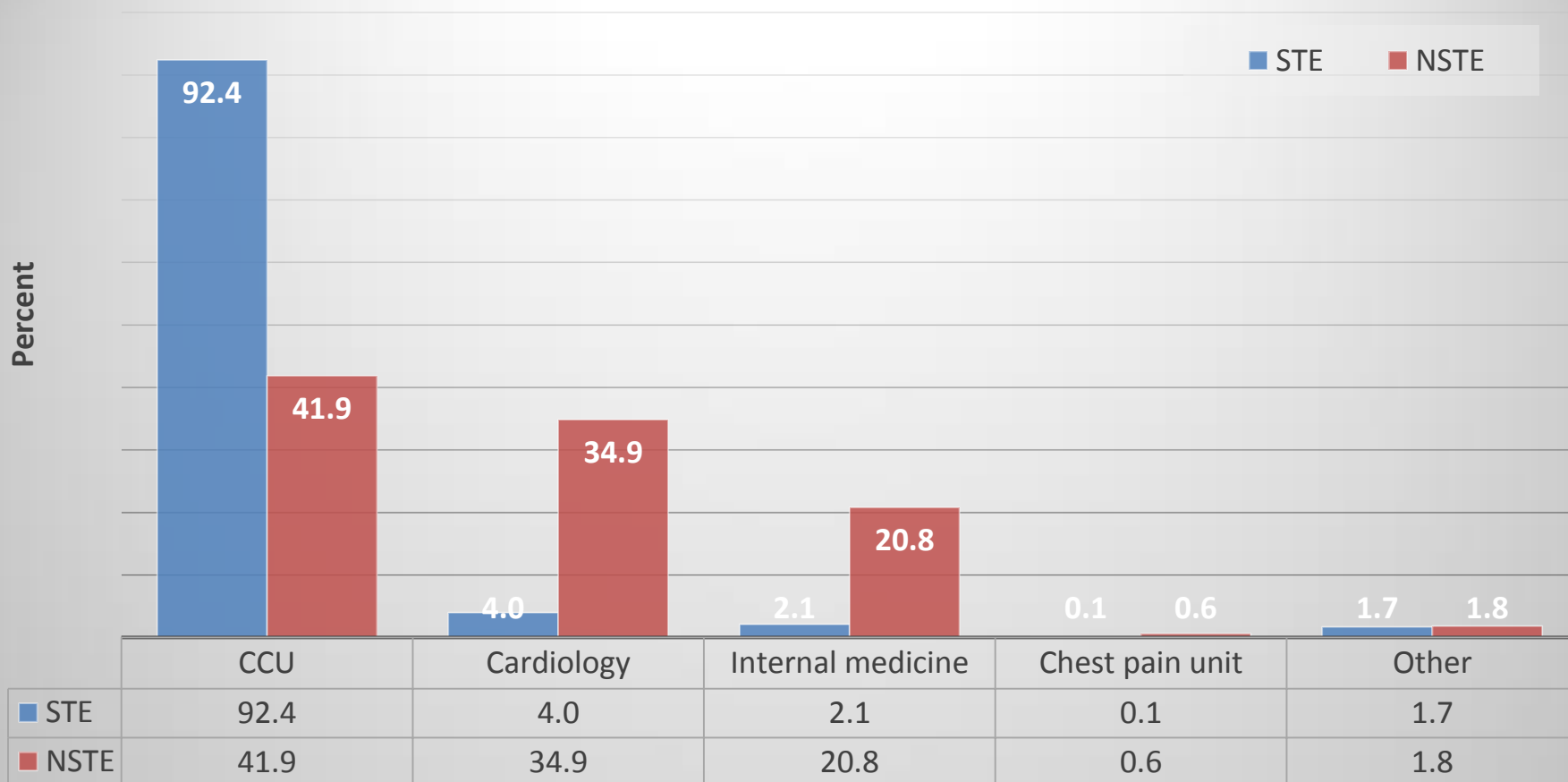
First arrival	Men	Women
ER	83%	89%
CCU	10%	8%
Catheterization laboratory	7%	3%



ACSIS 2013



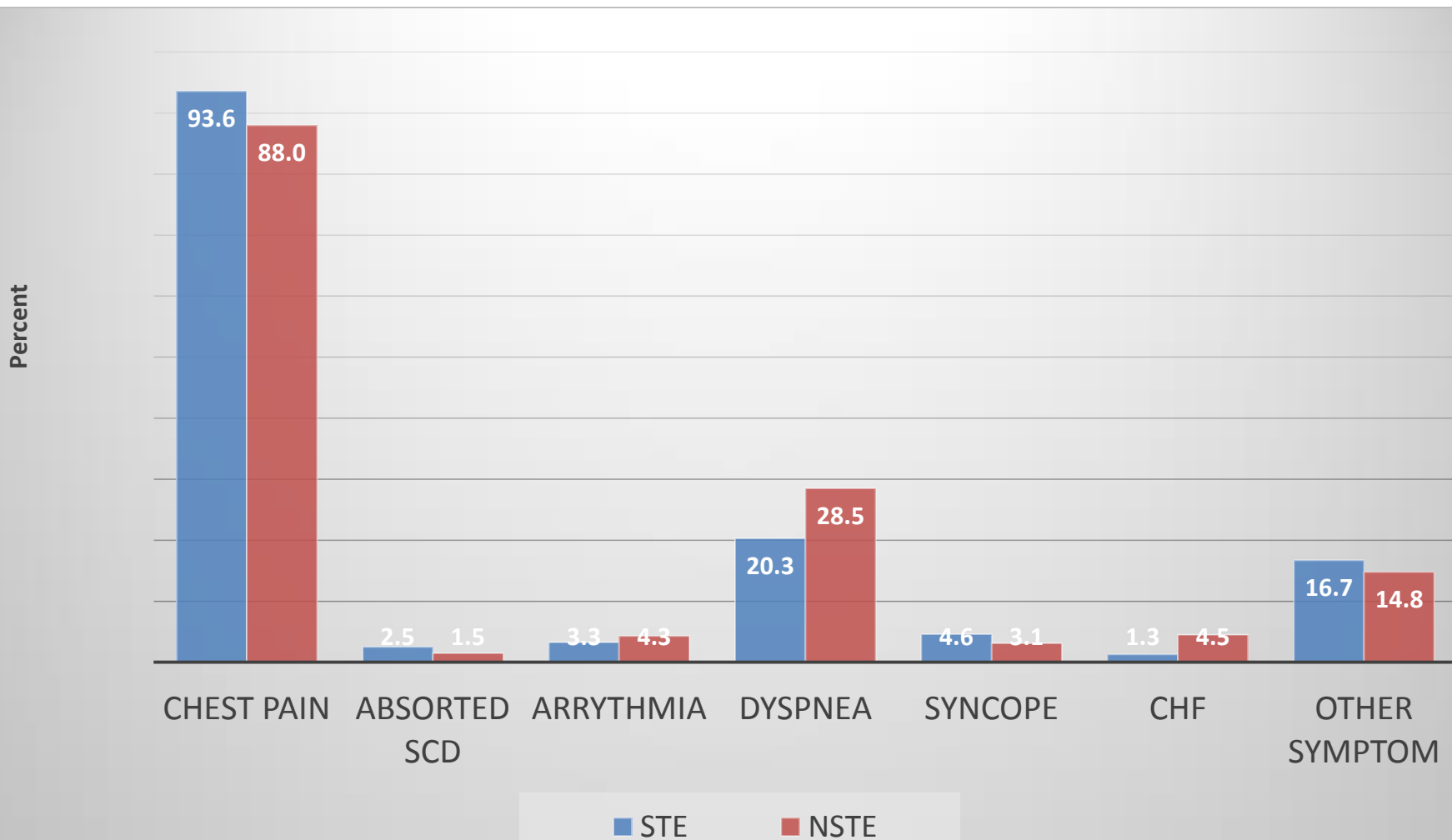
First ward of hospitalization





ACSIS 2013

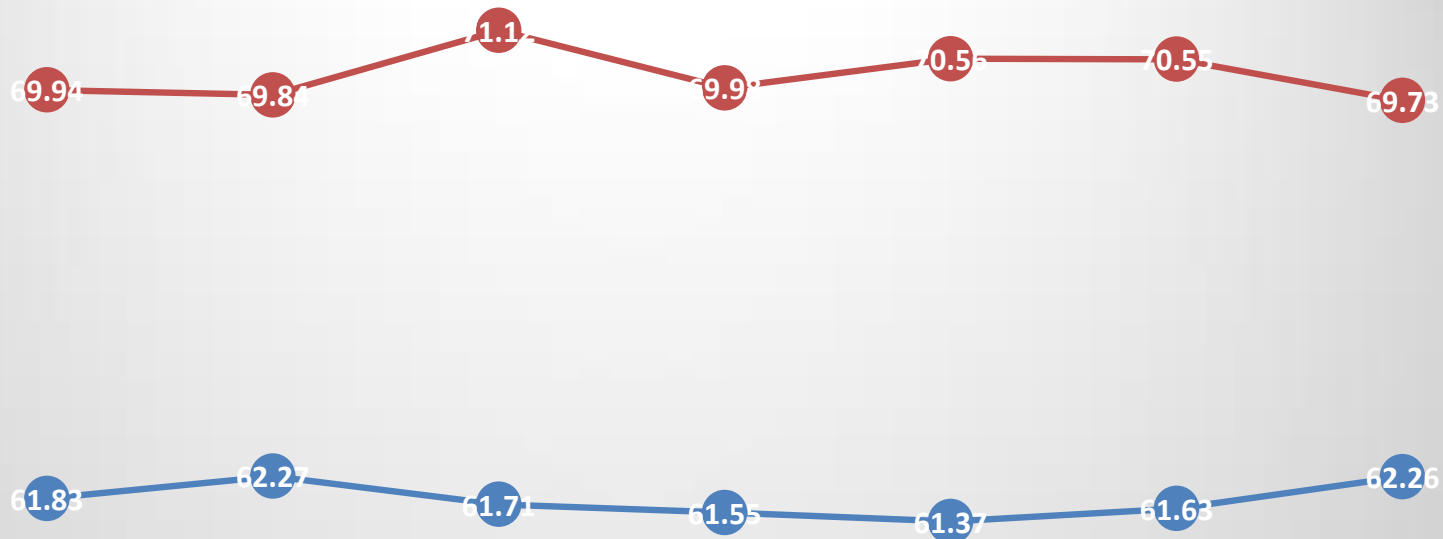
Presenting Symptoms at First Medical Contact





AC SIS Trends 2000-2013

Mean Age by Gender



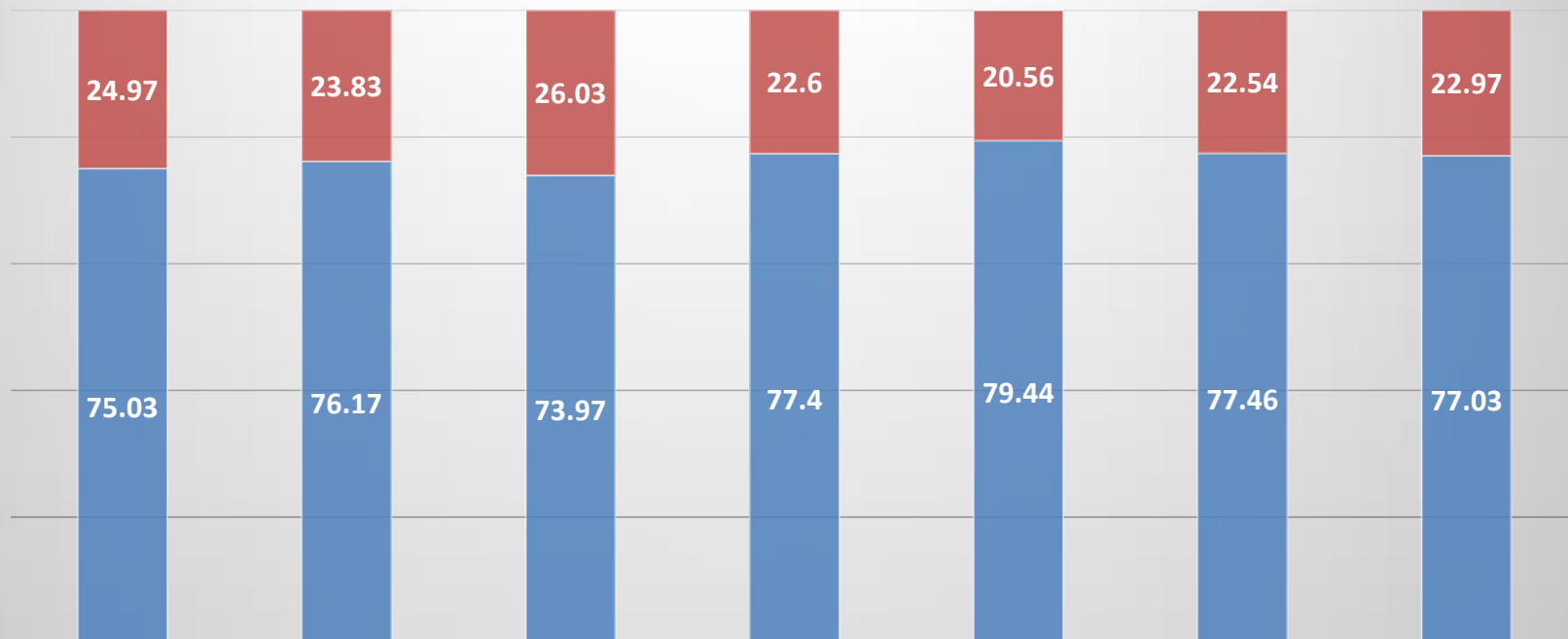
	2000	2002	2004	2006	2008	2010	2013
Male	61.83	62.27	61.71	61.55	61.37	61.63	62.26
Female	69.94	69.84	71.12	69.98	70.56	70.55	69.73

Male Female



AC SIS Trends 2000-2013

Gender Distribution



■ Female

24.97

23.83

26.03

22.6

20.56

22.54

22.97

■ Male

75.03

76.17

73.97

77.4

79.44

77.46

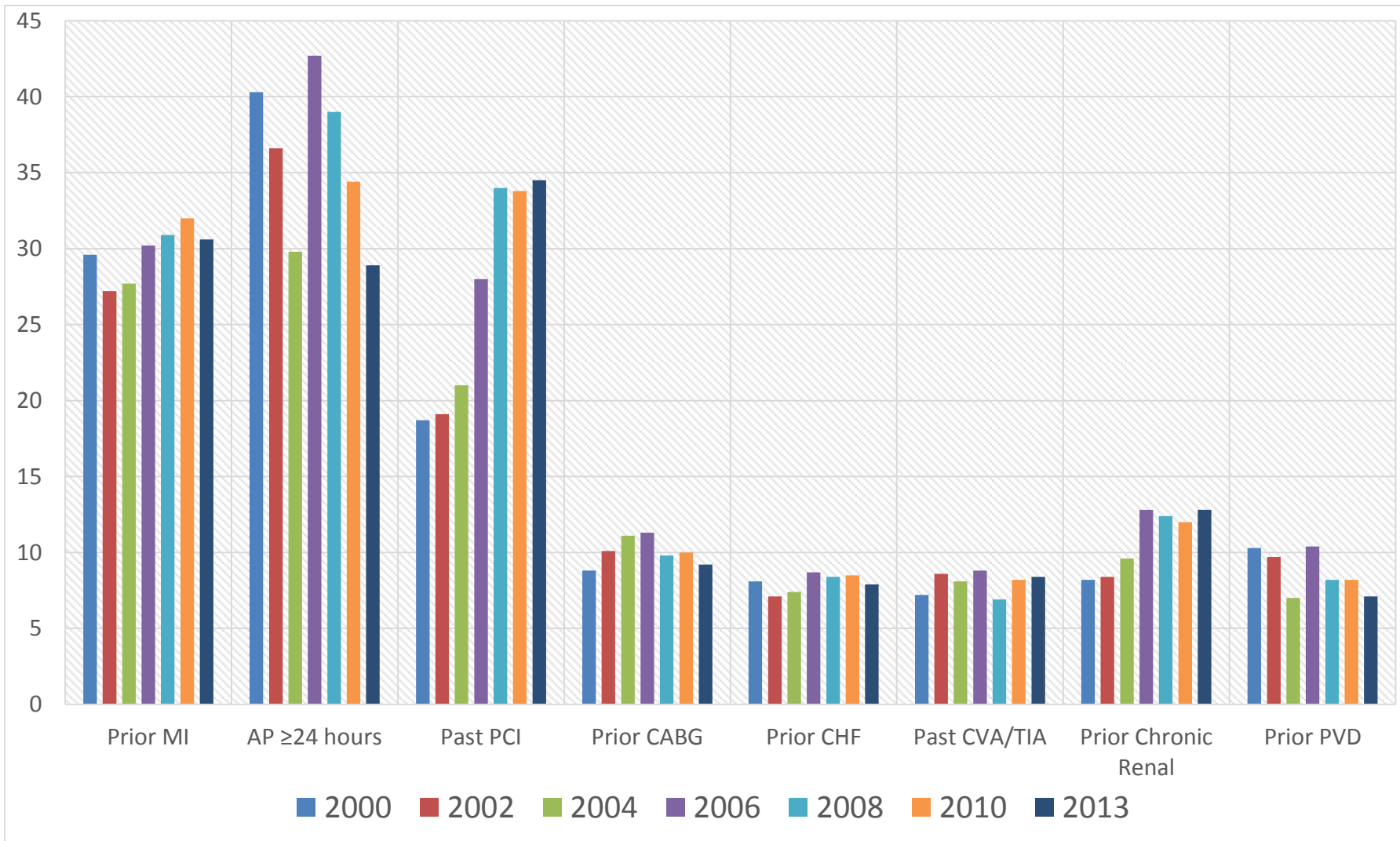
77.03

■ Male ■ Female



ACSIS Trends 2000-2013

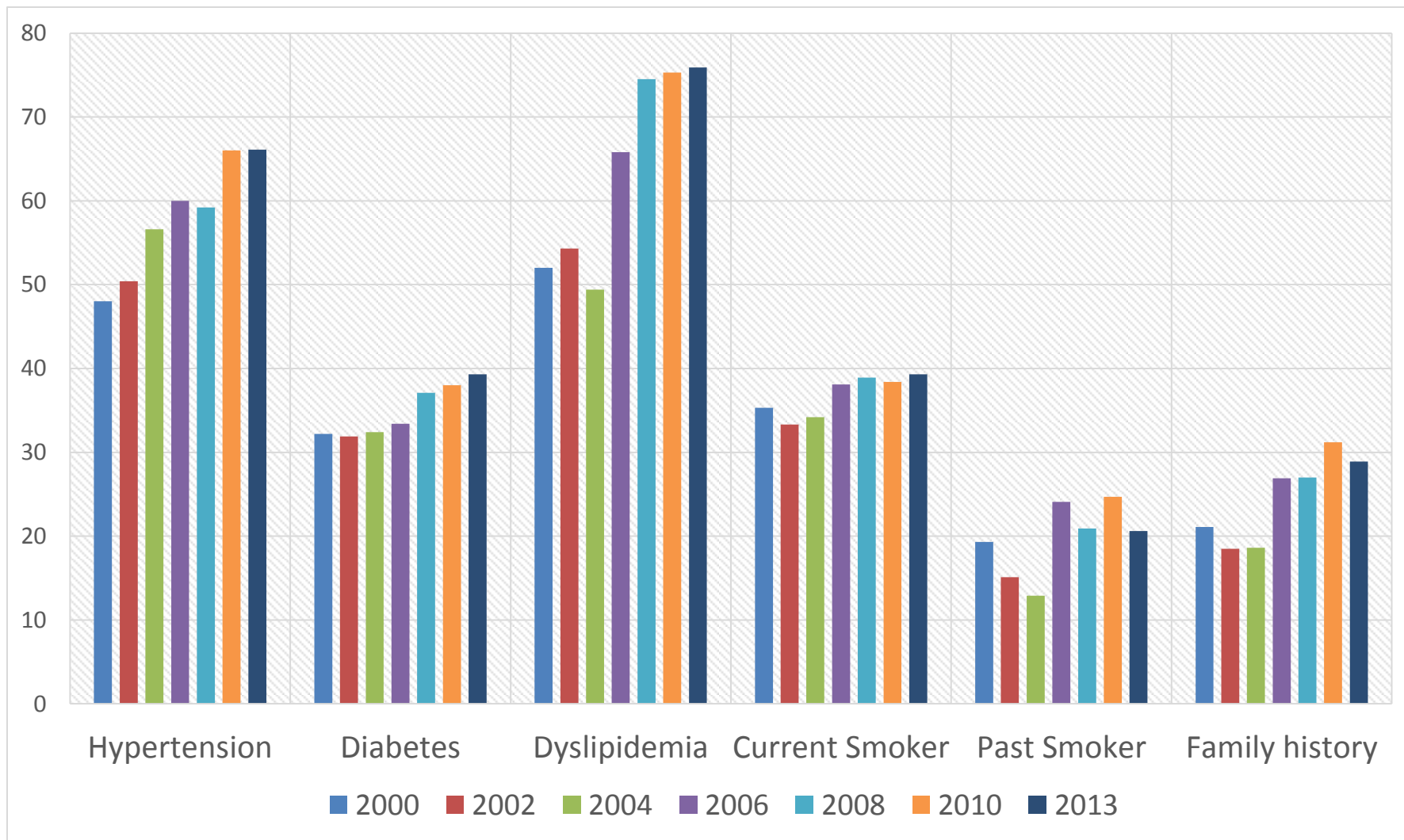
Cardiovascular History





ACSIS Trends 2000-2013

Risk Factors





ACSIS Trends 2000-2013

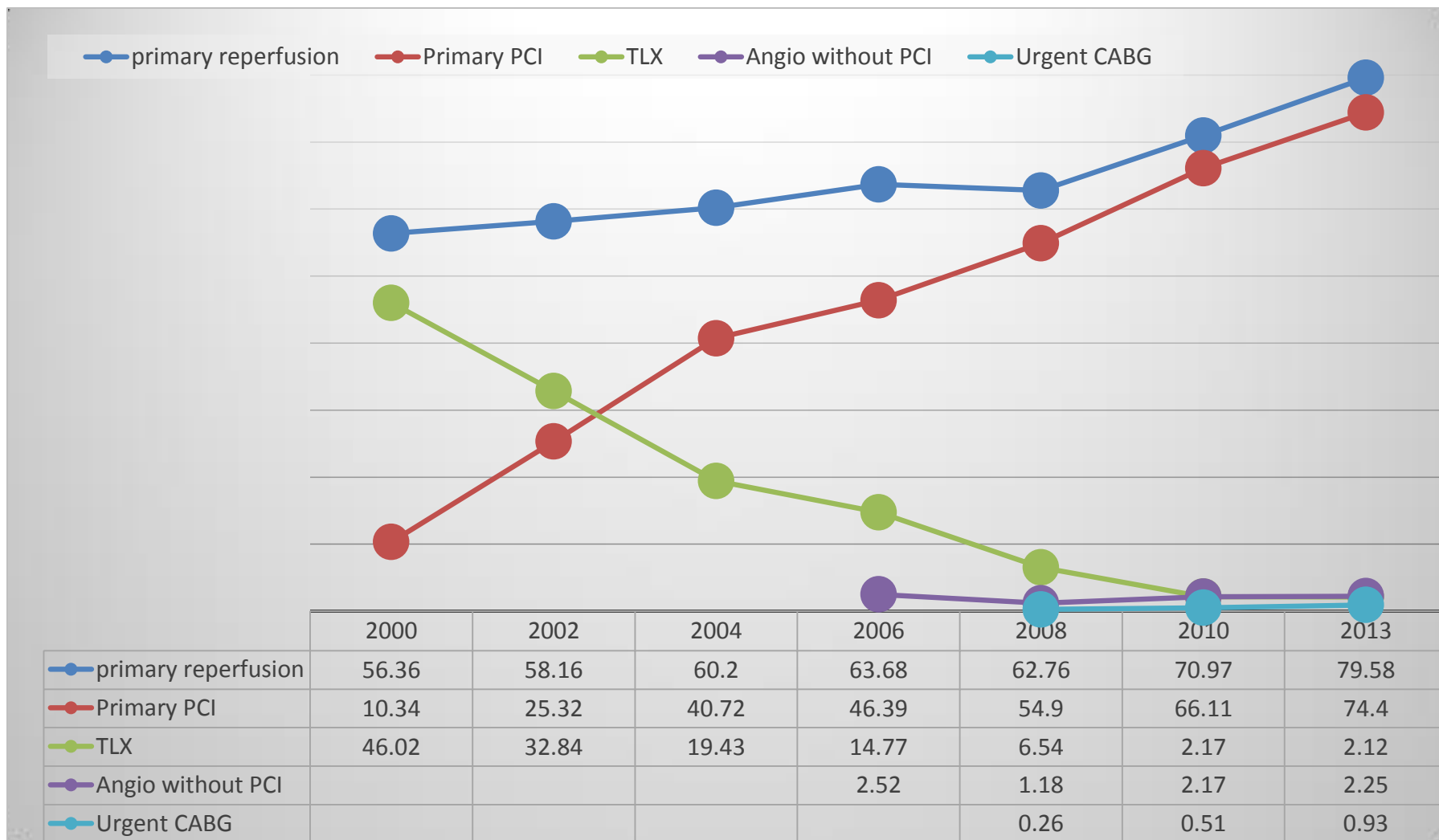
KILLIP Class

Killip	2000 (N=1791)	2002 (N=2038)	2004 (N=2087)	2006 (N=2075)	2008 (N=1746)	2010 (N=1779)	2013 (N=1822)
1	81.57	79.05	77.86	82.36	87.57	87.18	87.65
2	10.44	11.87	13.85	10.46	6.69	6.69	7.14
3	5.47	7.26	7.04	5.69	4.33	4.33	3.29
4	2.51	1.82	1.25	1.49	1.03	1.8	1.92



ACSIS Trends 2000-2013

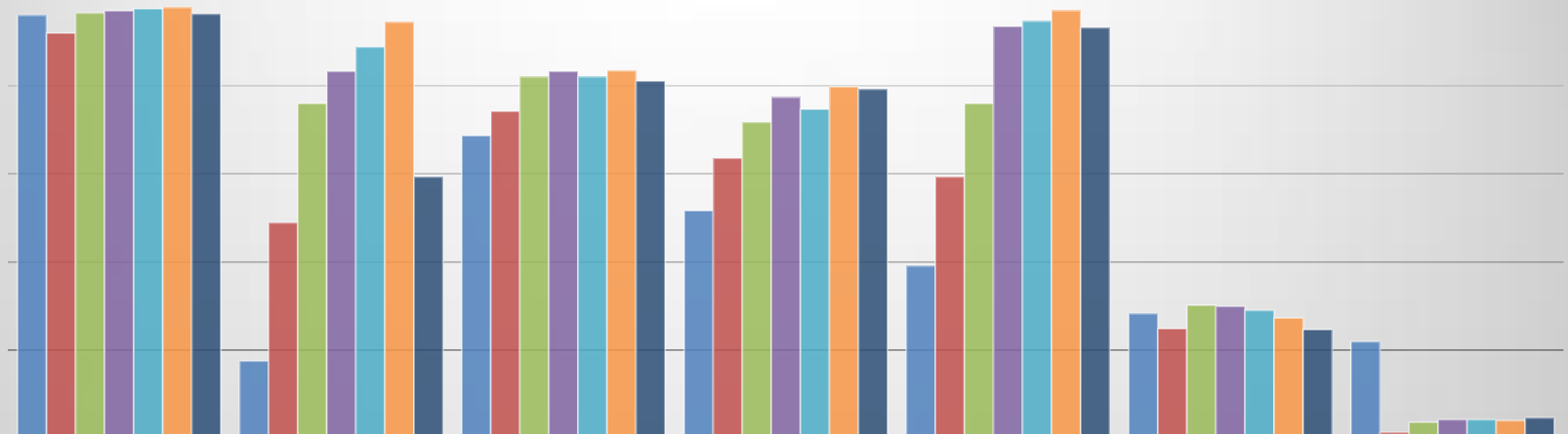
Primary reperfusion





ACSIS Trends 2000-2013

In-hospital Selected Medications



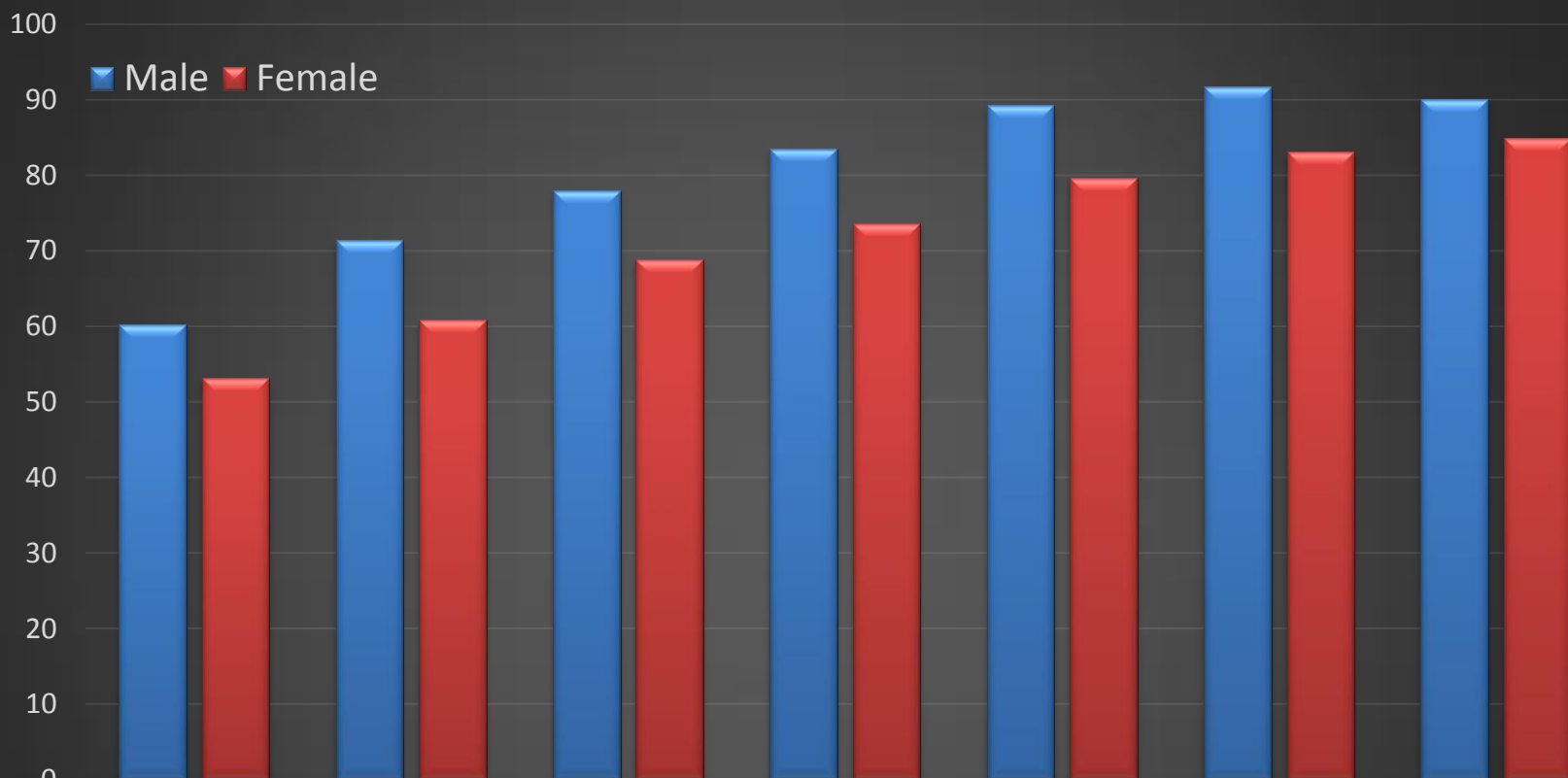
	Aspirin	Clopidogrel	B-Blockers	ACE/ARB	Lipid lowerin	Diuretic	Anticoag/Warf
■ 2000	96.0	17.5	68.7	51.7	39.1	28.3	21.9
■ 2002	92.0	48.9	74.2	63.6	59.3	24.9	1.3
■ 2004	96.5	76.0	82.1	71.7	76.0	30.2	3.6
■ 2006	97.0	83.3	83.3	77.4	93.5	29.9	4.2
■ 2008	97.5	88.8	82.1	74.7	94.7	29.0	4.2
■ 2010	97.8	94.5	83.4	79.8	97.1	27.3	4.0
■ 2013	96.3	59.3	81.1	79.2	93.2	24.7	4.6

■ 2000 ■ 2002 ■ 2004 ■ 2006 ■ 2008 ■ 2010 ■ 2013



ACSIS Trends 2000-2013

Any Angiography (in ccu/cardio)



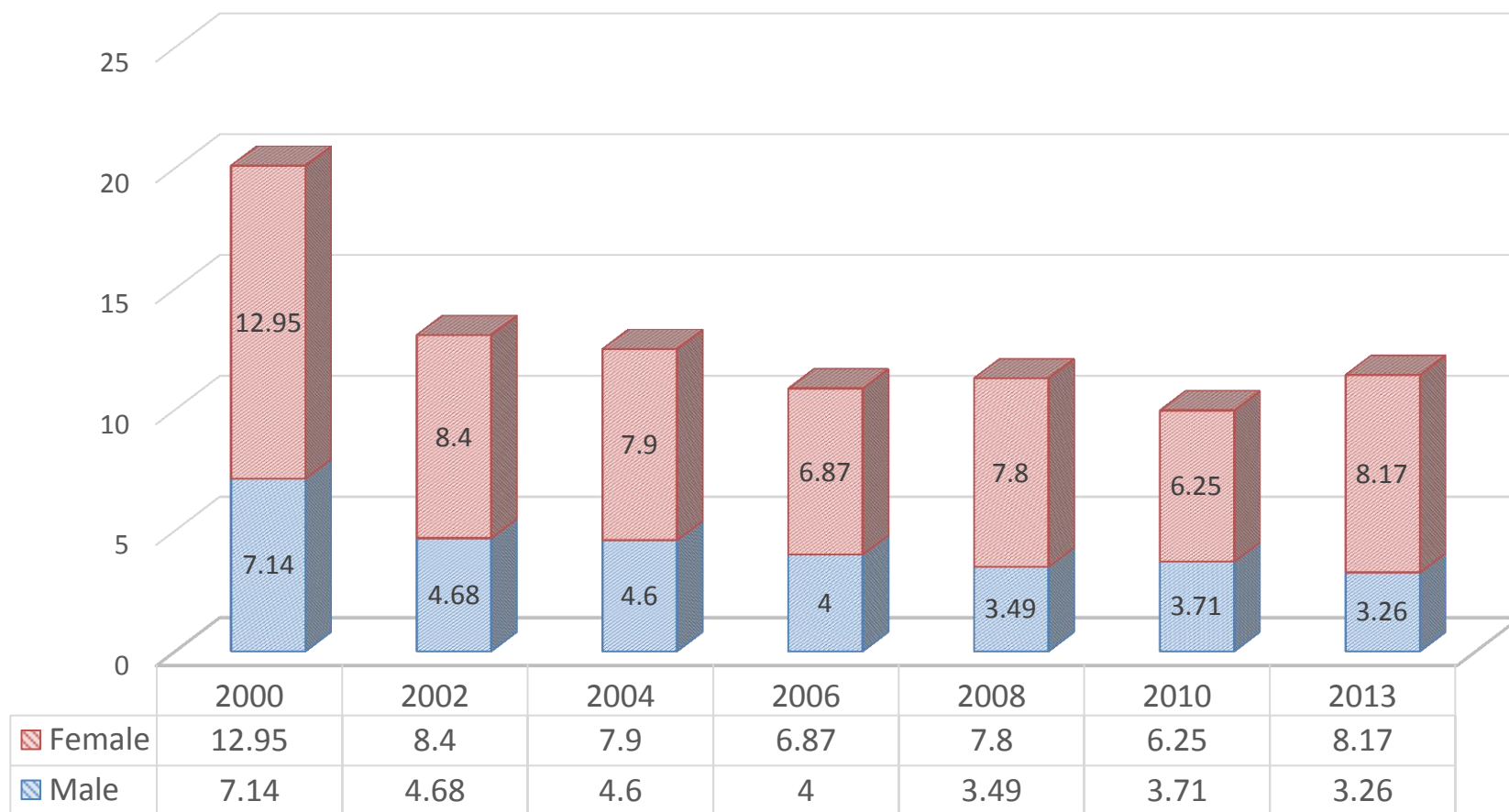
	2000	2002	2004	2006	2008	2010	2013
Male	60.18	71.35	77.92	83.44	89.26	91.65	90.08
Female	53.13	60.86	68.81	73.56	79.67	83.04	84.86



ACSIS Trends 2000-2013

30-day Death

Male Female

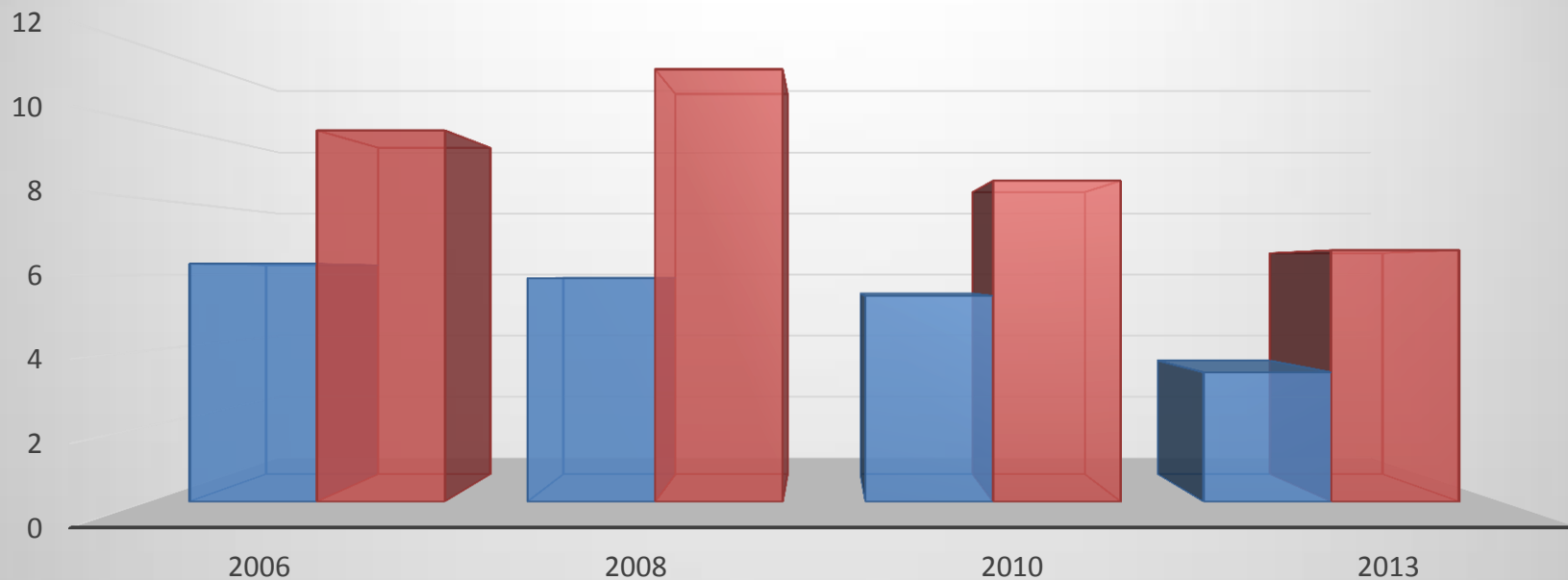




ACSIS Trends 2000-2013

30-day MACE (re-MI/stroke/death)

כותרת תרשים



	2006	2008	2010	2013
Male	6.29	5.91	5.44	3.42
Female	9.81	11.42	8.48	6.65



Thank You