

# Giant Proximal LAD Aneurysm

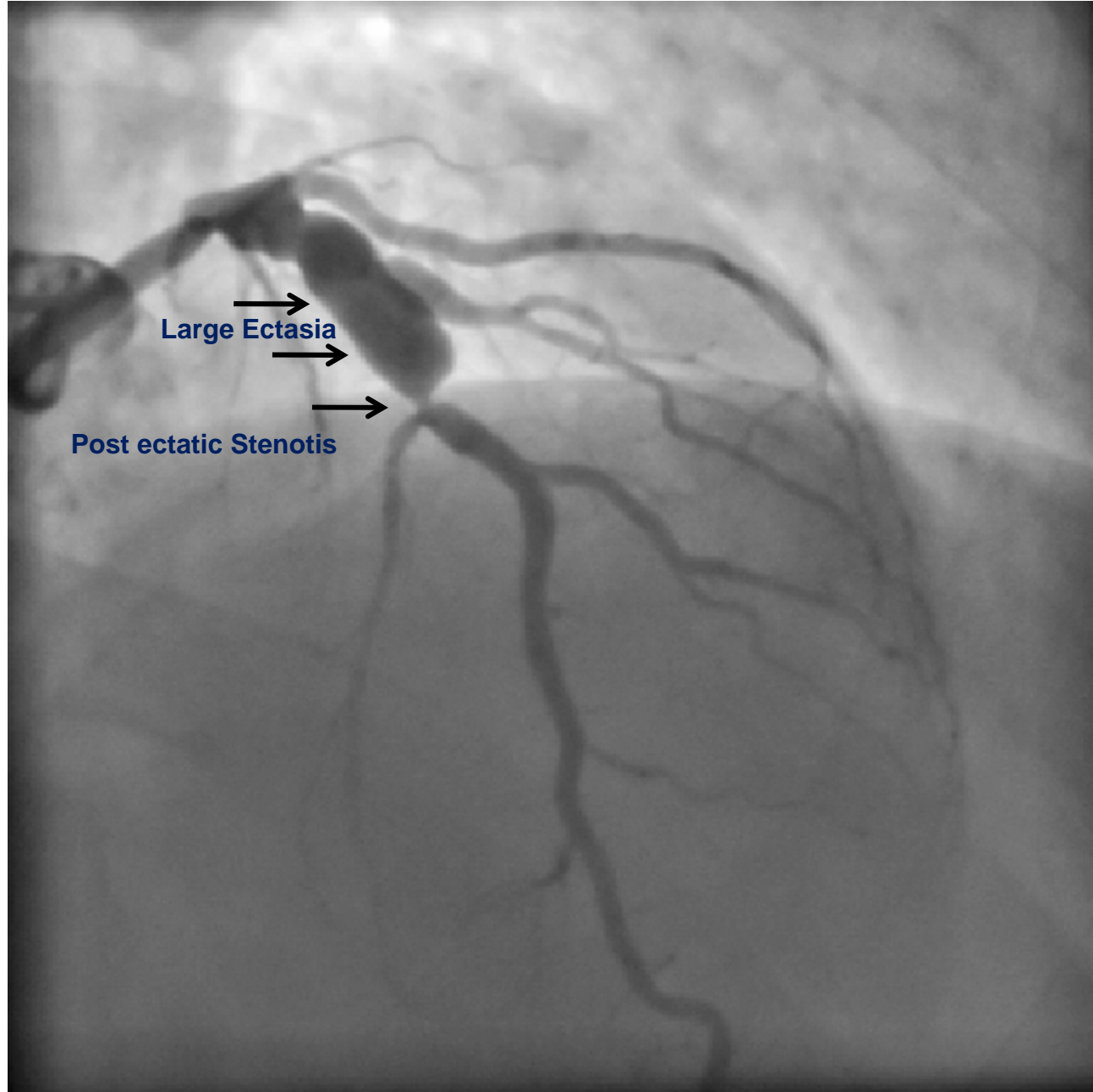
Prof. Ran Kornowski  
Hana Vaknin-Assa MD

Rabin Medical Center



# Proximal LAD – Giant Aneurysm

- L.I. 55 year old male
- Dyslipidemia, positive Family Hx, Former smoker
- Effort Angina
- Coronary Cath: Single CAD, Proximal LAD ectasia and post stentic dilatation



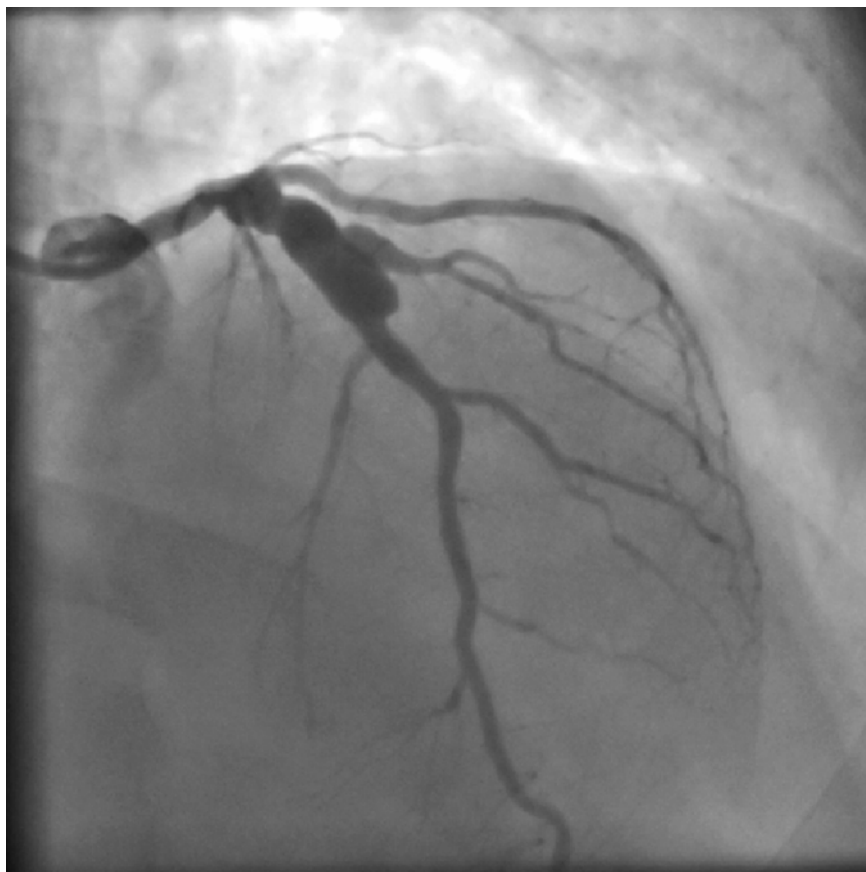
Large Ectasia

Post ectatic Stenosis

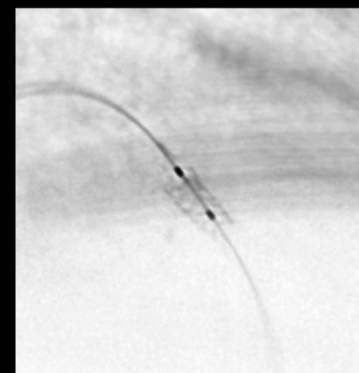
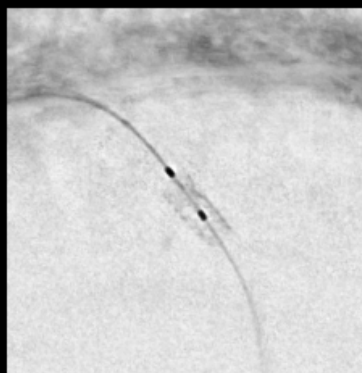
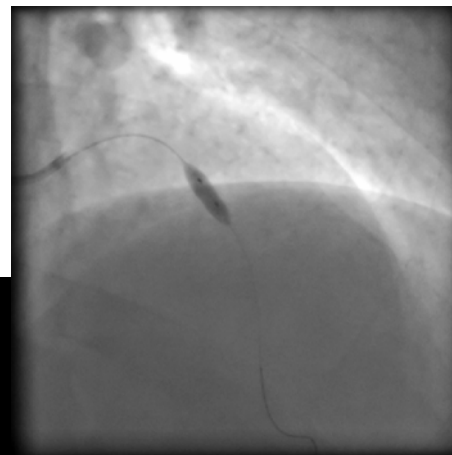
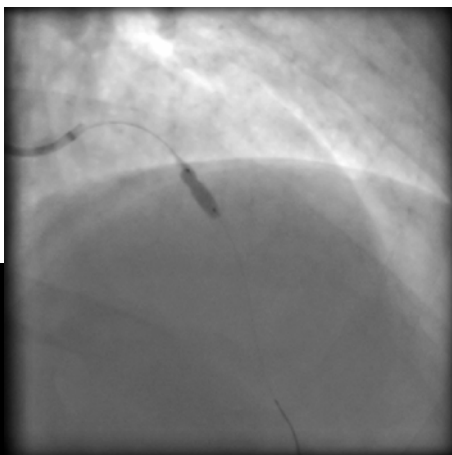
# Treatment Modalities

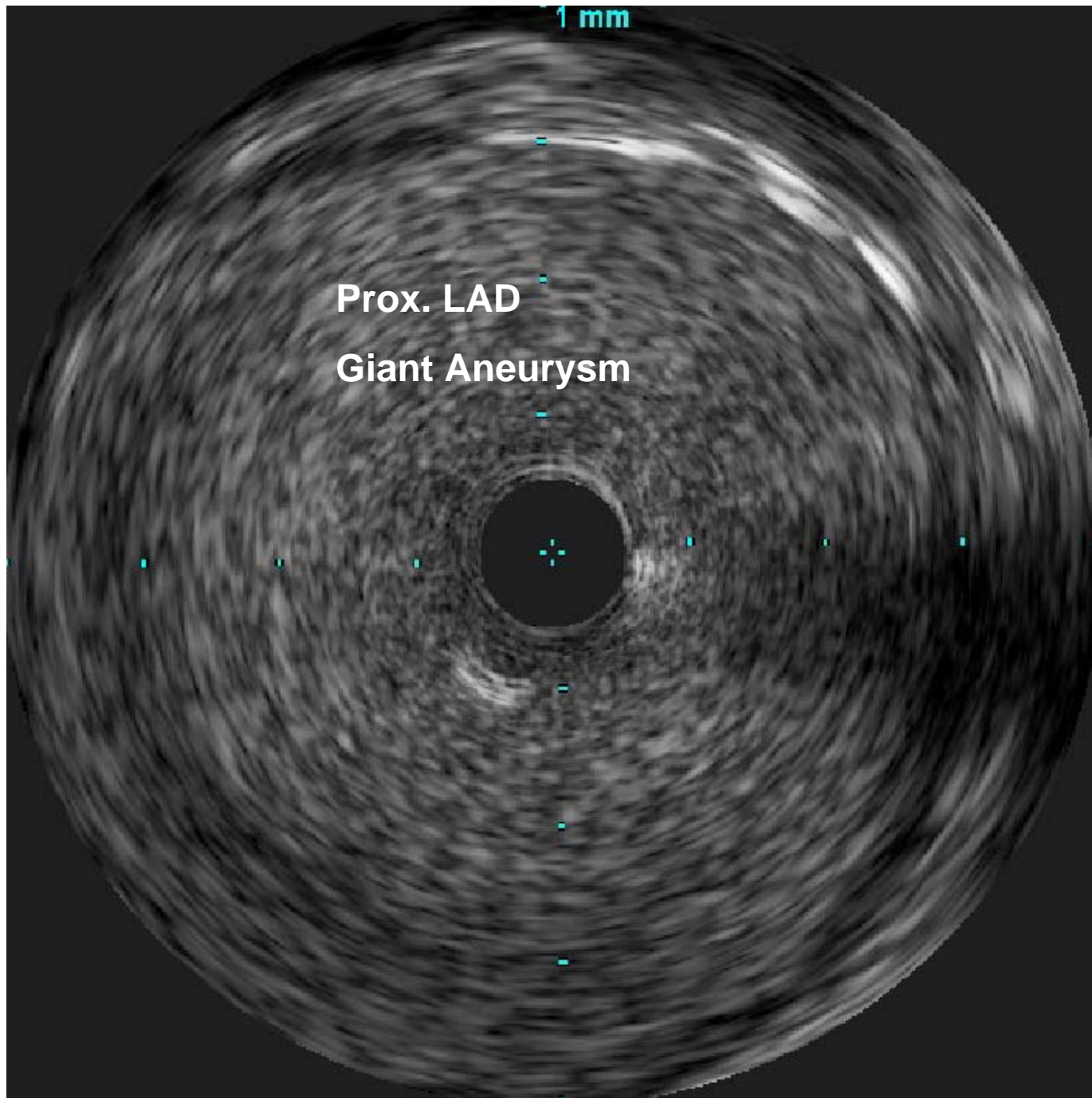
- PCI of LAD
  - BSM or DES?
  - IVUS Guided PCI
- LIMA to LAD?
- Anti-thrombotic management

# Direct Stenting of Mid LAD using BMS



# Final Result controlled by 'STENTOP' stent imaging software



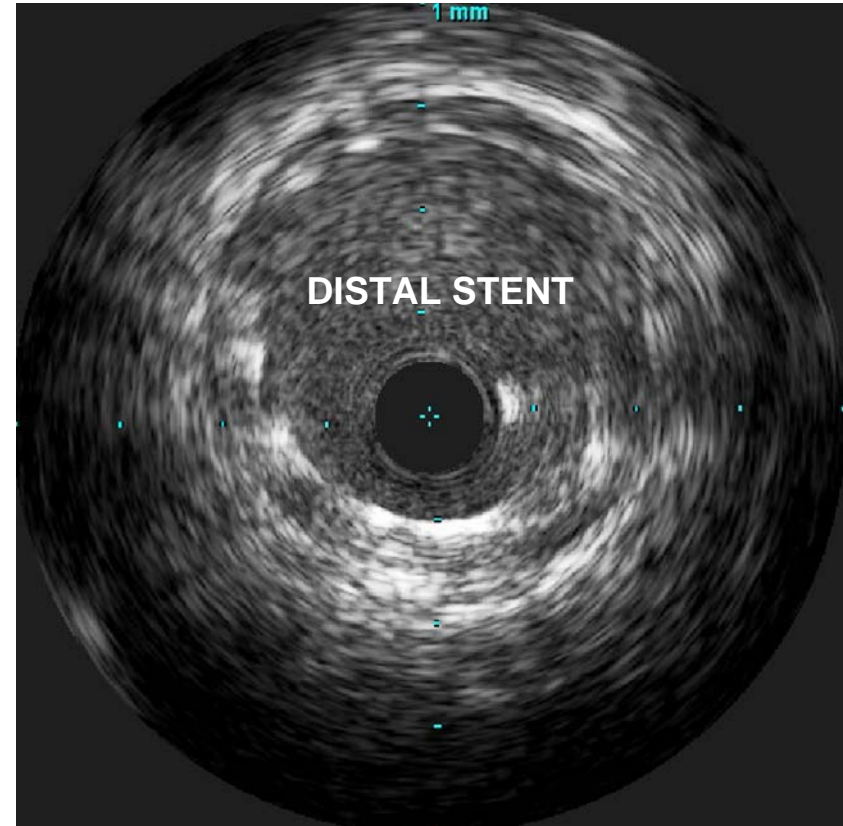
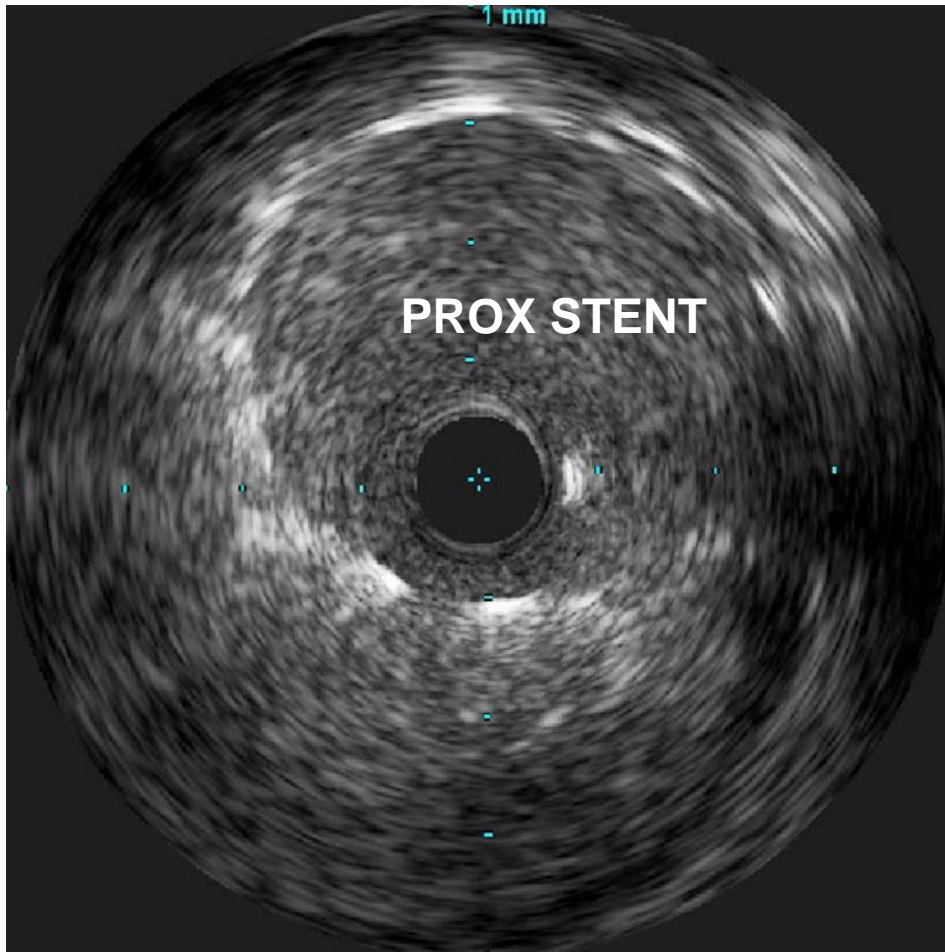


Prox. LAD

Giant Aneurysm

1 mm

....And by IVUS





# Post procedure management

- Clopidogrel for one year @75 mg per day
- Angiographic Follow Up ?
- Platelet function studies – normal response to ASA 100 mg and clopidogrel 75 mg daily