

The First Israeli Trans- Femoral Implantation of CoreValve 31 mm

Amit Segev

Victor Guetta

Chaim Sheba Medical Center



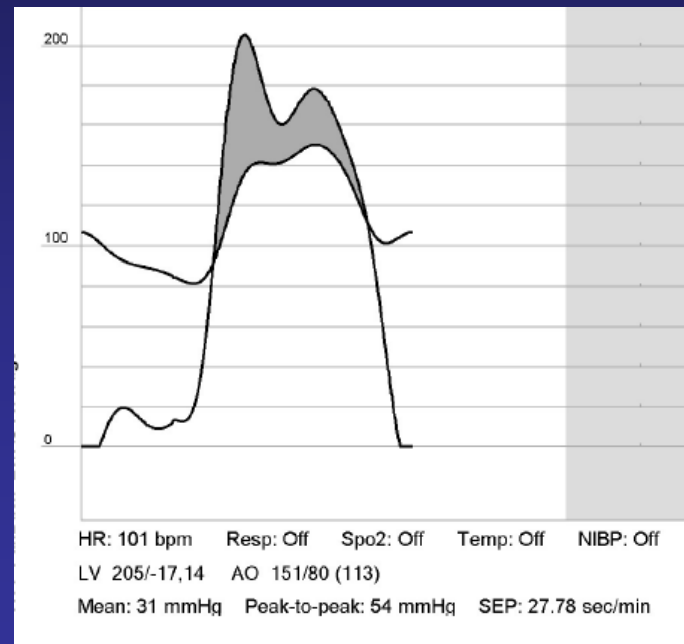
Case Presentation

- **59-year old male**
- **Scleroderma**
 - **Severe restrictive lung disease for many years**
 - **Skin involvement**
- **Moderate to severe aortic stenosis**
- **Exacerbation of dyspnea to NYHA FC III-IV**
- **Echo – LVEF 60%, SPAP-not measurable, AVA – 0.9**

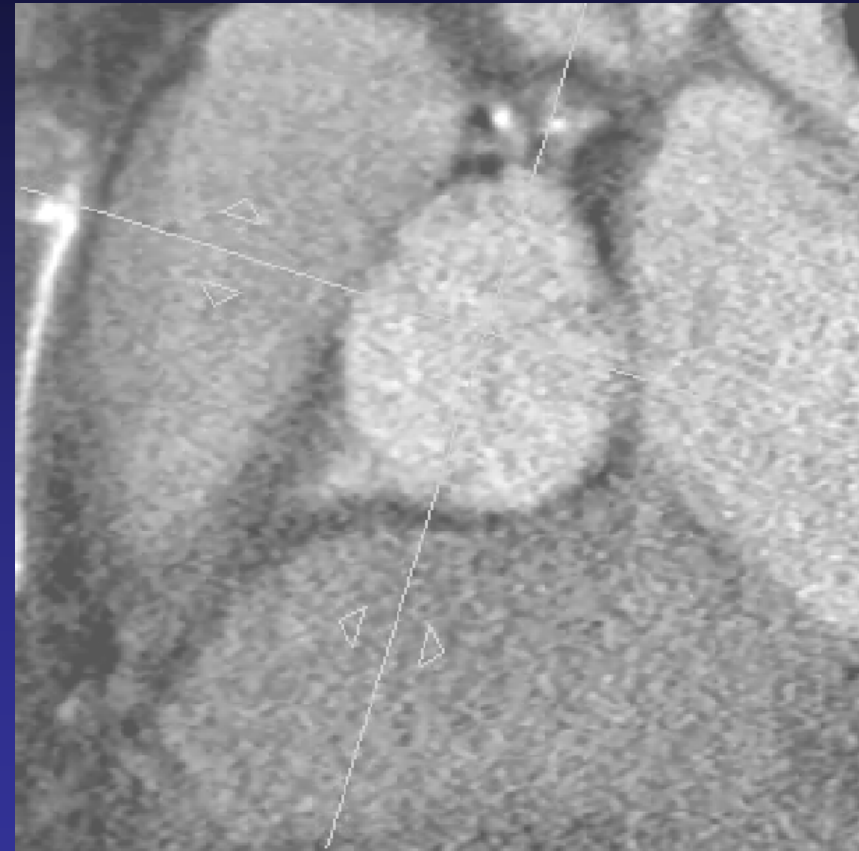
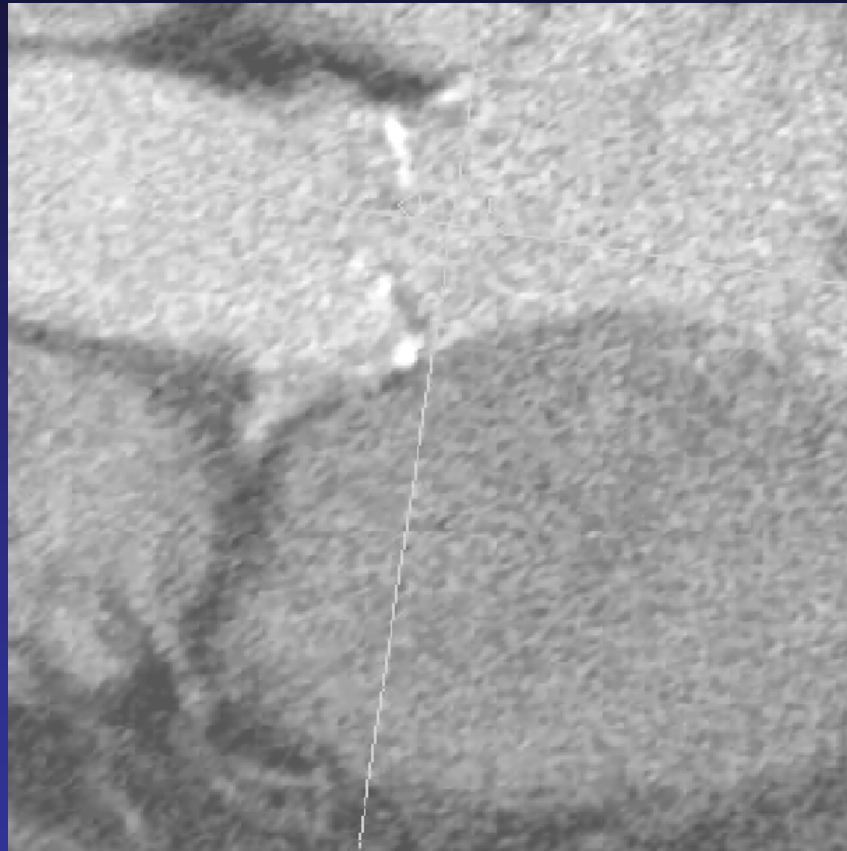


Cardiac Hemodynamics

- Normal coronary arteries
- PA – 64/18 (36)
- Mean PCWP – 18

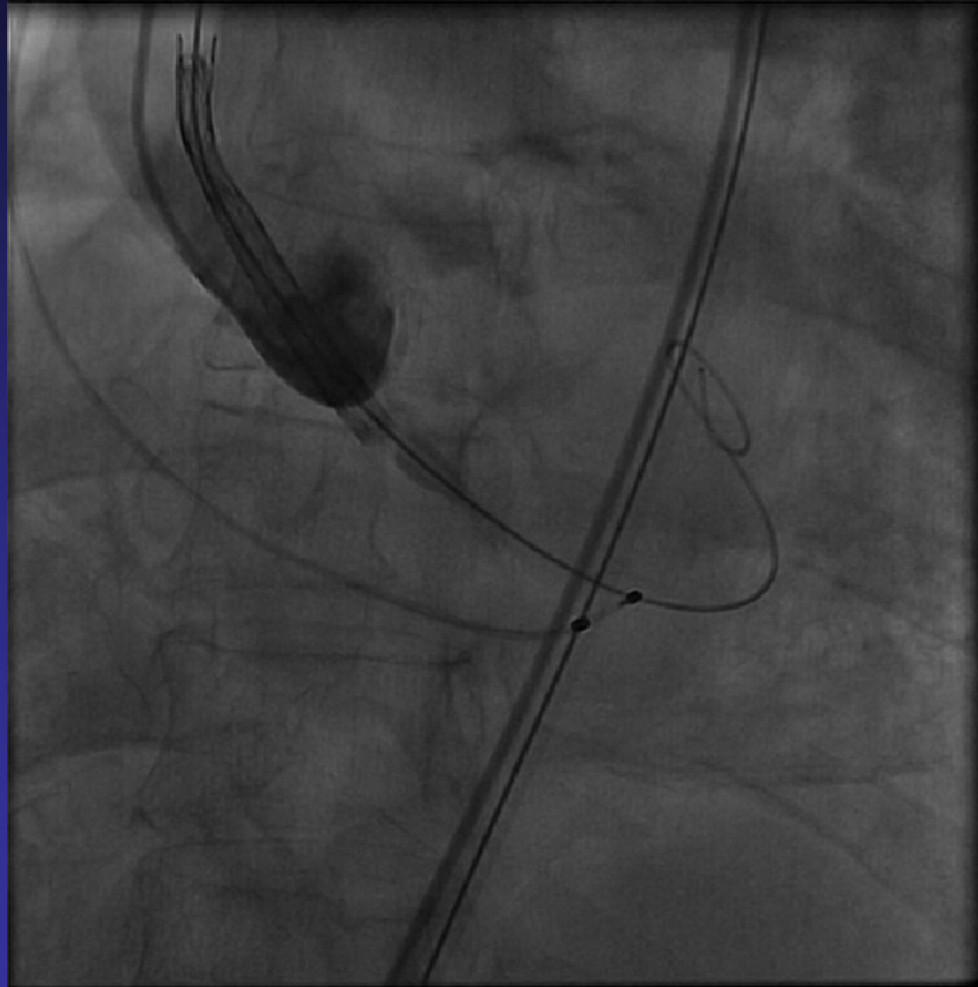


CT Measurements – Annulus of 28-29mm

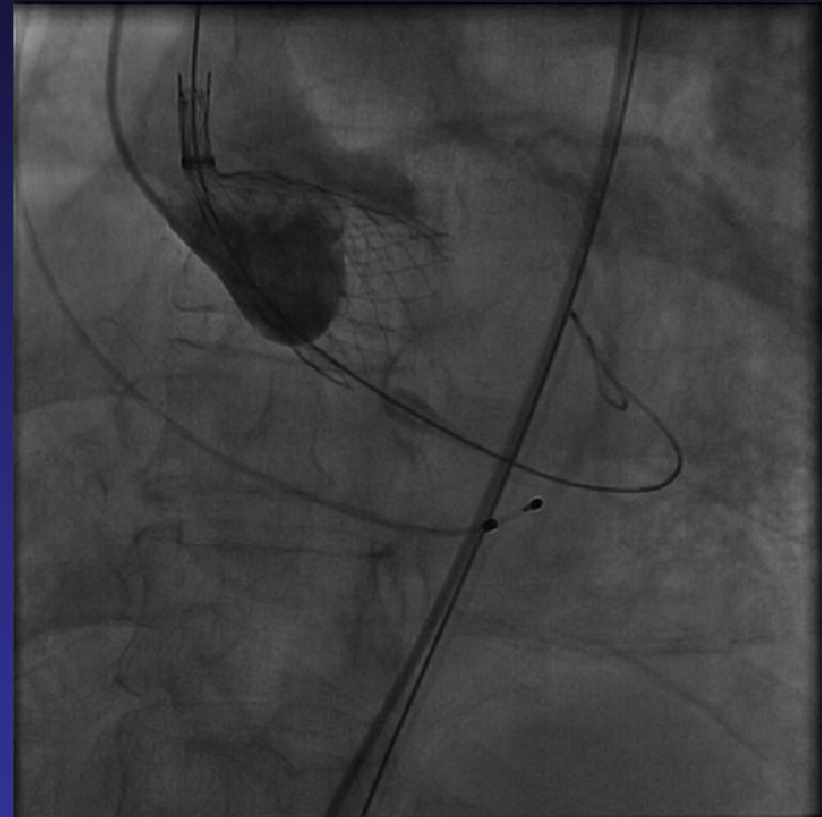
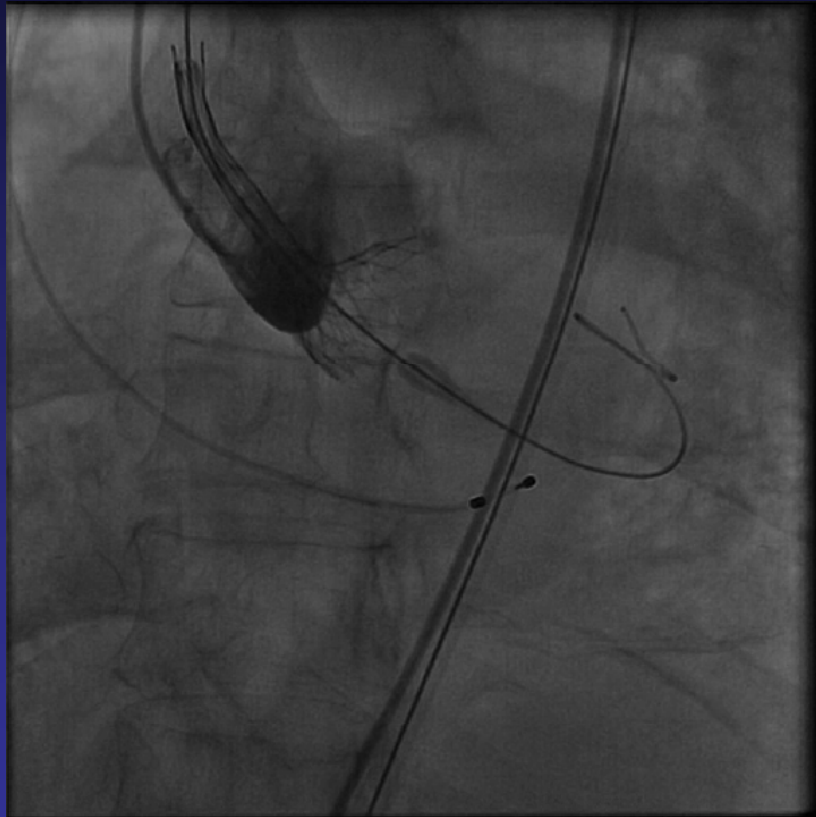


Procedure

Easy delivery via 18FR Sheath

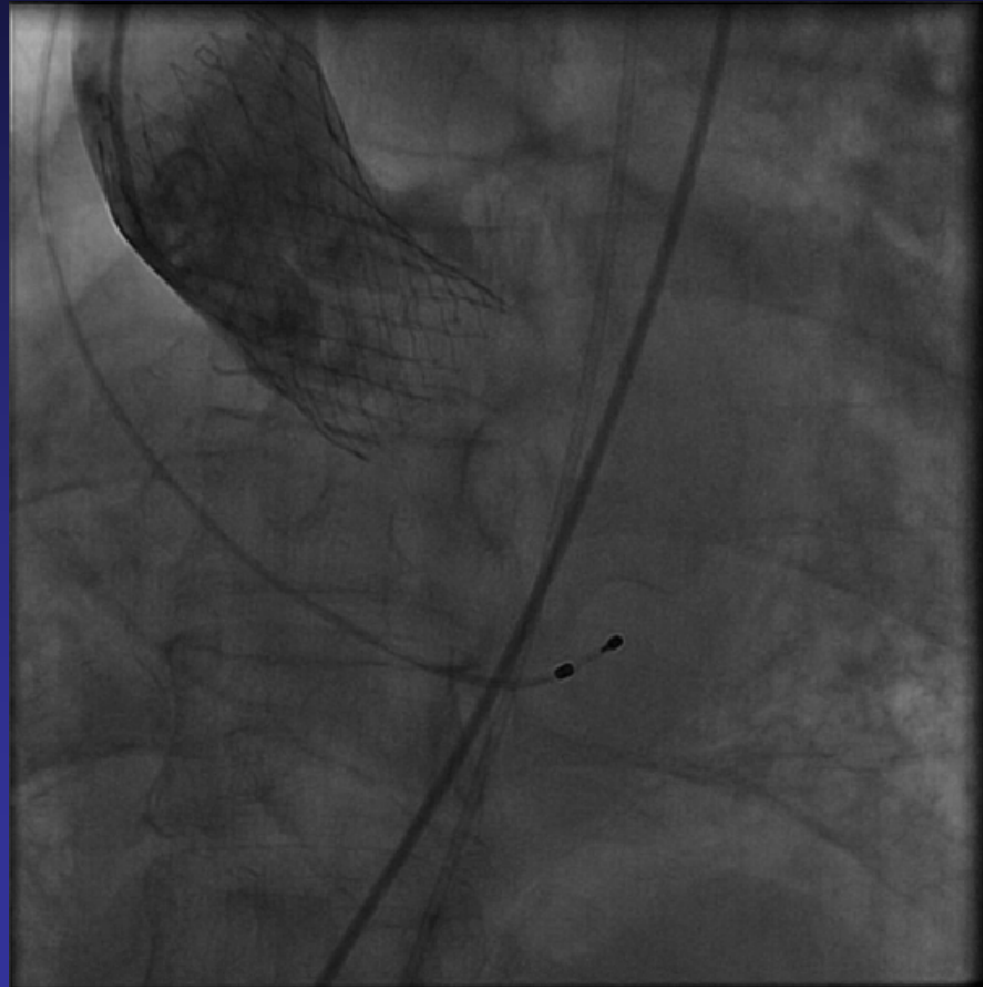


Stages of Implantation (Slightly low)



Final Result

Valve is shortened when fully deployed and also pulled back during release



NO AR!!!



Excellent Hemodynamics

