

Atrial Tachycardia

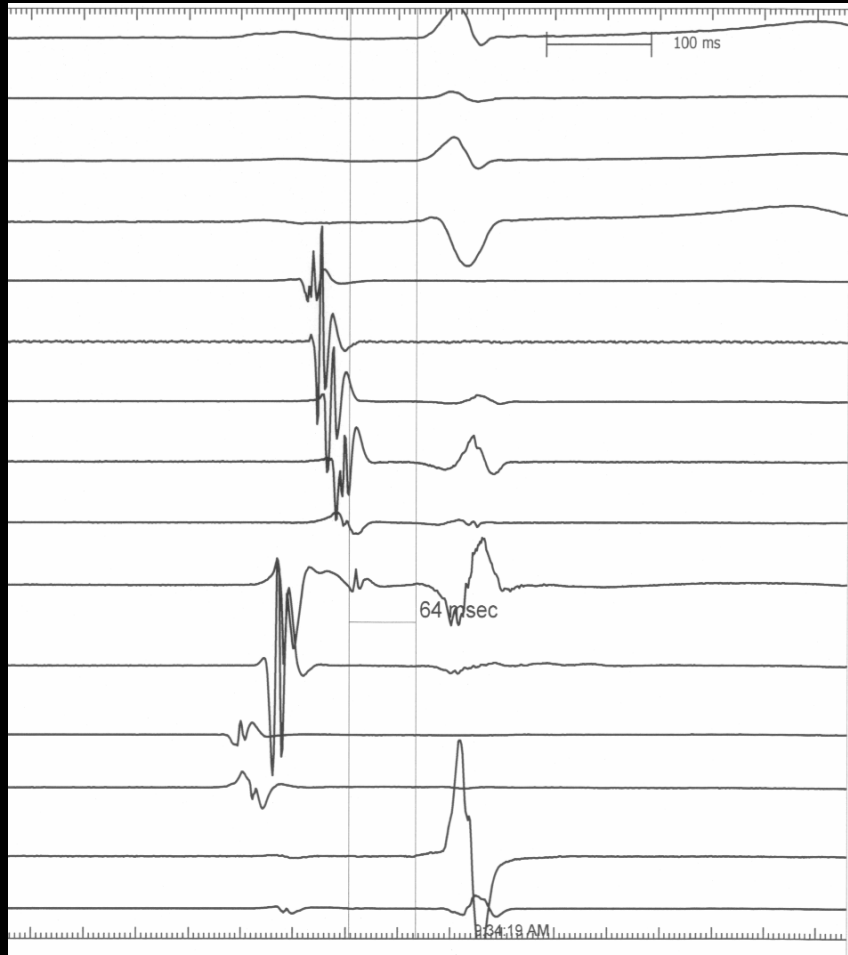
Cardiac Electrophysiology

Rabin Medical Center

Background

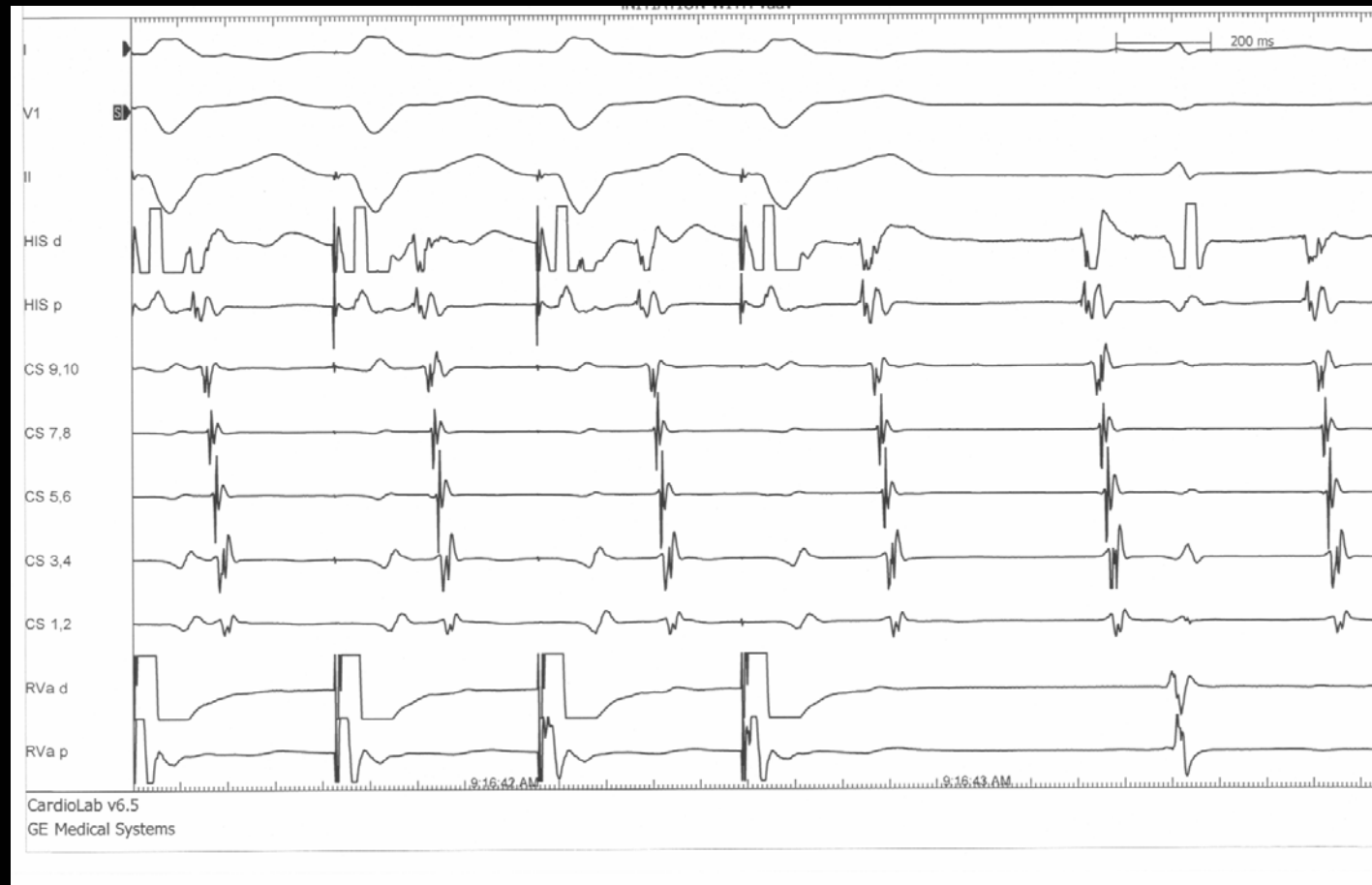
- Sixty Three year old man
- DM, HTN,
- Ten years- recurrent Palpitations
- SVT on different ECGs (un available)
- Not controlled on Beta Blockers

EPS



- Normal Baseline Measurements

Ventricular Pacing



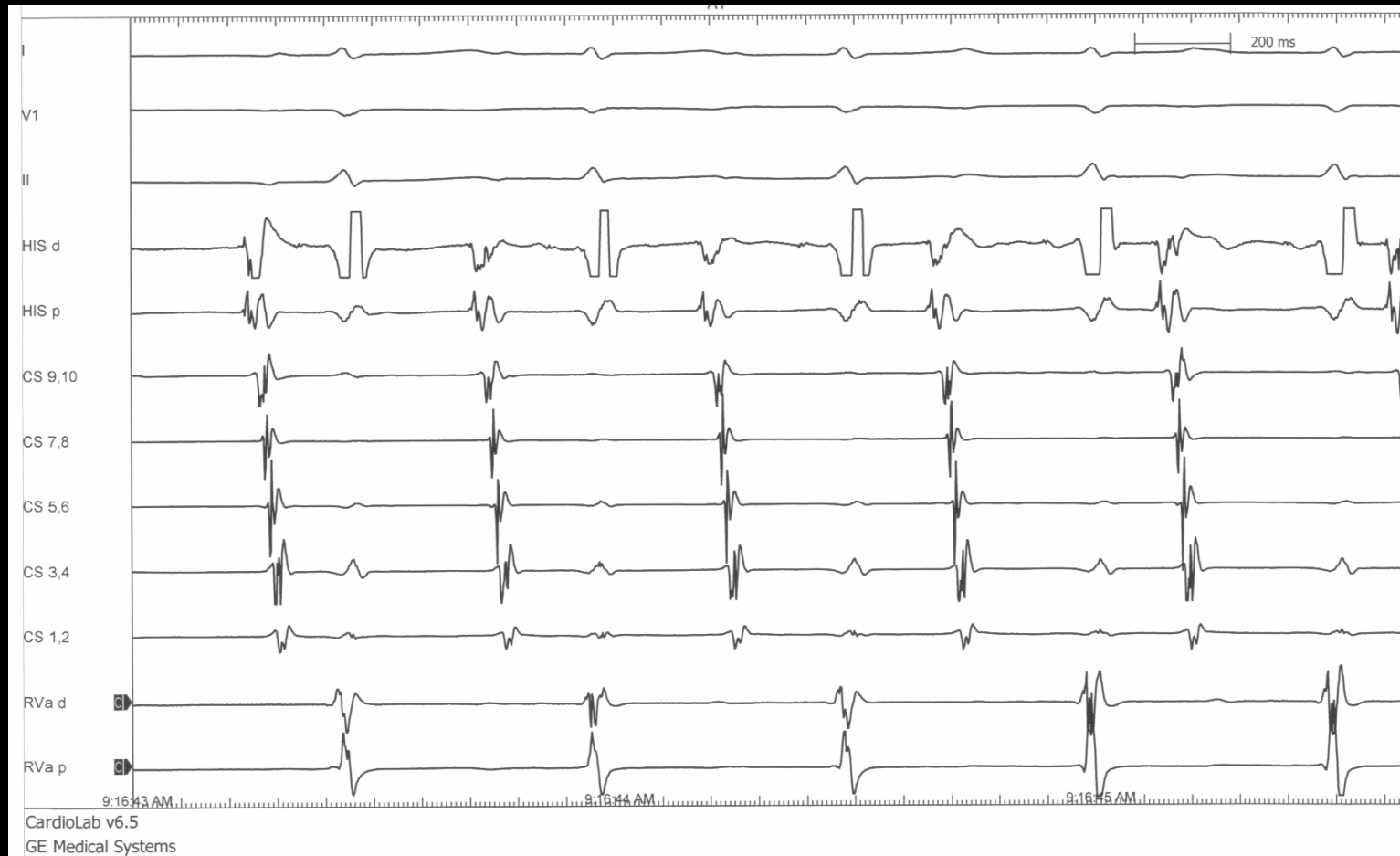
Initiation of SVT with V pacing – what's the diagnosis?

Ventricular Pacing



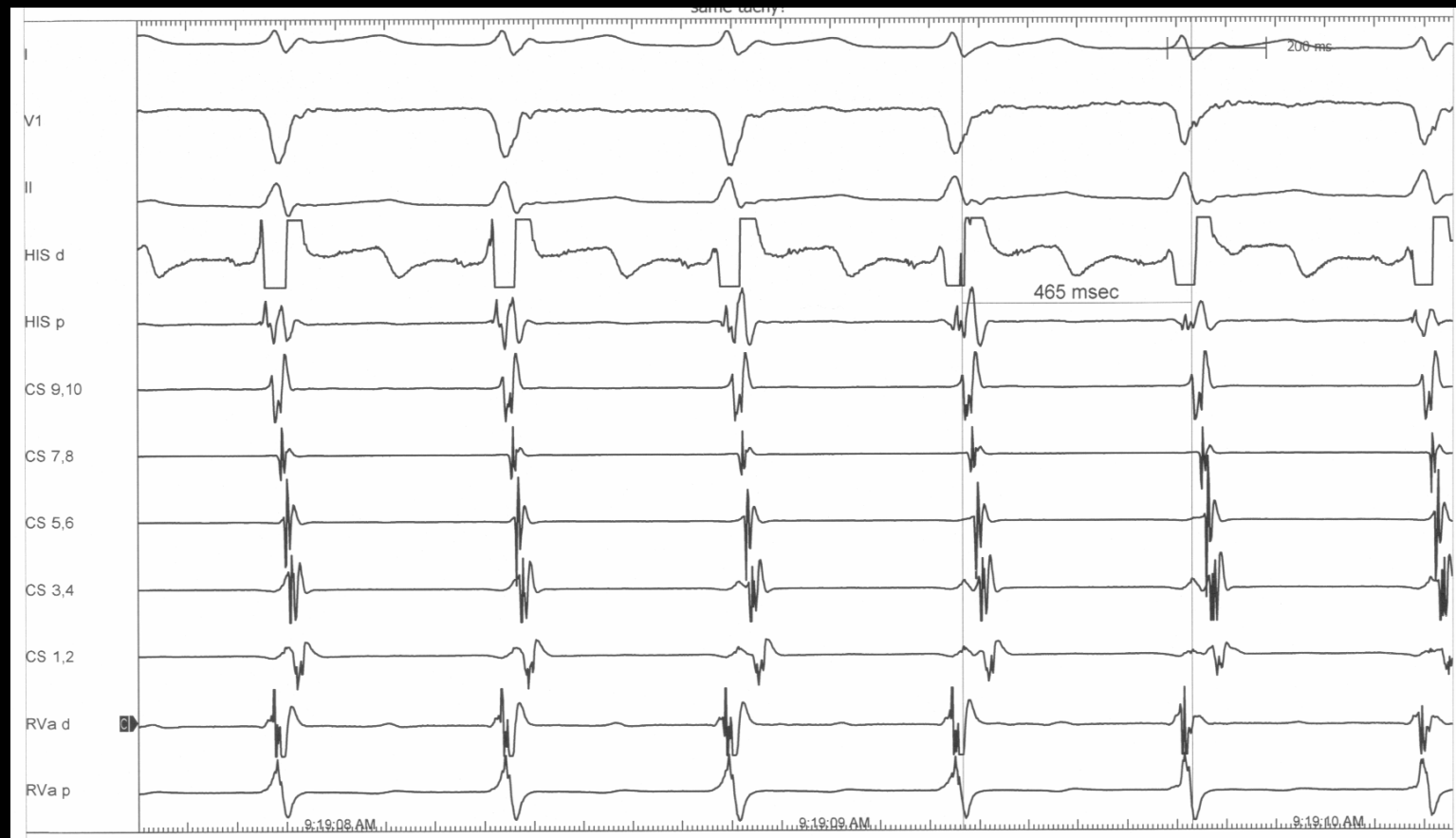
Initiation of SVT with V pacing – with VAAV? >>>AT?

SVT after Initiation



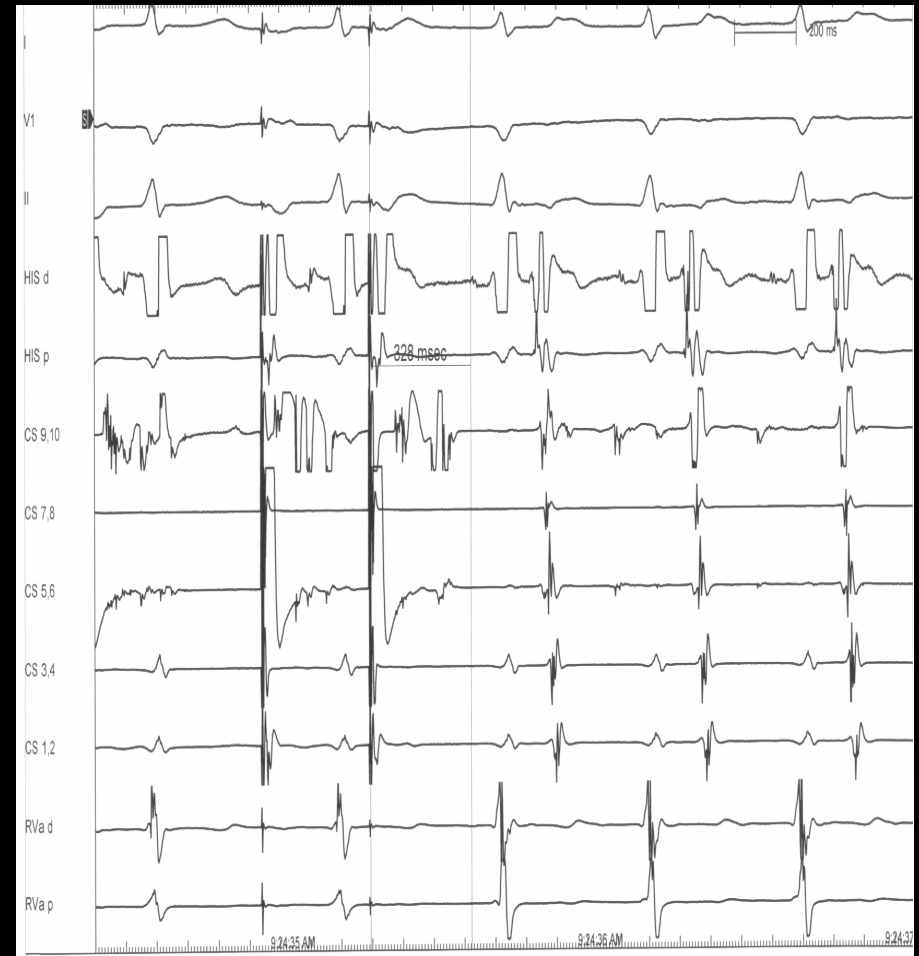
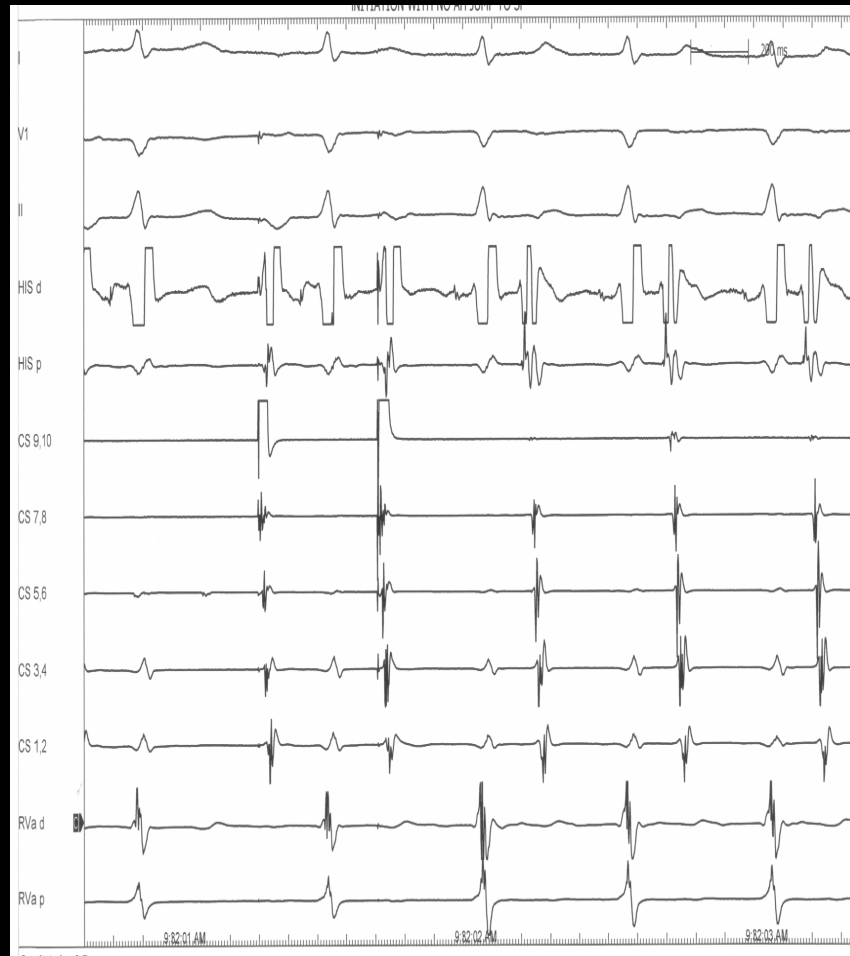
What is the diagnosis of SVT?

SVT after Initiation



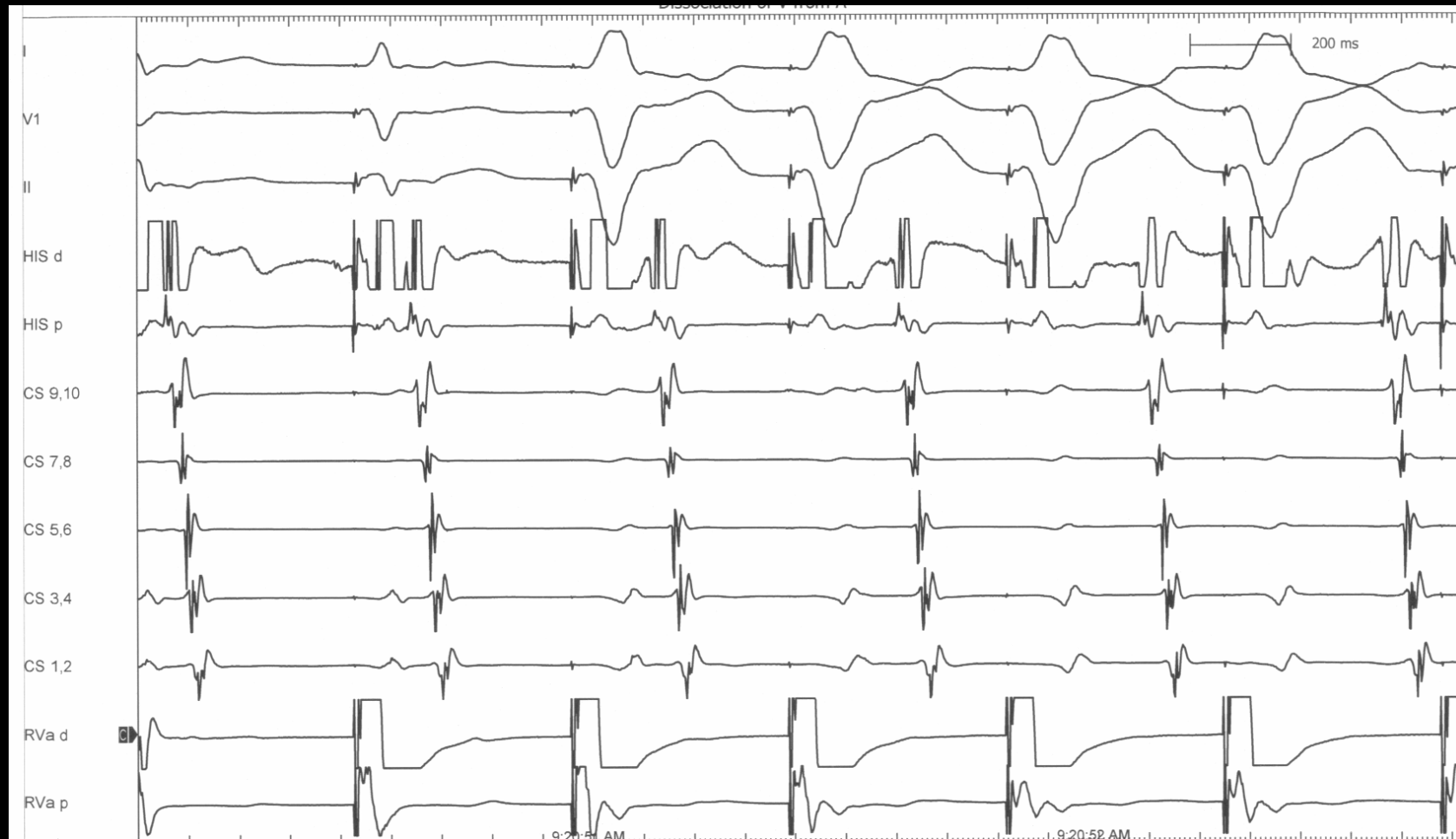
AND NOW?

Initiation from A



Initiation with no AH Jump and with different AH delays

V pacing during SVT



Dissociation of V from A during SVT

Diagnosis

- AT
 - VAAV during initiation
 - Dissociation of V from A
 - No AH delay necessary
 - AA drives HH when cycle length changes
 - VA variable

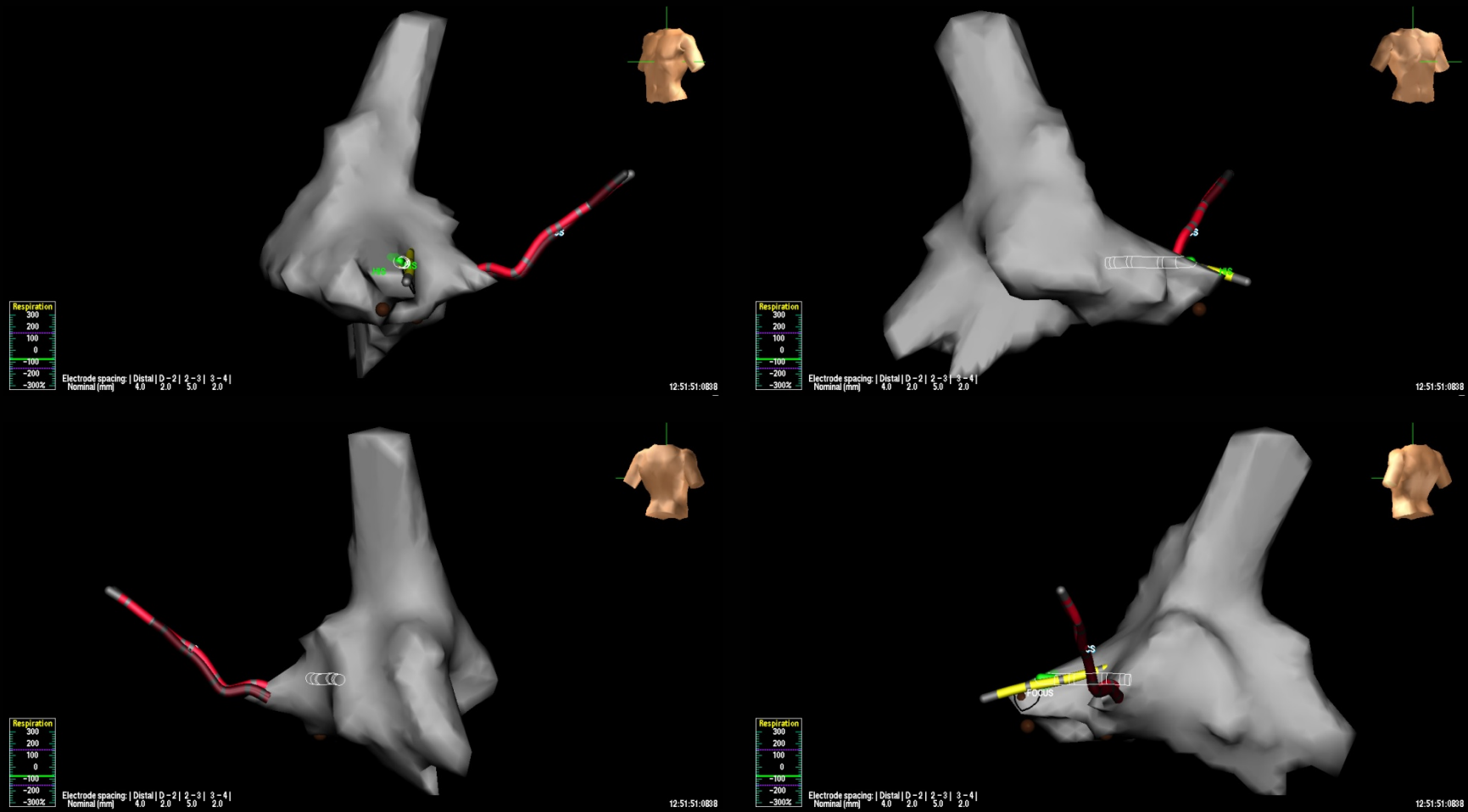
ECG-AT



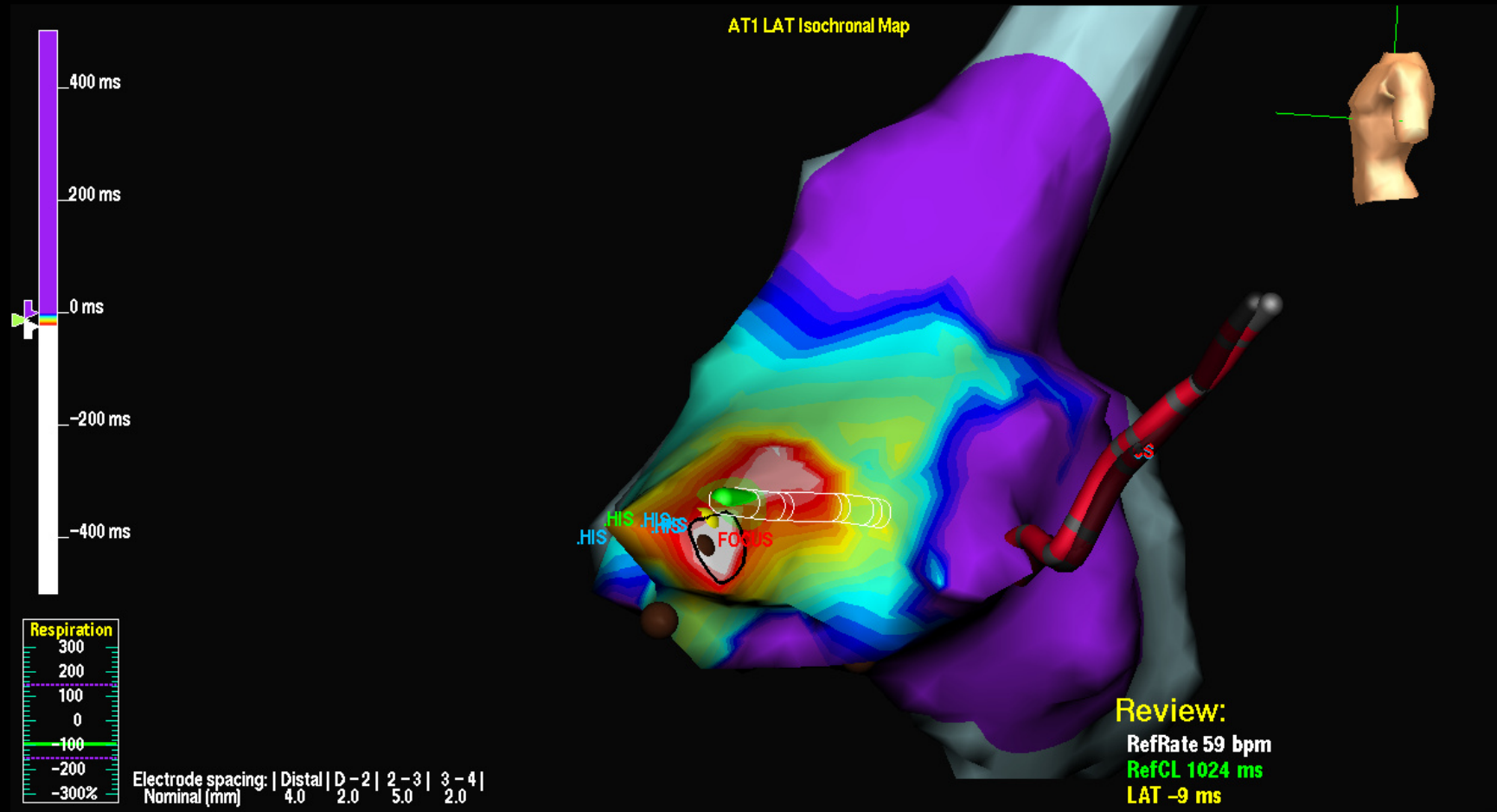
Mapping

- Mapping with Roving Catheter- mapped to Peri-nodal Region
- Failed Ablation
- Decide to Bring again for Cryo Ablation

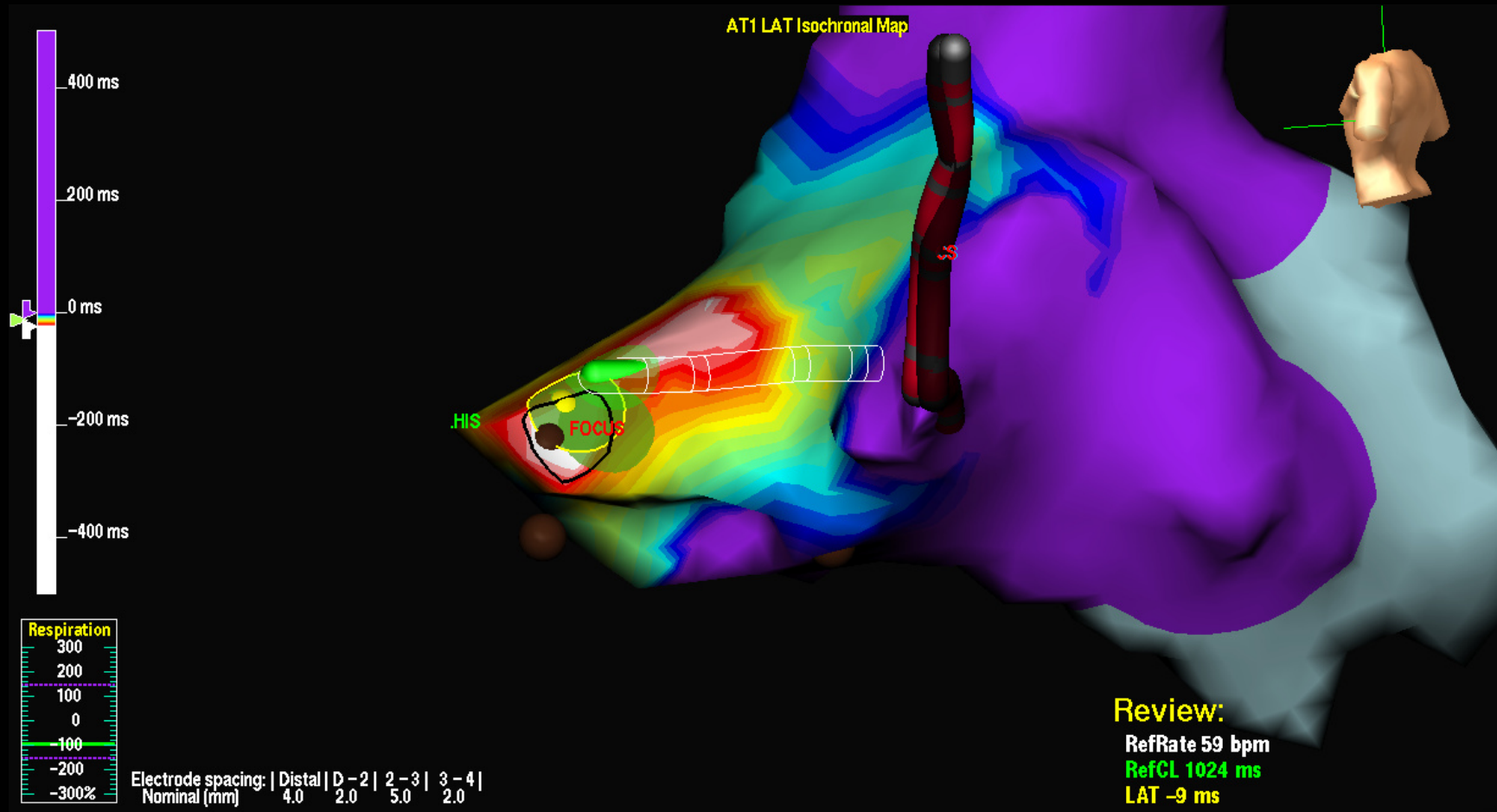
Reinduction – 3D EA Mapping



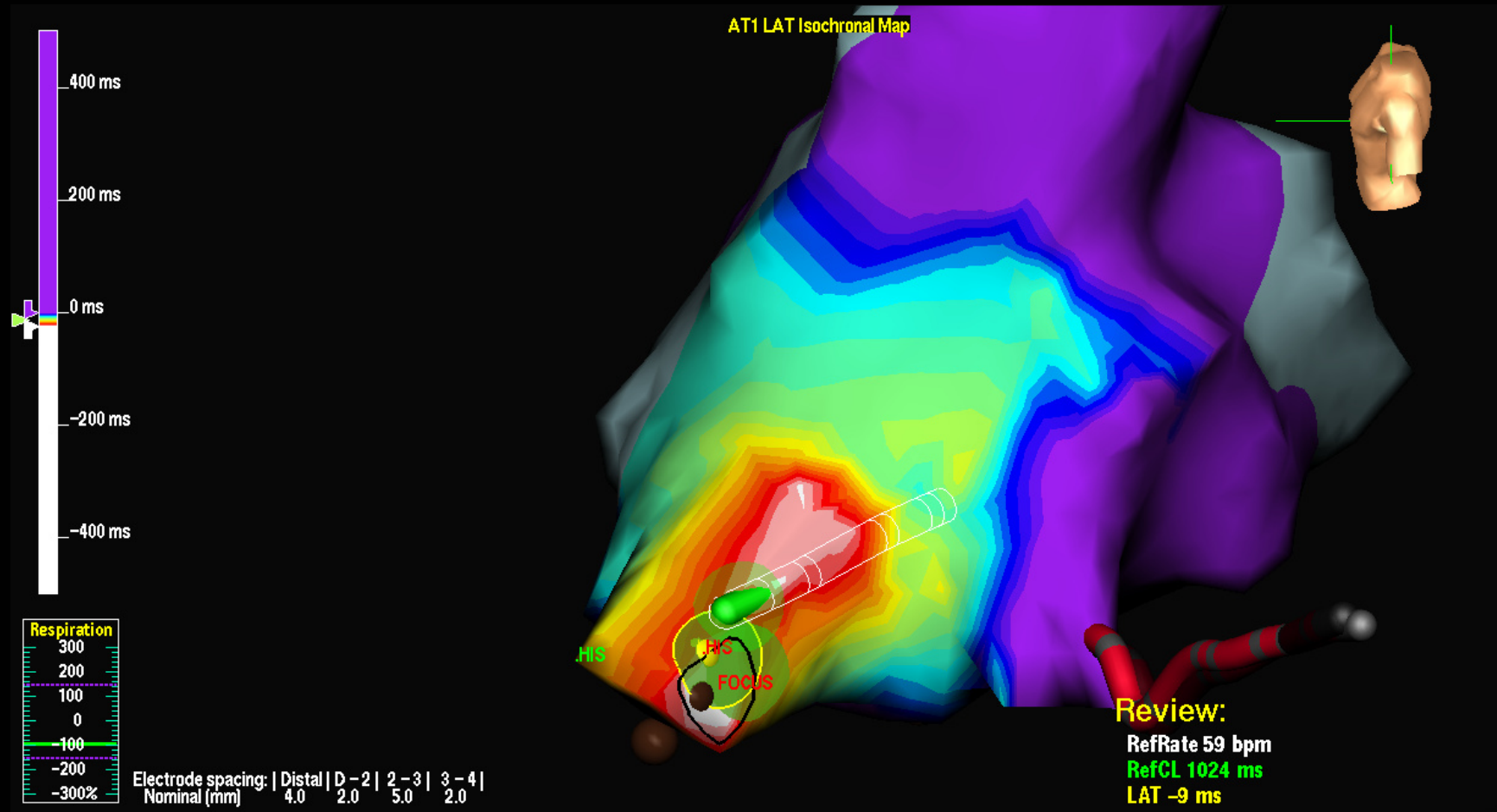
Activation Map



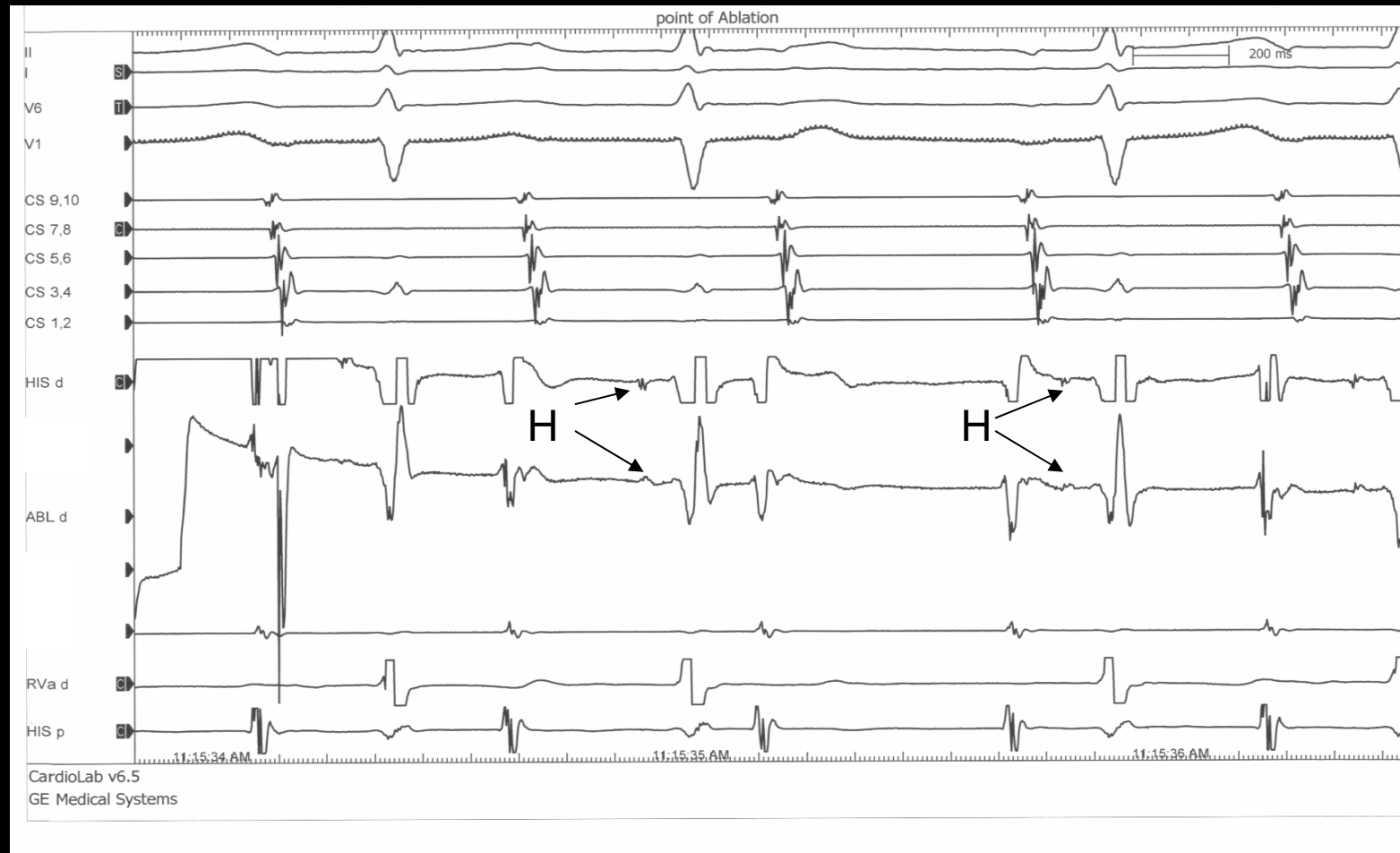
Activation Map



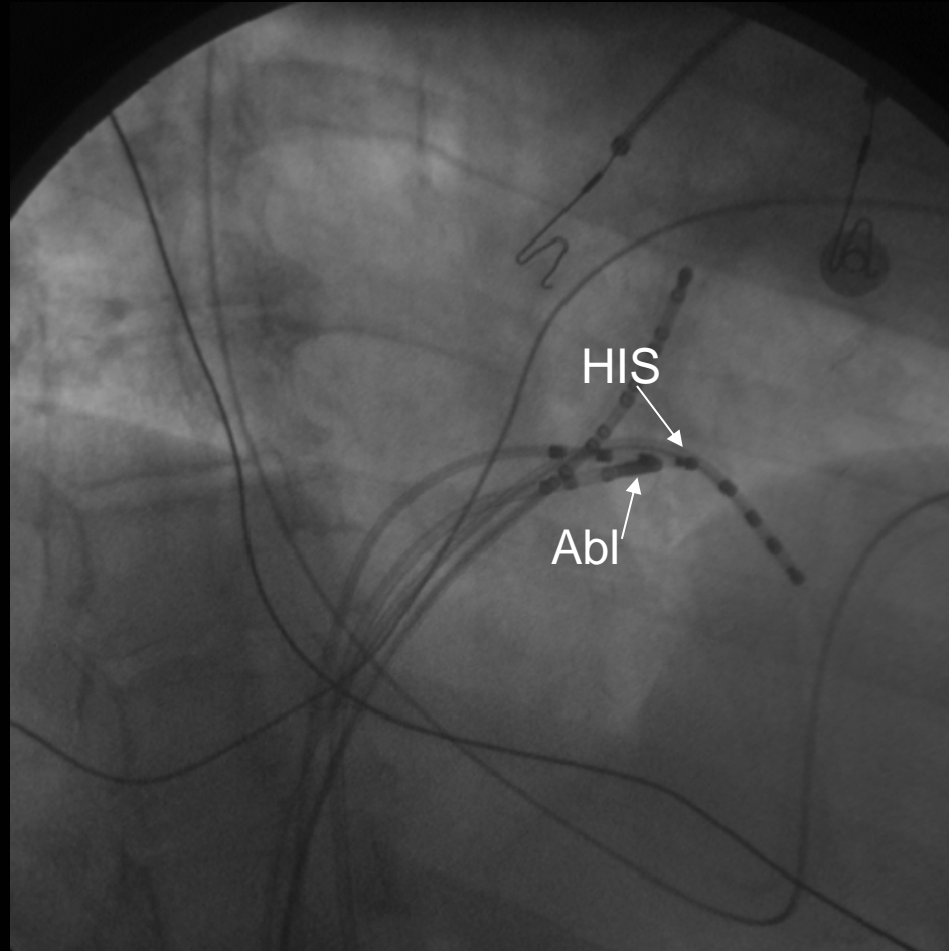
Activation Map



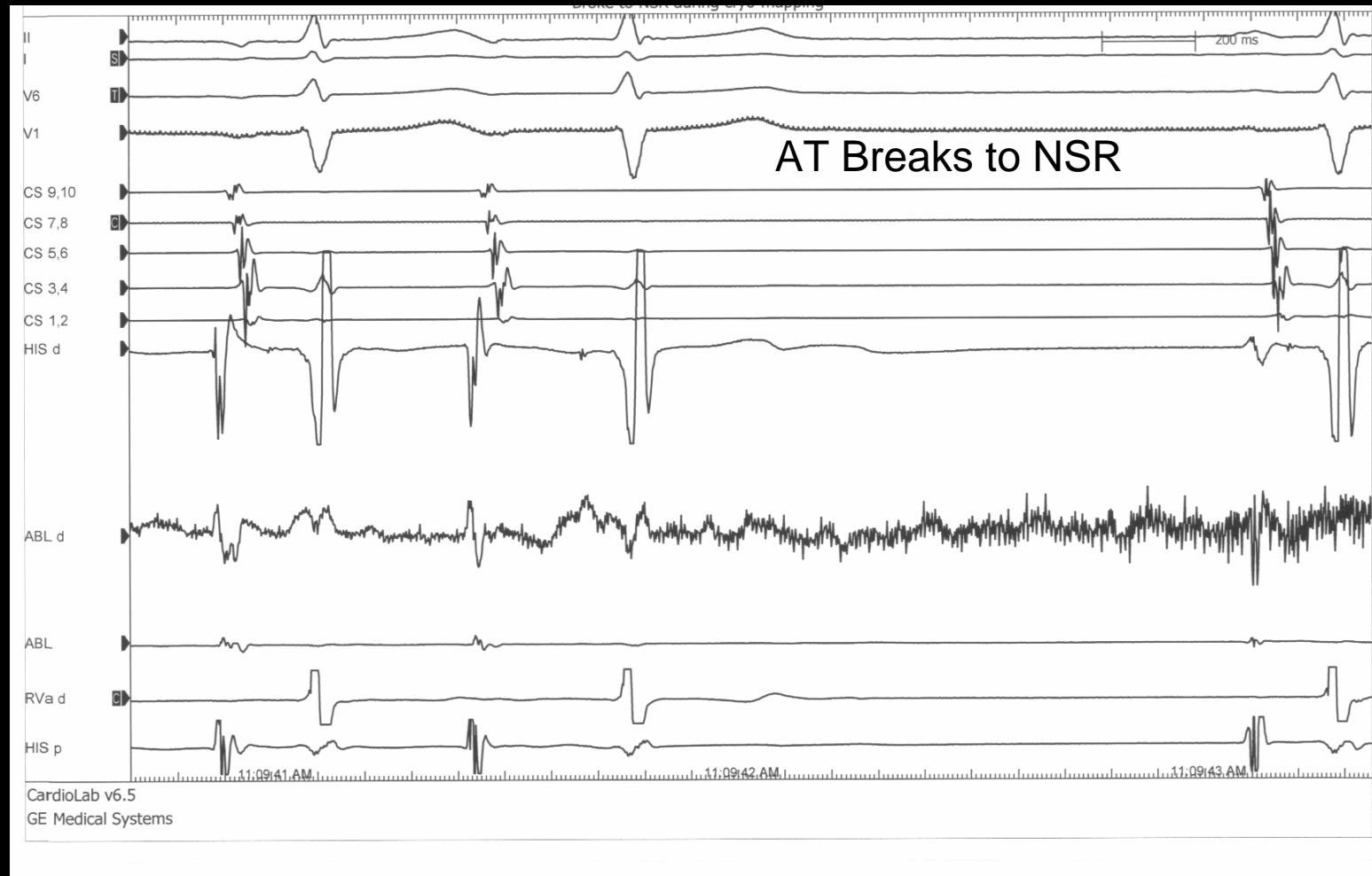
EGM at Ablation Site



Catheter at Ablation Site



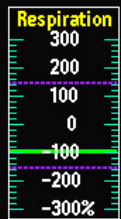
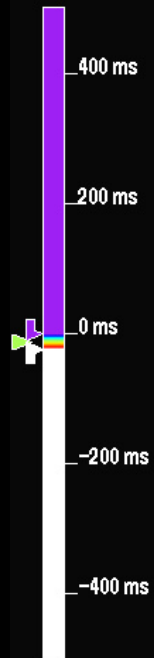
Cryo-Mapping to -30 Celsius



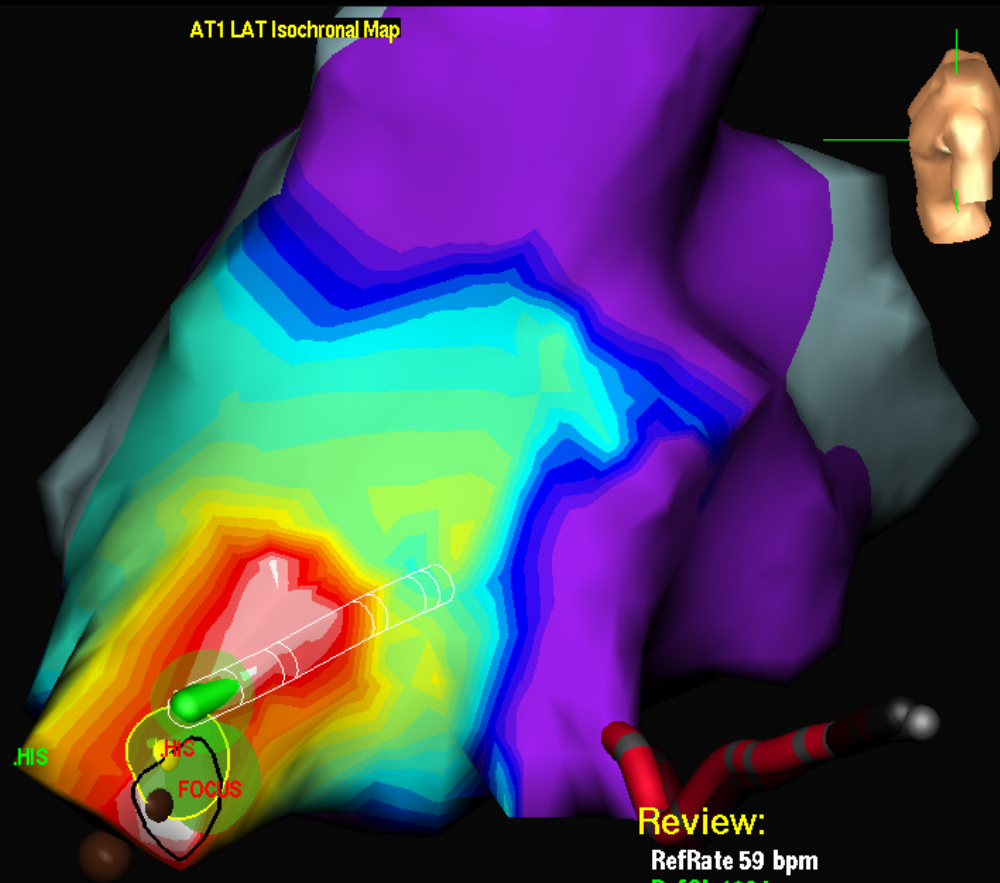
After CryoAblation at -70 Celsius

- AT no longer Inducible
- No Impairment to A-V Conduction

AT1 LAT Isochronal Map



Electrode spacing: | Distal | D-2 | 2-3 | 3-4 |
Nominal (mm) 4.0 2.0 5.0 2.0



Review:

RefRate 59 bpm

RefCL 1024 ms

LAT -9 ms